



**2 Chesterfield Road**  
Rowsley, Matlock, DE4 2EG

£325,000



## 2 Chesterfield Road

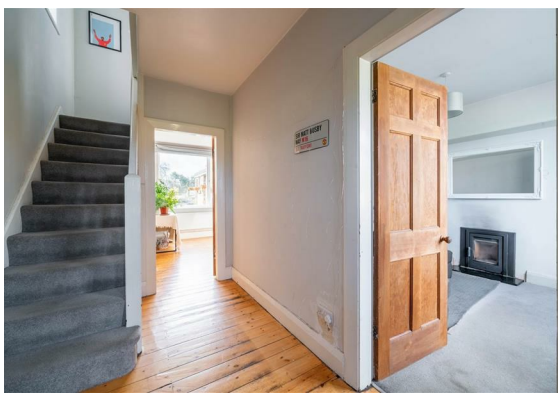
Rowsley, Matlock, DE4 2EG

Nestled in the charming village of Rowsley, is this delightful 3 bedroom semi detached property offering a perfect blend of comfort and convenience. Featuring 937 sqft of living accommodation, the property boasts panoramic views of the surrounding countryside, a low maintenance rear garden and off street parking.

The ground floor comprises; Entrance hallway with original flooring, front aspect living room with log burning stove, downstairs WC, formal dining room with second log burning stove, open to the kitchen with quarry tiled flooring and access onto the rear garden.

The first floor comprises; Three double bedrooms and main family bathroom.

**Dales and Peaks ForwardMove**  
- Please read

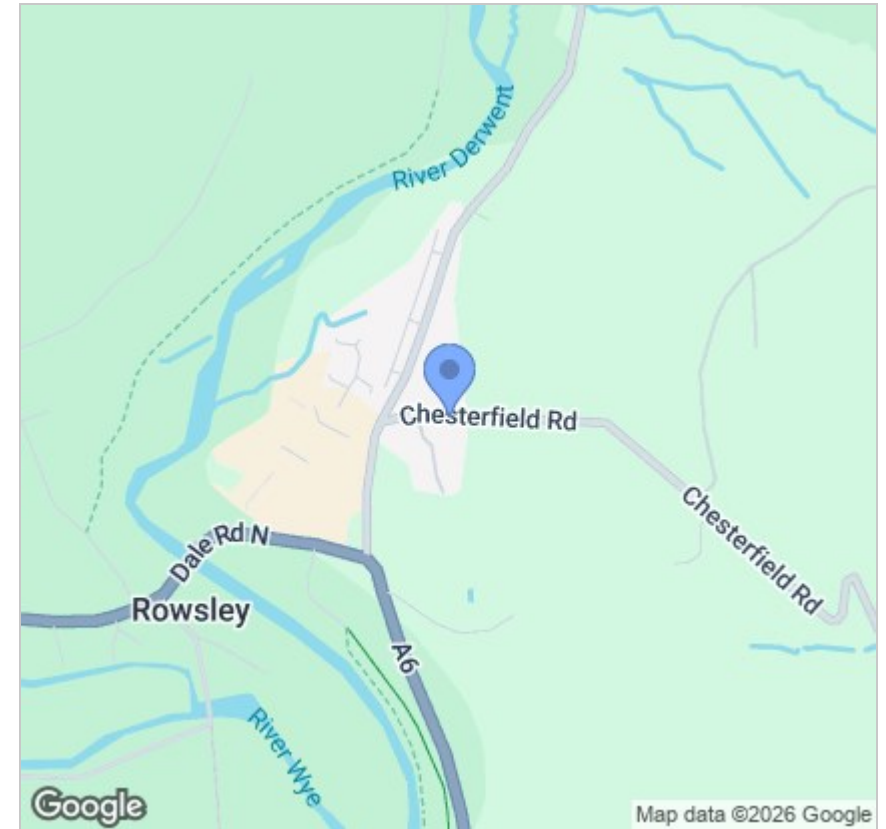




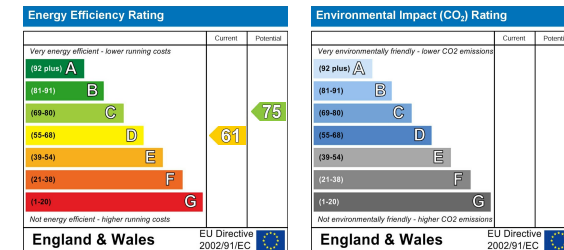
## Floor Plan



## Area Map



## Energy Efficiency Graph



## Viewing

Please contact our Chesterfield Office on 01246 567540 if you wish to arrange a viewing appointment for this property or require further information.

These particulars, whilst believed to be accurate are set out as a general outline only for guidance and do not constitute any part of an offer or contract. Intending purchasers should not rely on them as statements of representation of fact, but must satisfy themselves by inspection or otherwise as to their accuracy. No person in this firm's employment has the authority to make or give any representation or warranty in respect of the property.



131 Chatsworth Road, Chesterfield, Derbyshire, S40 2AP  
 T: 01246 567540

E: info@dalesandpeaks.co.uk  
 www.dalesandpeaks.co.uk