



## 53 Henton Road , Leicester, LE3 6AY £249,995

Seeing is believing with this impressive Victorian three-storey home, offering exceptional space and a high standard of accommodation throughout. Ideally positioned within walking distance of local facilities and only a short drive from Leicester City Centre, the main railway station and DMU, the property combines convenience with classic period charm.

The well-planned layout comprises a welcoming entrance hall, elegant sitting room, separate dining room, and a modern kitchen fitted with an extensive range of units and integrated appliances, together with a utility room/WC.

To the first floor are two generous double bedrooms and a stylish family bathroom. Between the rear bedroom and the bathroom is an additional versatile space, currently arranged as a home office but equally suitable as a dressing area or additional storage.

The second floor hosts a further spacious double bedroom complete with en-suite facilities, creating an ideal private retreat.

Outside, the property enjoys a lawned rear garden, making it an excellent choice for a young or

### Viewing

Please contact our Berkley Kibworth Office on 0116 2796161 if you wish to arrange a viewing appointment for this property or require further information.



3



0



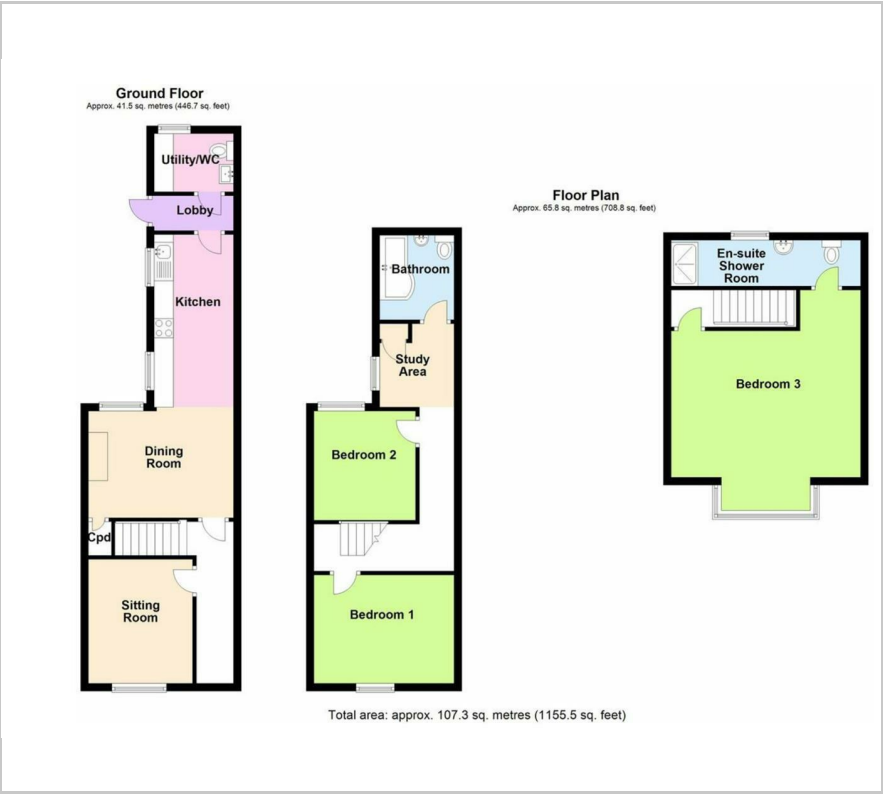
0



D



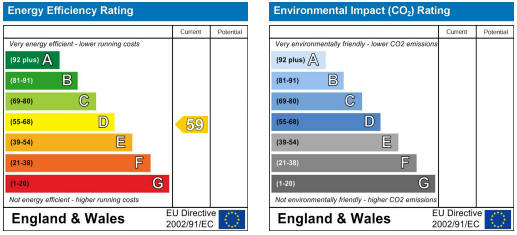
Floor Plan



Area Map



Energy Efficiency Graph



These particulars, whilst believed to be accurate are set out as a general outline only for guidance and do not constitute any part of an offer or contract. Intending purchasers should not rely on them as statements of representation of fact, but must satisfy themselves by inspection or otherwise as to their accuracy. No person in this firms employment has the authority to make or give any representation or warranty in respect of the property.