






KENSINGTON CHURCH COURT LONDON W8
£3,850 PER MONTH AVAILABLE 01/04/2026

Hamptons
THE HOME EXPERTS

{ THE PARTICULARS

Kensington Church Court London
W8

£3,850 Per Month
Unfurnished

 2 Bedrooms
 2 Bathrooms
 1 Reception

Features

- Recently Refurbished, - Duplex, - Two Bedrooms, - Two Bathrooms, - Two Terraces, - Lift, - Central Kensington location

Council Tax

Council Tax Band G

Hamptons
8 Hornton Street
Kensington, London, W8 4NW
020 7937 9372
KensingtonLettings@hamptons.co.uk
www.hamptons.co.uk

{ A TWO BEDROOM DUPLEX APARTMENT WITH TWO TERRACES

The Property

A bright recently refurbished two bedroom two bathroom split level apartment, well located on Kensington High Street. The apartment is entered on the third floor offering a good size bedroom with direct access to a lovely terrace and bathroom. Stairs lead up to a spacious open plan kitchen reception room with access out too a second terrace. There is a further good size bedroom with en-suite bathroom and also access to the terrace. Offered unfurnished.

Location

Kensington Church Court is located moments from the boutique shops of Kensington Church Street and the many amenities of Kensington High Street, including the District and Circle lines.



KENSINGTON CHURCH COURT

Approximate Gross Internal Area (excluding reduced headroom)

Third floor = 307 sq. ft. (28.5 sq. m.)

Fourth floor = 470 sq. ft. (43.7 sq. m.)

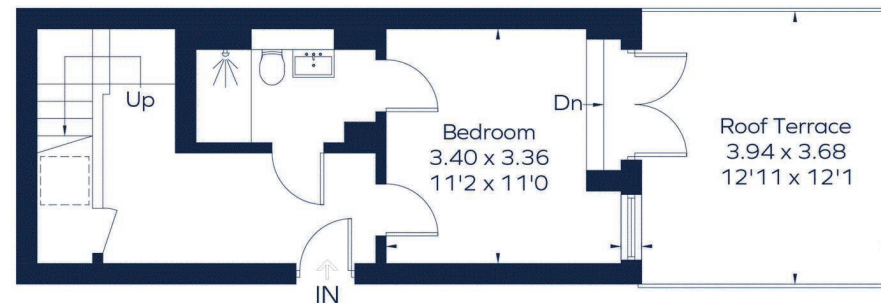
Reduced Headroom = 5 sq. ft. (0.5 sq. m.)

Total = 782 sq. ft. (72.7 sq. m.)



Fourth Floor

= Reduced head height below 1.5m



Third Floor

This plan is for layout guidance only. Not drawn to scale unless stated. Windows and door openings are approximate. Whilst every care is taken in the preparation of this plan, please check all dimensions, shapes and compass bearings before making any decisions reliant upon them.
ID 1116101

For Clarification

We wish to inform prospective tenants that we have prepared these particulars as a general guide and they have been confirmed as accurate by the landlord. We have not verified permissions, nor carried out a survey, tested the services, appliances and specific fittings. Room sizes are approximate and measurement figures rounded: they are taken between internal wall surfaces and therefore include cupboards/shelves, etc. Accordingly, they should not be relied upon for

carpets and furnishings. It should also be noted that all fixtures and fittings, carpeted, curtains/blinds, kitchen equipment and garden statuary, whether fitted or not, are deemed removable by the landlord unless specifically itemised with these particulars. Please enquire in office or on our website for details on holding deposit and tenancy deposit figures.

