

17 Heron Close - Guide Price £210,000

Stowmarket IP14 1UR

shires

Estate & Letting Agents



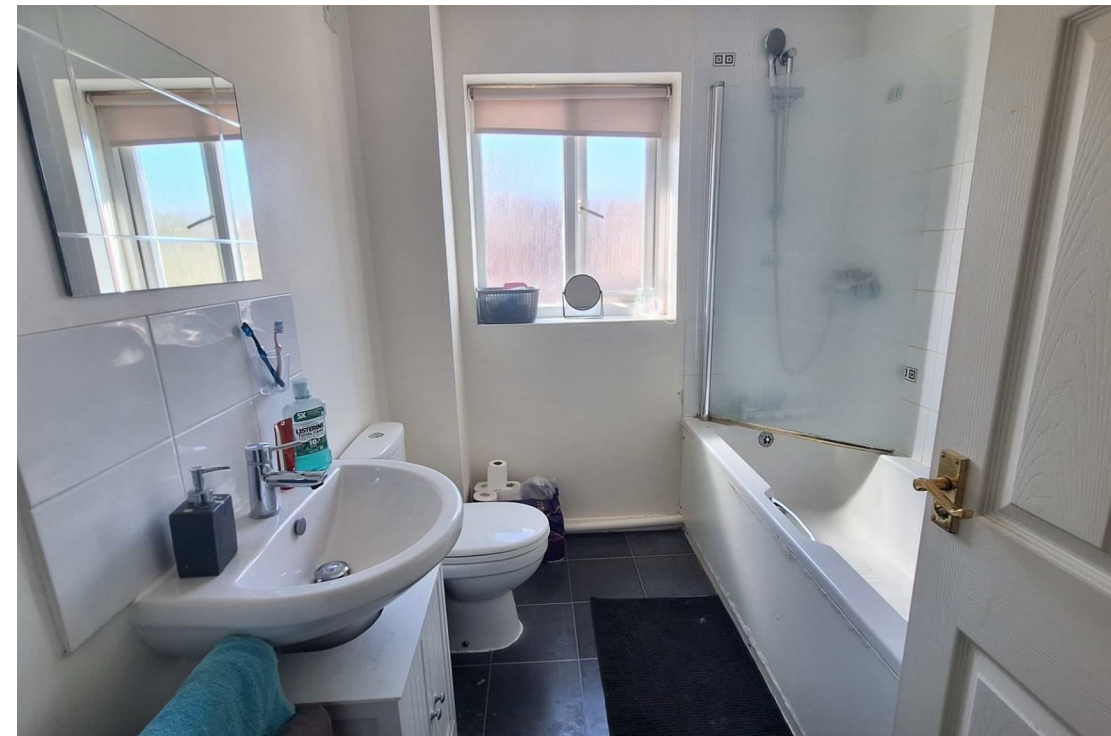
"Consistently providing outstanding service to our clients"

Features

- MODERN END OF TERRACE HOUSE
- POPULAR BURFORD REACH DEVELOPMENT
- HALL, CLOAKROOM, SITTING ROOM
- KITCHEN
- TWO DOUBLE BEDROOMS & BATHROOM
- GARDEN AND PARKING SPACE
- GAS FIRED CENTRAL HEATING
- CLOSE TO LOCAL SHOPS AND SCHOOLS

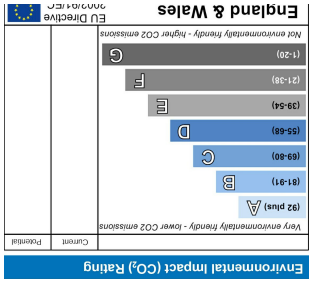
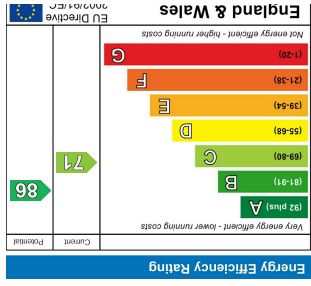
The Property

Set on the popular Burford Reach development to the western outskirts of Stowmarket, this modern two bedroom end of terrace house offers accommodation including Entrance Hall, Cloakroom, Kitchen, Sitting Room, Two Double Bedrooms and Bathroom. Further benefits include gas fired central heating, double glazing and an enclosed rear garden and car parking space. The property is situated within walking distance of the Leisure Centre, local shops, schools and within a mile of Stowmarket town centre.





These sales particulars have been produced as a general guide only and we would draw to your attention that we have not carried out a detailed Survey of the property nor have we tested services, appliances or specific fittings. Whilst measurements and statements given within the details are provided in good faith, their accuracy should not be relied upon. If there are any points about which you may be uncertain or would like further clarification, we would suggest that you telephone this office and speak to our staff who will endeavour to assist you.



While every attempt has been made to ensure the accuracy of the description contained herein, measurements of doors, windows, rooms and any other items are approximate and no responsibility is taken for any error, omission or mis-statement. This plan is for illustrative purposes only and should be used as such by any prospective purchaser. The services, systems and appliances shown have not been tested and no guarantee as to their operability or efficiency can be given.

Made with Metropack ©2025

