



Salisbury House  
Bessborough Gardens, SW1V

Asking Price £700,000

CHESTERTONS





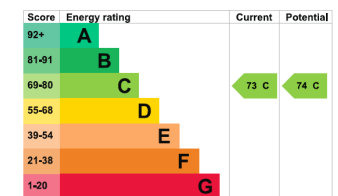
This spacious one-bedroom apartment within the sought-after gated development of Bessborough Gardens offers an excellent opportunity to acquire a well-proportioned home in the heart of Pimlico. The property further benefits from private parking, porter service, share of freehold, and no onward chain.

The accommodation comprises a generously sized reception room with high ceilings and three large windows, allowing an abundance of natural light throughout. There is a spacious double bedroom with built-in storage, a family bathroom and additional integrated storage cupboards, providing excellent practicality.

Further benefits include secure underground parking and a 24-hour concierge service, offering both convenience and security.

Bessborough Gardens is ideally positioned for access to Pimlico Underground Station (Victoria Line), the River Thames, and the extensive shopping, dining, and cultural amenities of Pimlico and Westminster.

- Located within gated development of Bessborough Gardens
- Bright and generously proportioned reception room with high ceilings and three large windows
- Large double bedroom with built-in storage, plus additional integrated storage cupboards throughout
- Benefits include secure underground parking, 24-hour concierge/porter service, share of freehold, lift access.
- Ideally located close to Pimlico Underground Station (Victoria Line)
- No onward chain.



**Tenure:** Share of Freehold – 1,000 years from 31 October 1986  
**Service Charge:** £5,980 Annually (Including £2,748 Reserve Fund)  
**Ground Rent:** No Ground Rent  
**Local Authority:** Westminster  
**Council Tax Band:** F

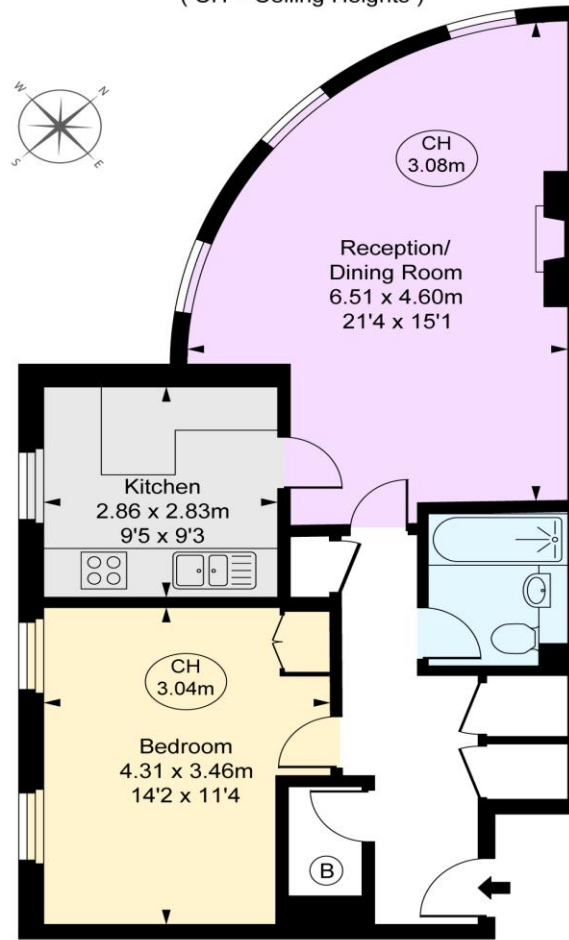
*Chestertons Westminster & Pimlico Sales*

105 Wilton Road  
 London  
 SW1V 1DZ  
 westminster@chestertons.co.uk  
 020 3040 8201  
 chestertons.co.uk

Salisbury House,  
Bessborough Gardens, SW1V

Approximate Gross Internal Area  
62.65 sq m / 674 sq ft

( CH = Ceiling Heights )



First Floor



This plan is not to a given scale. A detailed layout plan to scale for valuation is available on request. All measurements and areas are within 1% tolerance and have been prepared in accordance with industry standards as defined in the RICS Code of Measuring Practice  
© Fulham Performance

Chesterton UK Services Limited trading as Chestertons for themselves and for the vendor of this property whose agents they are, give notice that (i) these particulars do not constitute any part of an offer or contract, (ii) all statements contained within these particulars are made without responsibility on the part of Chestertons or the vendor, (iii) whilst made in good faith, none of the statements contained within these particulars are to be relied upon as a statement or representation of fact, (iv) any intending purchasers must satisfy themselves by inspection or otherwise as to the correctness of each of the statements contained within these particulars, (v) the vendor does not make or give either Chestertons or any person in their employment any authority to make or give representation or warranty whatsoever in relation to this property. Wide angle lenses may be used. ©Copyright Chestertons | Chesterton UK Services Limited | Registered Office 5th Floor, The Lantern, 75 Hampstead Road, London, NW1 2PL Registered Company Number 05334580.



This paper is  
100% recyclable