



## CHEYNE WALK, SW10

£3,461 per week

Grade II listed Georgian townhouse

Double reception

River views

Private Garden

Double bedrooms

Open Plan dining kitchen

@marshandparsons  
marshandparsons.co.uk

MARSH &  
PARSONS



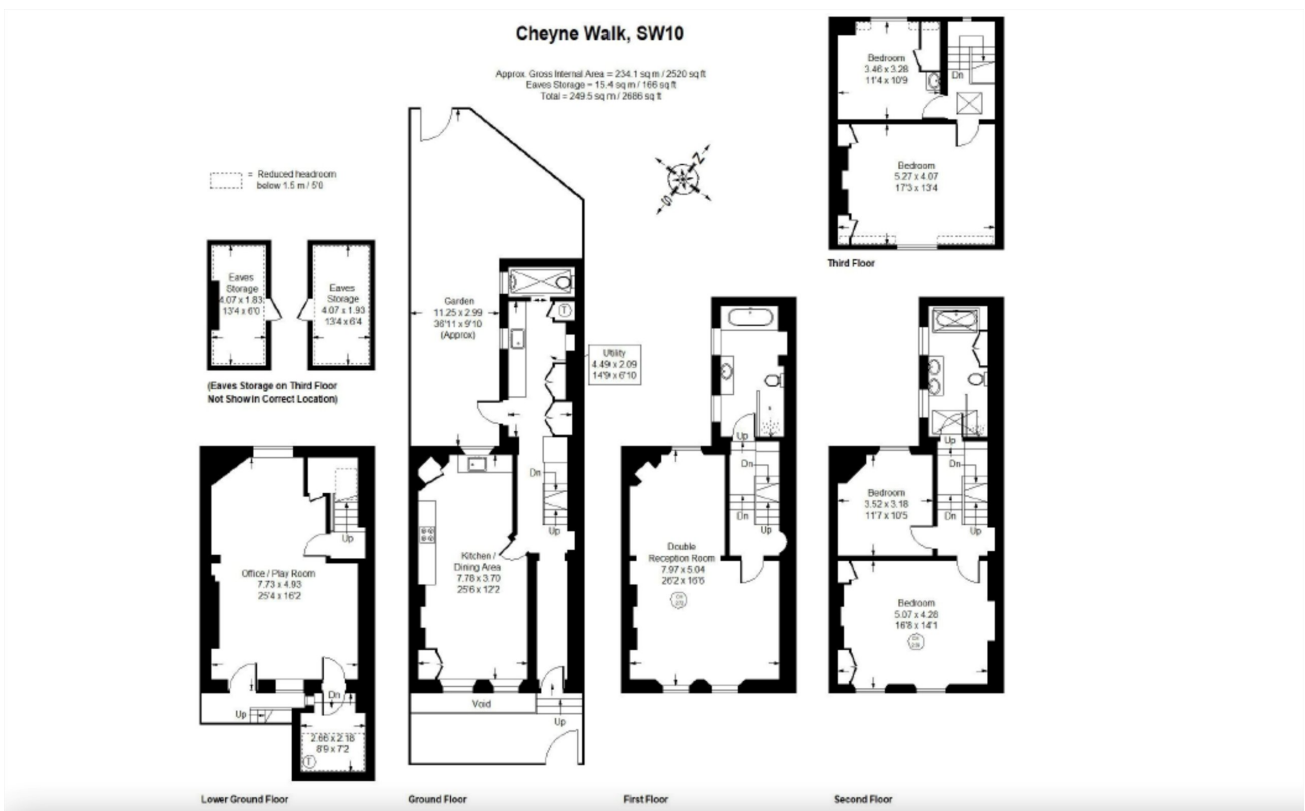
# ABOUT THE PROPERTY

A beautifully presented four-bedroom Georgian house with a garden and stunning river views, nestled in the heart of Chelsea.

Located on Cheyne Walk, a distinguished terrace of Georgian townhouses set back from Chelsea Embankment, the property is perfectly positioned within easy reach of the vibrant shops, cafés, and restaurants of King's Road. The local underground station can be found at Sloane Square (District and Circle lines).



# STEP INSIDE CHEYNE WALK



**Chelsea**  
020 7591 5570

Energy Rating: E We aim to make our particulars both accurate and reliable. However, they are not guaranteed; nor do they form part of an offer or contract. If you require clarification on any points then please contact us, especially if you're traveling some distance to view. Please note that appliances and heating systems have not been tested and therefore no warranties can be given as to their good working order

**MARSH &  
PARSONS**