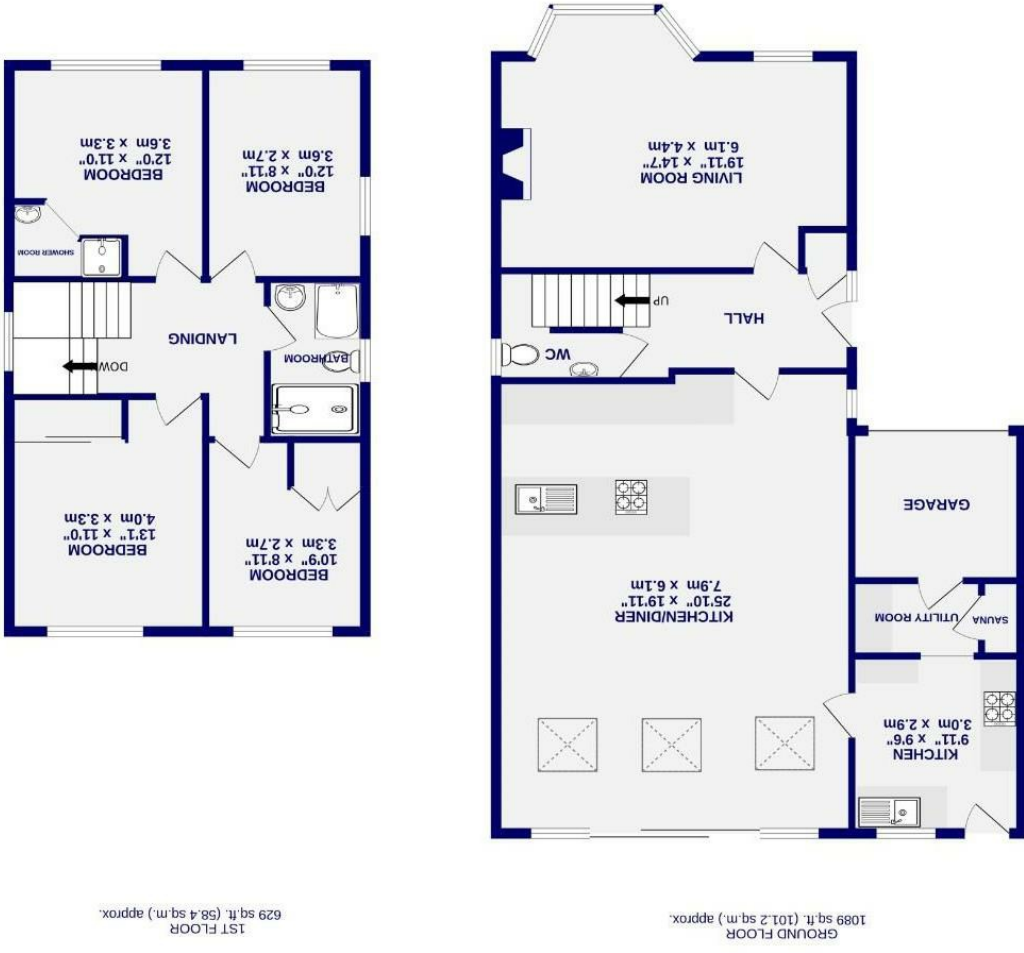


These particulars have been prepared as accurately and as reliably as possible, but should not be relied upon as 'statement of fact'. If there is any point which is of particular importance to you, please contact the office and we would be pleased to check the information. We have not tested any services, appliances, equipment or facilities and nothing in these particulars should be deemed to be a statement that they are in good working order, or that the property is in good structural condition or otherwise. Any statements contained in these particulars referred to are given as a guide only and are not precise. Purchasers must satisfy themselves by inspection or by otherwise regarding the items mentioned above and as to the correctness of each of the areas, measurements, floor plans or distances referred to. No person in the employment of Ashtons has any authority to make or give any representation or warranty whatsoever in relation to this property or these particulars nor enter into any contract relating to the property on behalf of the vendor.

- Beautifully Presented Four Bedroom Home
- Located Just Outside Of York
- Skillfully Extended
- Large Driveway And Plot
- Internal Sauna Room
- Family Bathroom & En-Suite Shower Room
- Great Transport Links
- Electric Vehicle Charge Point
- Internal Air Conditioning Unit
- EPC - D

Freehold
Council Tax Band - E

Park Close Skelton, York YO30 1YY



Park Close
Skelton, York
YO30 1YY

Offers Over £550,000



Nestled in the picturesque village of Skelton, this beautifully presented four-bedroom detached home offers the perfect balance of tranquil village living and exceptional convenience. Positioned just to the north of the ring road, the property provides easy access to Clifton Moor Retail Park, is only a short drive from York city centre, and offers excellent northbound links towards Shipton-by-Beningborough and Thirsk.

Internally, the home has been finished to an exceptional standard, blending style, comfort, and practicality throughout. To the front elevation, a generous lounge provides a welcoming retreat, complete with a charming log-burner - perfect for cosy evenings. To the rear, the property has been thoughtfully extended to create an impressive and expansive family room, ideal for modern living and entertaining. This stunning space flows seamlessly into a fully equipped kitchen, designed with both functionality and style in mind.

The extended accommodation further benefits from a second kitchen, a separate utility room, and a luxurious downstairs sauna - creating a unique and versatile living arrangement. A distinctively designed ground floor WC adds a further touch of character to this remarkable home.

Upstairs, the property continues to impress with four well-proportioned bedrooms. Two generously sized smaller bedrooms comfortably accommodate double beds, while the two larger bedrooms offer enhanced space and flexibility. The principal bedroom enjoys the added luxury of an en-suite shower room, while the second larger bedroom boasts an even more expansive floor area. Completing the first floor is a stunning family bathroom featuring a four-piece suite, highlighted by an indulgent Japanese soaking bath - a true spa-like sanctuary.

