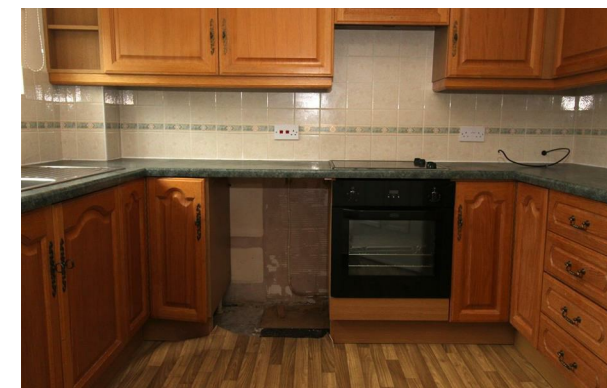


KE



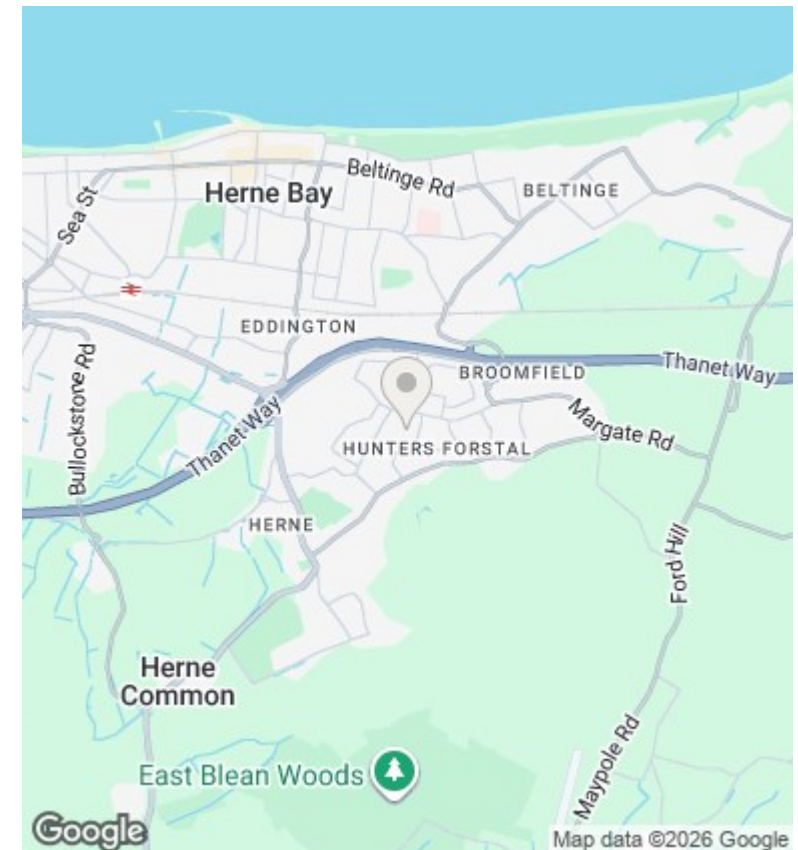
17 Rockingham Place, Herne Bay, CT6 7UH

£1,500 Per Month

- Popular Location In Broomfield
- Two Bathrooms
- Three Bedroom Detached House
- Spacious Lounge/Diner
- Garage & Driveway
- Beautiful Rear Garden

106 High Street, Kent, CT6 5LE
01227 389998

lettings@kimberestates.co.uk
www.kimberestates.co.uk



Viewings

Viewings by arrangement only. Call 01227 389998 to make an appointment.

Council Tax Band

D

EPC Rating:

C

Energy Efficiency Rating		
	Current	Potential
<i>Very energy efficient - lower running costs</i>		
(92 plus) A		
(81-91) B		
(69-80) C	71	78
(55-68) D		
(39-54) E		
(21-38) F		
(1-20) G		
<i>Not energy efficient - higher running costs</i>		
England & Wales	EU Directive 2002/91/EC	