



Old Spade Forge, Lowick Green

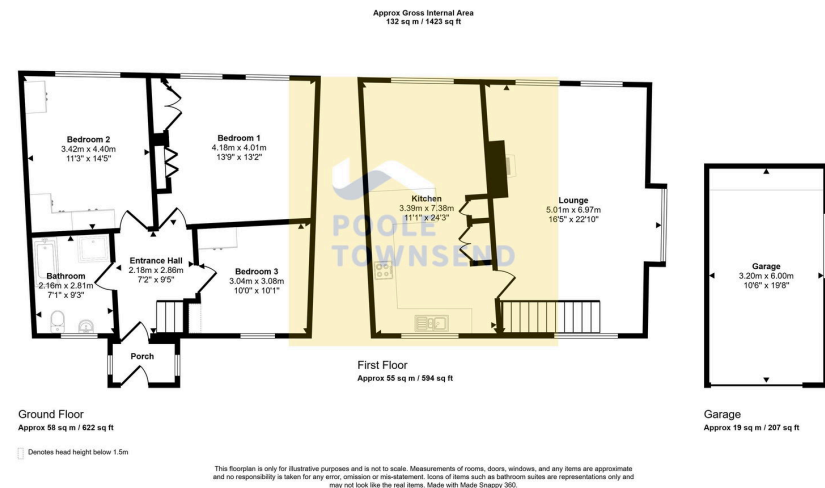
£350,000

3 1 1

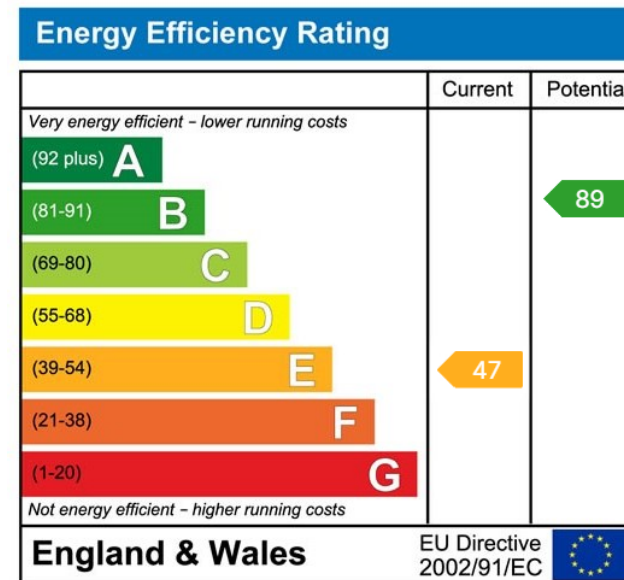


- Charming home in the Lake District National Park
- Spacious light and bright living area
- Modern kitchen/diner
- 3 bedrooms
- Attractive gardens including roof terrace
- Suited to a range of buyers
- Sought after location
- Garage and extensive parking
- No upper chain
- Freehold and council tax band E





This charming three-bedroom home, situated in Lowick Green and only a short distance to the picturesque shores of Coniston Water, offers an ideal opportunity for a variety of buyers. Coniston village is nine miles away and the charming market town of Ulverston is less than five miles, providing convenient access to local amenities. The distinctive inverted accommodation features three bedrooms and a four-piece bathroom on the ground floor, while the first floor boasts a multi-aspect lounge and an impressively sized kitchen/dining room with a breakfast bar. Further benefits include LPG central heating, double glazing, a larger-than-average garage with a roof terrace above, and a raised garden. This property is offered with no upper chain.



Visit us at
www.pooletownsend.co.uk
enquiries@pooletownsend.co.uk

We are open
 Monday – Friday 9.00 – 5.00
 Saturday 9.00 – 1.00

Barrow 01229 811811
 Ulverston 01229 588111
 Grange 015395 33316
 Kendal 01539 734455
 Milnthorpe 015395 62044