





Property Summary

A bright and well- proportioned two bedroom, two bathroom apartment in the popular Rivoli Apartments development, moments from Ladywell Station. The property features a generous open- plan living space with Juliet balcony overlooking landscaped communal gardens, two double bedrooms with built- in wardrobes, an en- suite to the main bedroom and a modern family bathroom. Set in the heart of Ladywell Village with independent cafés, shops and green spaces on the doorstep, including Ladywell Fields and Hilly Fields. Long lease and secure entry. 'Right to Manage'.

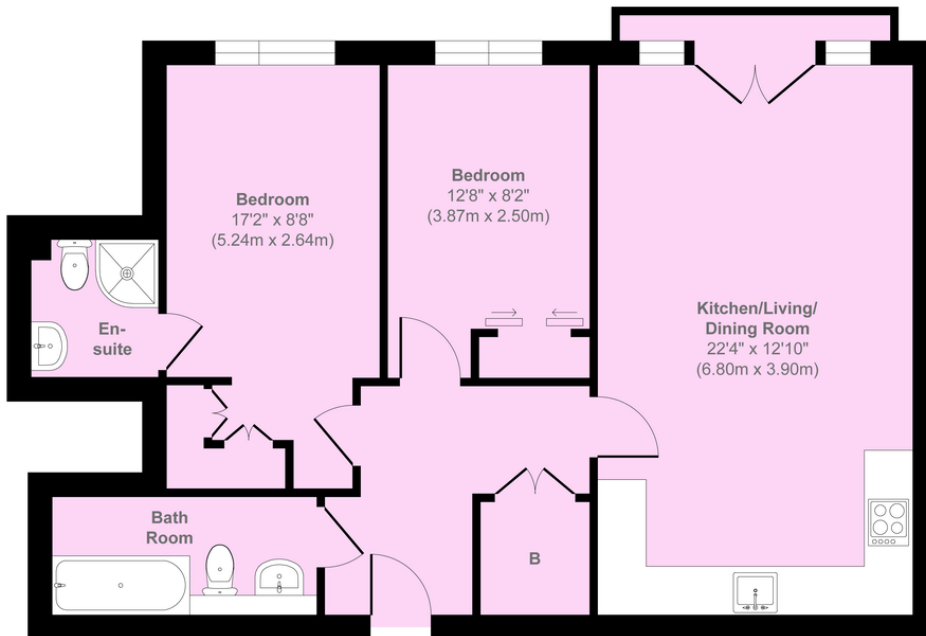
Property Features

- Two double bedrooms with built- in wardrobes
- Two modern bathrooms including an en- suite
- Large open- plan living space with Juliet balcony
- Modern fitted kitchen with integrated appliances
- Views over landscaped communal gardens
- Long lease & Right to manage
- Moments from Ladywell Station (Zone 3, fast trains to London Bridge)
- Opposite Ladywell Fields and close to Hilly Fields
- Heart of Ladywell Village with cafés, shops





Ladywell Road



Floor Plan

Approx. Gross Internal Floor Area 728 sq. ft / 68.00 sq. m

Illustration for identification purposes only, measurements are approximate, not to scale.
Copyright © markbeaumont.com
Produced by Elements Property

Score	Energy rating	Current	Potential
92+	A		
81-91	B		
69-80	C	79 C	79 C
55-68	D		
39-54	E		
21-38	F		
1-20	G		

24 Scotts Road, Scotts Place,
Bromley, Kent, BR1 3QD

www.markbeaumont.com
sales@markbeaumont.com
020 8852 5000

Agents Note: Whilst every care has been taken to prepare these particulars, they are for guidance purposes only. All measurements are approximate and for general guidance purposes only and whilst every care has been taken to ensure their accuracy, they should not be relied upon and potential buyers are advised to recheck the measurements.