

## Luton Road

Harpenden, AL5 3NG

Beautifully presented mid-terrace four bedroom family home of circa 1,730 sq ft built by a highly regarded local developer. Arranged over three floors with plenty of living and entertaining space opening onto the private rear garden. Fantastic top floor Principal bedroom with en-suite, underfloor heating downstairs and in bathrooms. Integrated speaker system, and networked throughout. The Harrow is well placed for schooling, close to Kinsbourne Common and within easy reach of Harpenden town centre and station.

**Guide price £850,000**

# Luton Road

Harpenden, AL5 3NG



- Mid-terrace four bedroom home
- Circa 1,730 sq ft
- Arranged over three floors
- Principal bedroom with en-suite
- Private rear garden
- Close to Kinsbourne Common
- Within easy reach of Harpenden town centre & station
- Well placed for schooling
- Council Tax Band F

## Entrance

## Living Room

16'7" x 15'5" (5.06 x 4.70 )

## Kitchen/Dining Room

23'0" x 15'10" (7.03 x 4.83)

## Store

## Cloakroom

## Bedroom Two

15'5" x 11'6" (4.70 x 3.53)

## En-suite with shower

## Bedroom Three

13'10" x 7'10" (4.23 x 2.41)

## Bathroom

## Bedroom Four

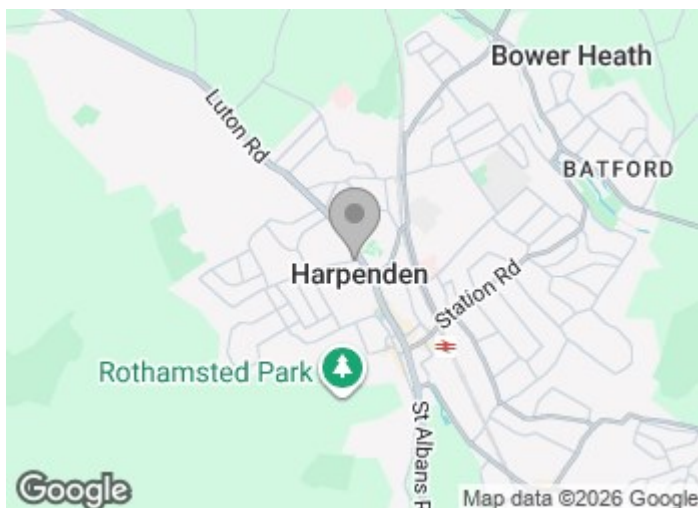
13'3" x 7'4" (4.04 x 2.26)

## Landing

## Bedroom One

18'7" x 17'5" (5.68 x 5.33)

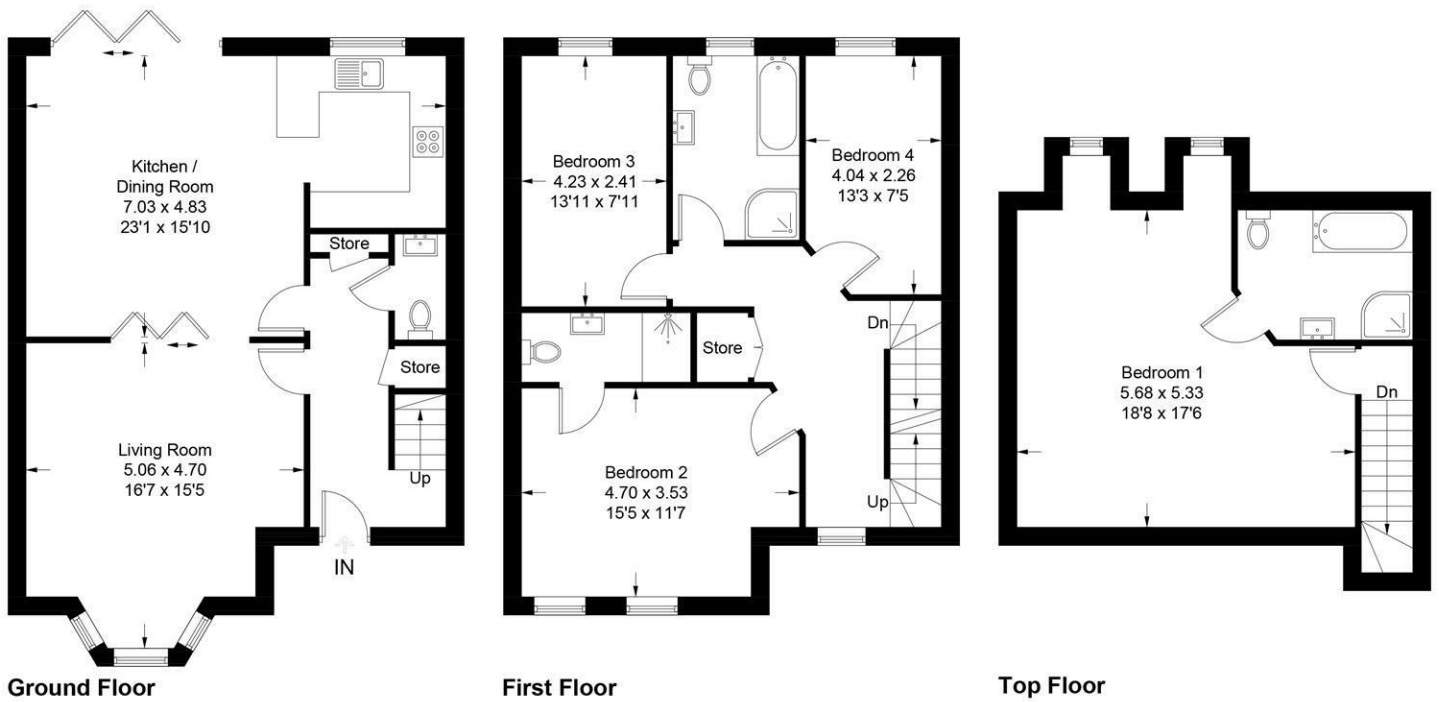
## En-suite with shower & bath





## The Harrow

Approximate Gross Internal Area = 161.0 sq m / 1730 sq ft



This plan is for layout guidance only. Not drawn to scale unless stated. Windows and door openings are approximate. Whilst every care is taken in the preparation of this plan, please check all dimensions, shapes and compass bearings before making any decisions reliant upon them. (ID1313637)

These particulars, whilst believed to be accurate are set out as a general outline only for guidance and do not constitute any part of an offer or contract. Intending purchasers should not rely on them as statements of representation of fact, but must satisfy themselves by inspection or otherwise as to their accuracy. No person in this firm's employment has the authority to make or give any representation or warranty in respect of the property.

