



## HEREFORD MANSIONS, W2

£1,250,000

Stunning building  
Penthouse apartment  
Three double bedrooms  
Concierge  
Access to westerly terrace  
EPC- D

@marshandparsons  
marshandparsons.co.uk

MARSH &  
PARSONS

# ABOUT THE PROPERTY

A wonderful opportunity to acquire a light filled three-bedroom penthouse apartment within this highly sought after mansion block on Hereford Road.

Hereford Mansions is a magnificent red brick Georgian mansion block just north of Westbourne Grove with its fabulous selection of fashionable boutique shops, cafes, and restaurants on its doorstep. There are excellent transport links close by on Notting Hill Gate, whilst the green open spaces of Hyde Park are also within close proximity. The current lease stands at 48 years with the expected lease extension cost to be in the region of £200,000, which has been factored into the asking price.





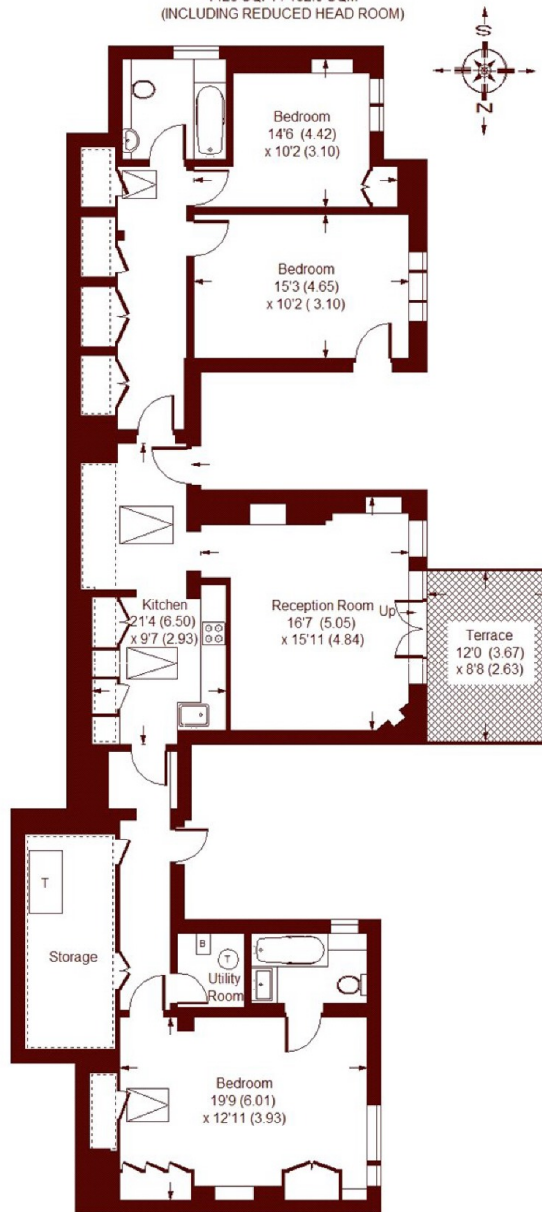




# STEP INSIDE HEREFORD MANSIONS

## Hereford Mansions, W2

APPROX. GROSS INTERNAL FLOOR AREA  
1426 SQFT / 132.5 SQM  
(INCLUDING REDUCED HEAD ROOM)



FIFTH FLOOR

--- = REDUCED HEADROOM BELOW 1.5 M / 5'0"

Whilst every attempt has been made to ensure the accuracy of the floor plan, measurements are approximate and not to scale.  
No guarantee is given on the total square footage of the property quoted on the plan. Figures given are for guidance.  
Plan is for illustration purposes only, not to be used for valuations.

Notting Hill  
020 7313 2890

Energy Rating: D We aim to make our particulars both accurate and reliable. However, they are not guaranteed; nor do they form part of an offer or contract. If you require clarification on any points then please contact us, especially if you're traveling some distance to view. Please note that appliances and heating systems have not been tested and therefore no warranties can be given as to their good working order

MARSH &  
PARSONS