



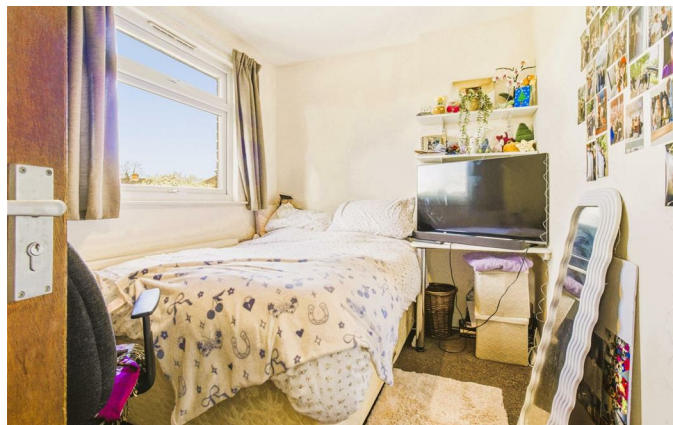
| | Worcester | WR2 5LW

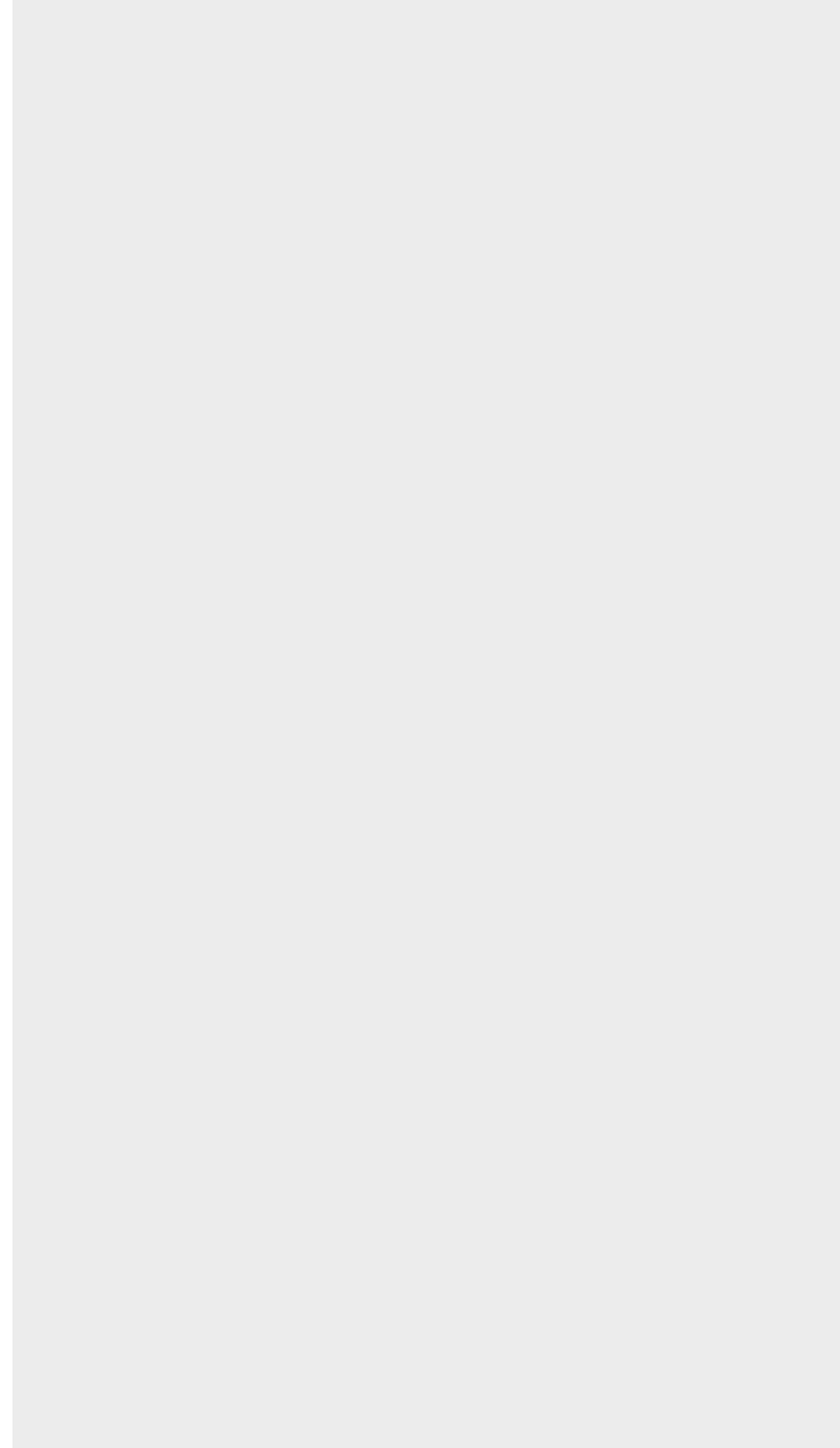
Offers In Excess Of £250,000



|
Worcester | WR2 5LW
Offers In Excess Of £250,000

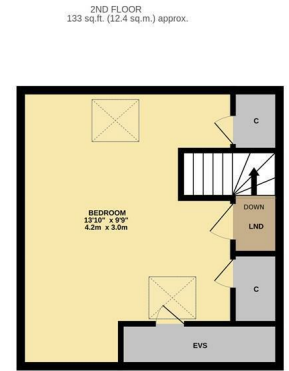
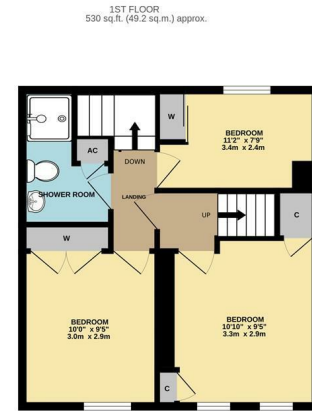
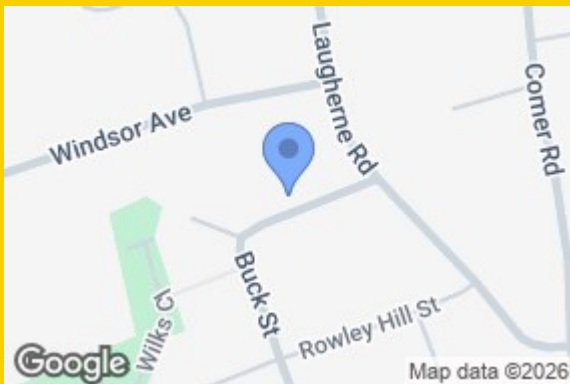
5-Bed HMO Investment St.Johns - Prime Worcester Location











TOTAL FLOOR AREA : 1193 sq.ft. (110.8 sq.m.) approx.

Whilst every attempt has been made to ensure the accuracy of the floorplan contained here, measurements of doors, windows, rooms and any other items are approximate and no responsibility is taken for any error, omission or mis-statement. This plan is for illustrative purposes only and should be used as such by any prospective purchaser. The services, systems and appliances shown have not been tested and no guarantee as to their operability or efficiency can be given.

Made with Metropix 62026

Council Tax Band EPC Rating D

Energy Efficiency Rating		Current	Potential
Very energy efficient - lower running costs			
(92 plus) A			
(81-91) B			
(69-80) C			75
(55-68) D		58	
(39-54) E			
(21-38) F			
(1-20) G			
Not energy efficient - higher running costs			
England & Wales	EU Directive 2002/91/EC		

58, London Road Worcester
Worcestershire
WR5 2DS
01905 935958
hello@yourpropertybox.co.uk
www.yourpropertybox.co.uk