



The Meadows

Grange Park, Northampton

oriordanbond
SALES & LETTINGS



The Meadows

Grange Park
NN4 5BU

Price
£425,000

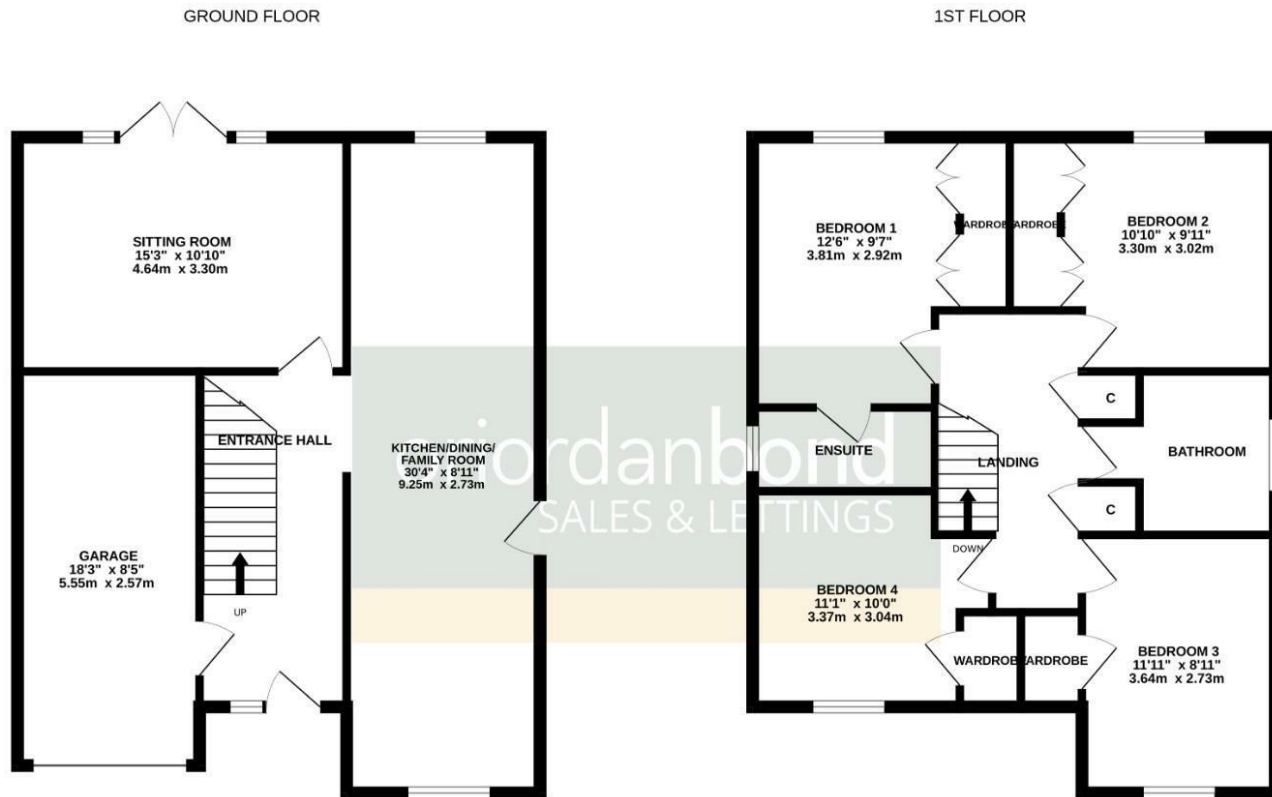
This four double bedroom detached family home is offered for sale in the popular residential location of Grange Park. This property is within close proximity of Woodland View Primary School, Foxfield Country Park as well as local shops and amenities.

The well presented accomodation comprises entrance hall, sitting room, open plan re-fitted kitchen/dining/family room, four well proportioned first floor bedrooms and a family bathroom with re-fitted en-suite to the master bedroom. Outside is a front garden with double width driveway providing off road parking leading to an integral garage with electric door. To the rear is an enclosed garden with laid to lawn area and decked patio seating area. Further benefits include uPVC double glazing and gas radiator heating. (A/1367/M)

- Four double bedroom detached home
- Re-fitted en-suite to master bedroom
- Re-fitted open plan kitchen/dining/family room
- Gas radiator heating
- Enclosed rear garden
- Driveway and integral garage with electric door







TOTAL FLOOR AREA : 1367 sq.ft. (127.0 sq.m.) approx.
 Whilst every attempt has been made to ensure the accuracy of the floorplan contained here, measurements of doors, windows, rooms and any other items are approximate and no responsibility is taken for any error, omission or mis-statement. This plan is for illustrative purposes only and should be used as such by any prospective purchaser. The services, systems and appliances shown have not been tested and no guarantee as to their operability or efficiency can be given.
 Made with Metropix ©2026



Additional information

- Council Tax Band: E
- Energy Efficiency Rating: C

Viewing

Viewing strictly by appointment – details below

Disclaimer

O’Riordan Bond Estate Agents Limited has not tested apparatus, equipment, fittings or services and so cannot verify they are in working order. The buyer is advised to obtain verification from their solicitor or surveyor.

O’Riordan Bond Grange Park Sales

01604 432007

grangepark@oriordanbond.co.uk

