



Temple Fortune Lane, Hampstead Garden Suburb NW11

Long Leasehold

£1,895,000



800 Finchley Road, Hampstead Garden Suburb, London, NW11 7TJ

020 8458 5000

sales@litchfields.com

www.litchfields.com

Offices also in Highgate



A distinguished and substantial five-bedroom Grade II Listed semi-detached residence, dating from circa 1909, offering an exceptional blend of period charm and generous family living. Set within an attractive garden square comprising just twelve homes, this characterful property enjoys a highly sought-after location close to the Heath Extension, as well as the amenities of Temple Fortune, including shops, cafés, and convenient transport links. Golders Green Underground Station is approximately a pleasant 0.6-mile walk away. The house provides beautifully bright and well-proportioned accommodation throughout, with an unusually spacious ground floor featuring three reception rooms alongside a welcoming kitchen/breakfast room—ideal for both everyday family life and entertaining. Additional benefits include a single garage and a well-maintained rear garden, complete with a raised patio area perfect for outdoor dining. A rare opportunity to acquire a charming and substantial family home in a prime location—early viewing is highly recommended.



5

2

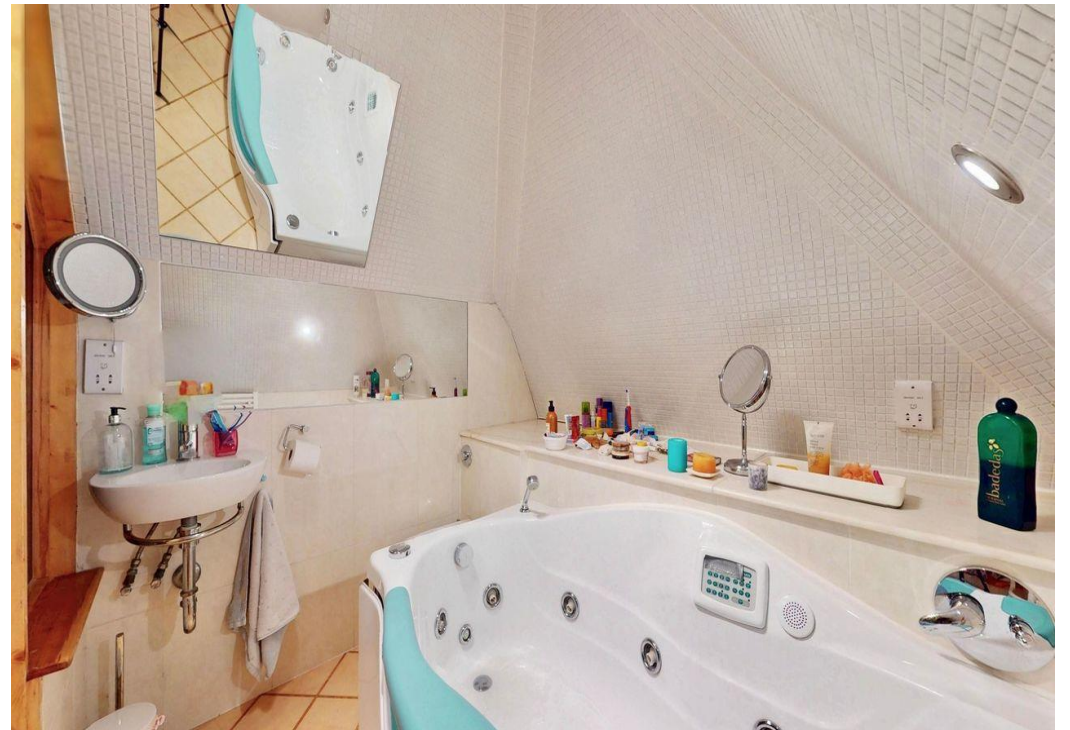
3



- Five Bedrooms
- Two Bathrooms
- Living Room
- Dining Room
- Conservatory/Morning Room
- Kitchen/Breakfast room
- Cloakroom
- Office area
- Garage
- Gardens
- EPC=TBA











GROUND FLOOR



FIRST FLOOR

SECOND FLOOR

GROSS INTERNAL AREA
TOTAL: 219 m²/2,357 sq ft

GROUND FLOOR: 98 m²/1,052 sq ft, FIRST FLOOR: 82 m²/886 sq ft, SECOND FLOOR: 39 m²/419 sq ft

EXCLUDED AREA: GARAGE: 12 m²/134 sq ft, GARDEN: 159 m²/1,712 sq ft, SHED: 2 m²/24 sq ft

SIZE AND DIMENSIONS ARE APPROXIMATE, ACTUAL MAY VARY



800 Finchley Road, Hampstead Garden Suburb, London, NW11 7TJ

020 8458 5000

sales@litchfields.com

www.litchfields.com

Offices also in Highgate