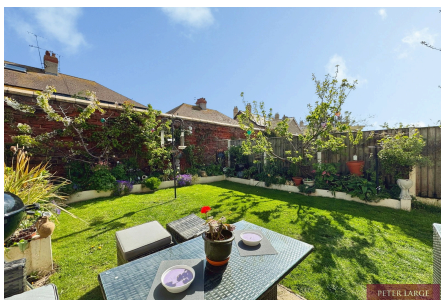


26 Sandringham Avenue, Rhyl, LL18 1NF

£189,950

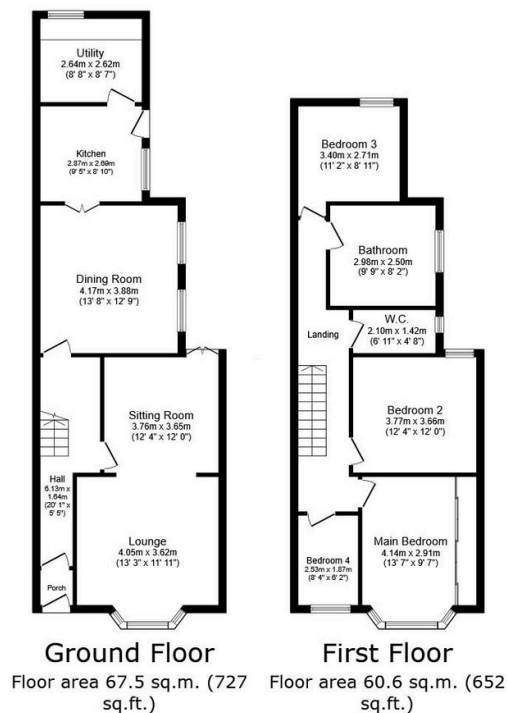
4 2 2



This lovely Victorian four bedroom semi-detached house which retains some of its original features, is situated in the coastal town of Rhyl and is within a short walk from the seafront and promenade. The property has two reception rooms, currently arranged as a lounge and sitting room, providing flexible living and dining room, kitchen and a good size utility room, offering additional storage and appliance space. There is a bathroom and a separate toilet, providing practical family accommodation. Outside, the property benefits from a sunny rear garden, offering outdoor space for recreation or relaxing. Located close to Rhyl's seafront, the property is well placed for local amenities, including shops, cafés and services in Rhyl town centre, are within reach, as are leisure facilities such as the waterfront attractions.

## Key Features

- Four-bedroom Victorian semi-detached home
- Two flexible reception rooms
- Short walk to seafront promenade
- Rear sunny garden for outdoor space
- Bathroom and separate W.C
- Useful utility room and storage
- Attractive option for families, investors
- Freehold
- Council tax - B / EPC - tbc
- Date 23/04/2026



Total floor area: 128.1 sq.m. (1,379 sq.ft.)

This floor plan is for illustrative purposes only. It is not drawn to scale. Any measurements, floor areas (including any total floor area), openings and orientations are approximate. No details are guaranteed, they cannot be relied upon for any purpose and do not form any part of any agreement. No liability is taken for any error, omission or misstatement. A party must rely upon its own inspection(s). Powered by [www.Propertybox.io](http://www.Propertybox.io)