



Selsdon Way, E14

£375,000

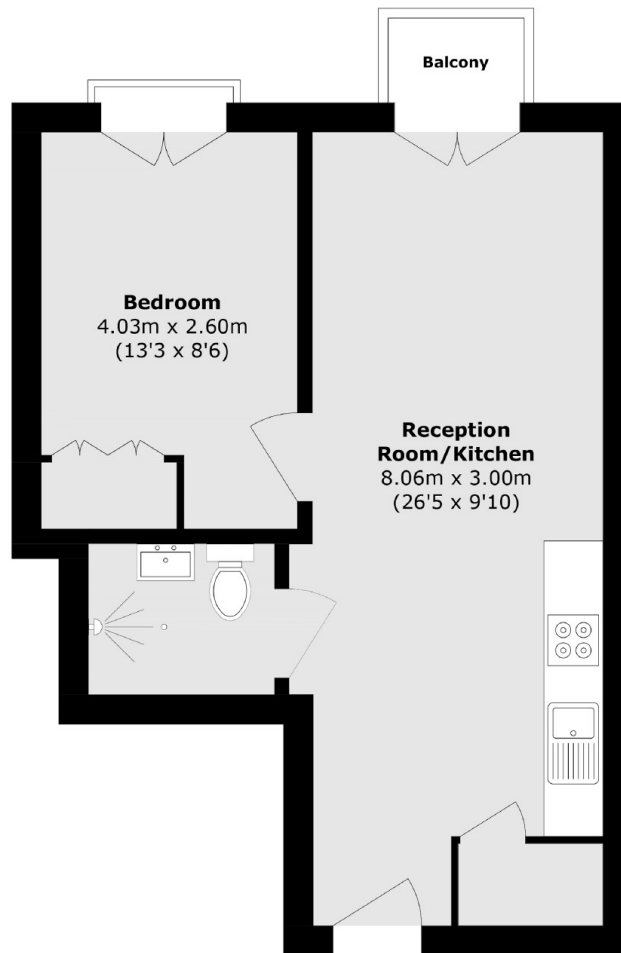
Located within this dockside development is this one bedroom home offered to the market on a chain free basis. The property Includes an open plan reception, private balcony with side aspect water view, bedroom with Juliette balcony and concierge service.

Located close to Cross Harbour DLR, South Quay and within walking distance of Canary Wharf, a selection of shops, trendy bars, and premium restaurants, The Jubilee and Elizabeth lines for easy access to the City, West End, Heathrow and London City Airport

Features

- 414 Square Feet
- Third Floor
- Private Balcony
- Concierge Service
- Dock side Development
- No Onward Chain

Selsdon Way,
London, E14



Total area (approx.): 38.5 sq. m (414.4 sq. ft)

Balcony area (approx.): 1.5 sq. m (16.1 sq. ft)

Dexters

Canary Wharf
39 Westferry Road
London
E14 8JH
Sales
020 7517 1199

Energy Rating: D. We aim to make our particulars both accurate and reliable. However they are not guaranteed; nor do they form part of an offer or contract. If you require clarification on any points then please contact us, especially if you're traveling some distance to view. Please note that appliances and heating systems have not been tested and therefore no warranties can be given as to their good working order.

 **RICS** | Regulated
Estate Agent
and Letting Agent

dexters.co.uk