



Talbot Road, N6

£425,000

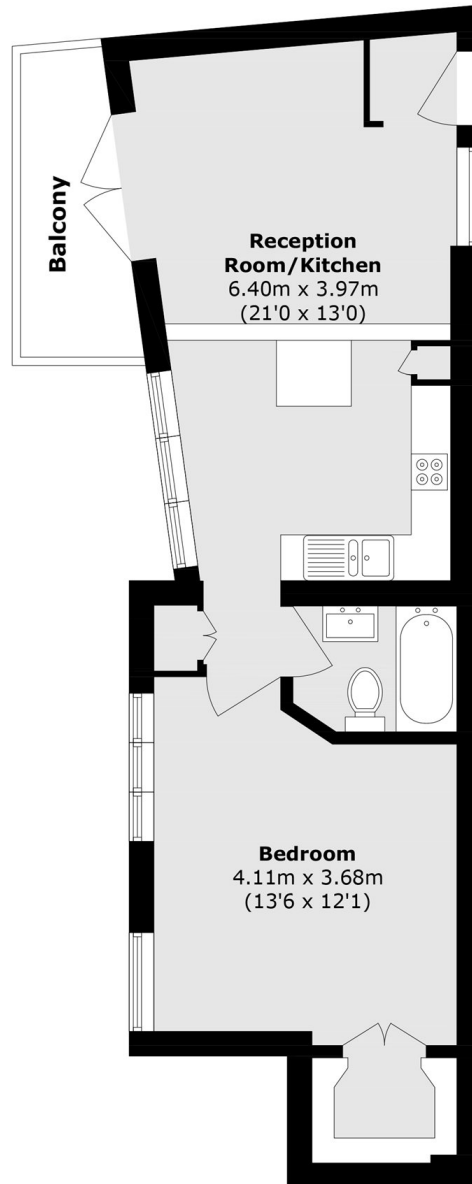
A smart, well presented one bedroom flat with its own private entrance, a spacious open plan kitchen/reception room, private rear patio garden and small off-street parking space

Talbot Road is well positioned for access into the village and is within easy reach of Highgate underground station along with historic Highgate & Queens Wood.

Features

- Double Bedroom
- Open Plan Reception
- Bathroom
- Patio Garden
- Small Parking Space
- Own Entrance

Talbot Road, London, N6



Total area (approx.): 46.0 sq. m (495.1 sq. ft)
Balcony area (approx.): 5.3 sq. m (57.0 sq. ft)