



Shacklewell Lane, E8

£2,600 Per calendar month

A rare two bedroom conversion split over two floors on Shacklewell Lane. This property has two good sized double bedrooms, two bathrooms, an open plan reception and comes furnished.

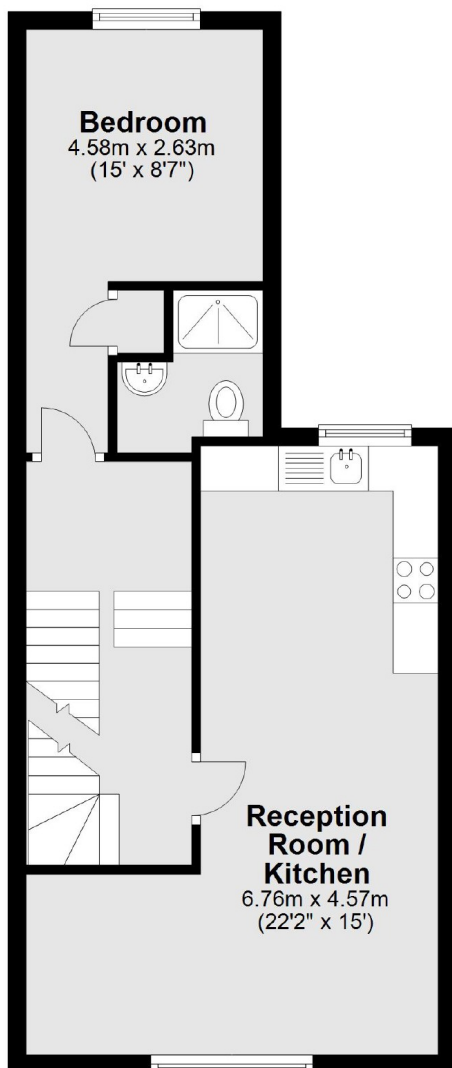
Central location close to Dalston Junction, Hackney Central and Hackney Downs for all local shops, bars and restaurants.

Features

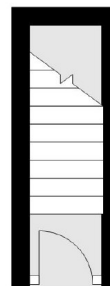
- Two bedrooms
- Two Bathrooms
- Refurbished
- Open Plan
- Split Level
- Furnished

Shacklewell Lane, London, E8

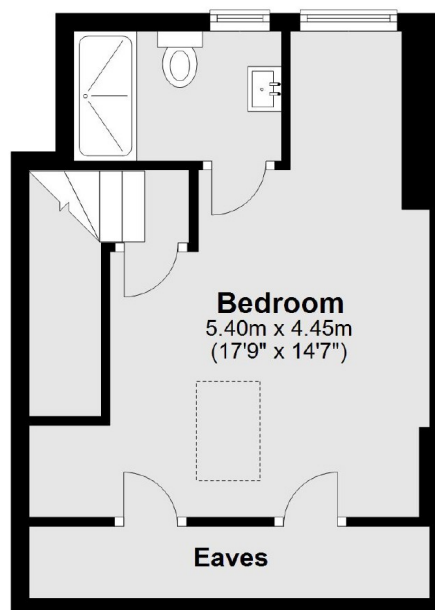
First Floor



Ground Floor



Second Floor



Total area: approx. 68.5 sq. metres (737.2 sq. feet)