



Bonfield Road, SE13

£1,800 Per calendar month

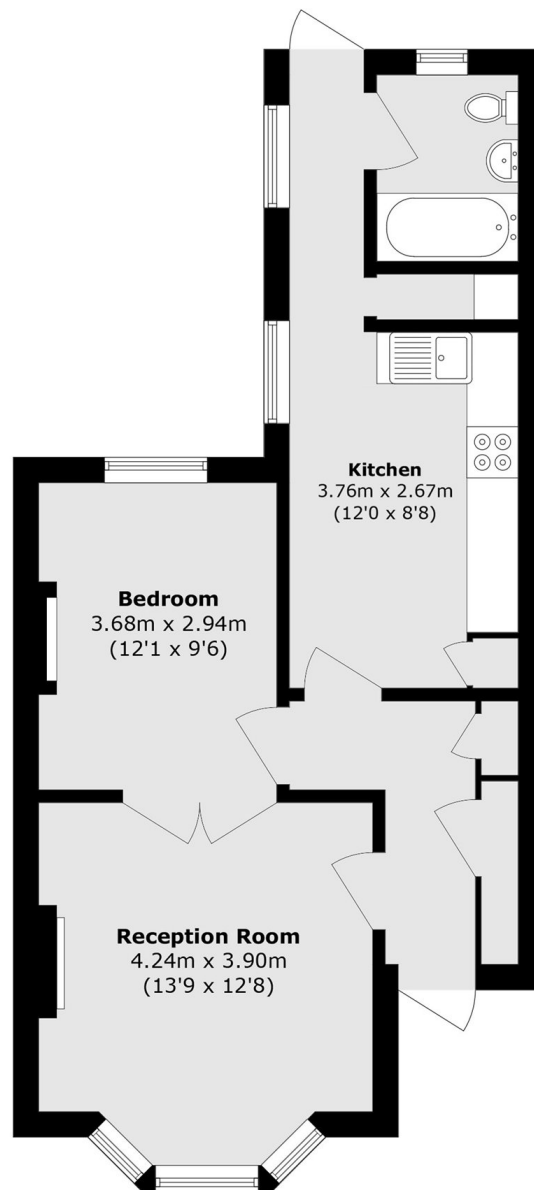
A beautifully presented ground floor flat seamlessly blending period charm with contemporary finishes. The property features an elegant reception room with a log burner and exposed brickwork, creating a warm and characterful focal point. To the rear, a spacious eat-in fitted kitchen opens directly onto a private garden and a modern bathroom.

Bonfield Road is ideally situated moments from Lewisham mainline and DLR stations, providing fast and convenient links into Central London. The vibrant amenities of Lewisham town centre are just a short distance away.

Features

- Ground Floor Flat
- One Double Bedroom
- Period Features
- Contemporary Finishes
- Eat-In Kitchen
- Private Garden

Bonfield Road,
London, SE13



Total area (approx.): 52.2 sq. m (561.9 sq. ft)