

# 41 St John Street

WHITHORN, DUMFRIES AND GALLOWAY, DG8 8PD



*Charming three/four bed-bed mid-terrace cottage. An ideal holiday home or holiday let, perfect for a family. Set in the beautiful area of Whithorn, Dumfries & Galloway*



01387 218 080



[www.mcewanfraserlegal.co.uk](http://www.mcewanfraserlegal.co.uk)



[info@mcewanfraserlegal.co.uk](mailto:info@mcewanfraserlegal.co.uk)



We are delighted to bring to the market this beautifully presented three/four-bedroom mid-terraced home, set in a popular family-friendly street within Whithorn, a town known for its neighbourly spirit. This lovely property makes a perfect home, holiday home or holiday let for anyone seeking a get away from it all location.

# THE KITCHEN



Ground floor accommodation comprises a fully fitted kitchen, finished in a range of units, with an electric double oven and hob, with space for a washing machine and fridge. The kitchen leads effortlessly to the spacious dining room, an ideal place to get together with friends and family at meal times. The dining room is flooded with natural light, and the French doors provide easy access to the garden, with stunning open views.

# THE DINING ROOM



There are three/four good-sized bedrooms in this lovely home, all of which have ample space for free-standing furniture, and a bright and pleasing atmosphere. The family bathroom is finished with an electric shower and a corner bath.

# BEDROOM 1



# BEDROOM 2



# BEDROOM 3



# THE BATHROOM





The accommodation comprises a beautifully bright and relaxing upstairs lounge. The room features a bay window, offering a great place to sit and enjoy a coffee and a good book. The space affords the owners plenty of options for furniture layouts and includes a log burner. The upper floor also benefits from a dressing room/fourth bedroom and a shower room.

## THE SHOWER ROOM



# THE LOUNGE



# THE DRESSING ROOM / BEDROOM 4



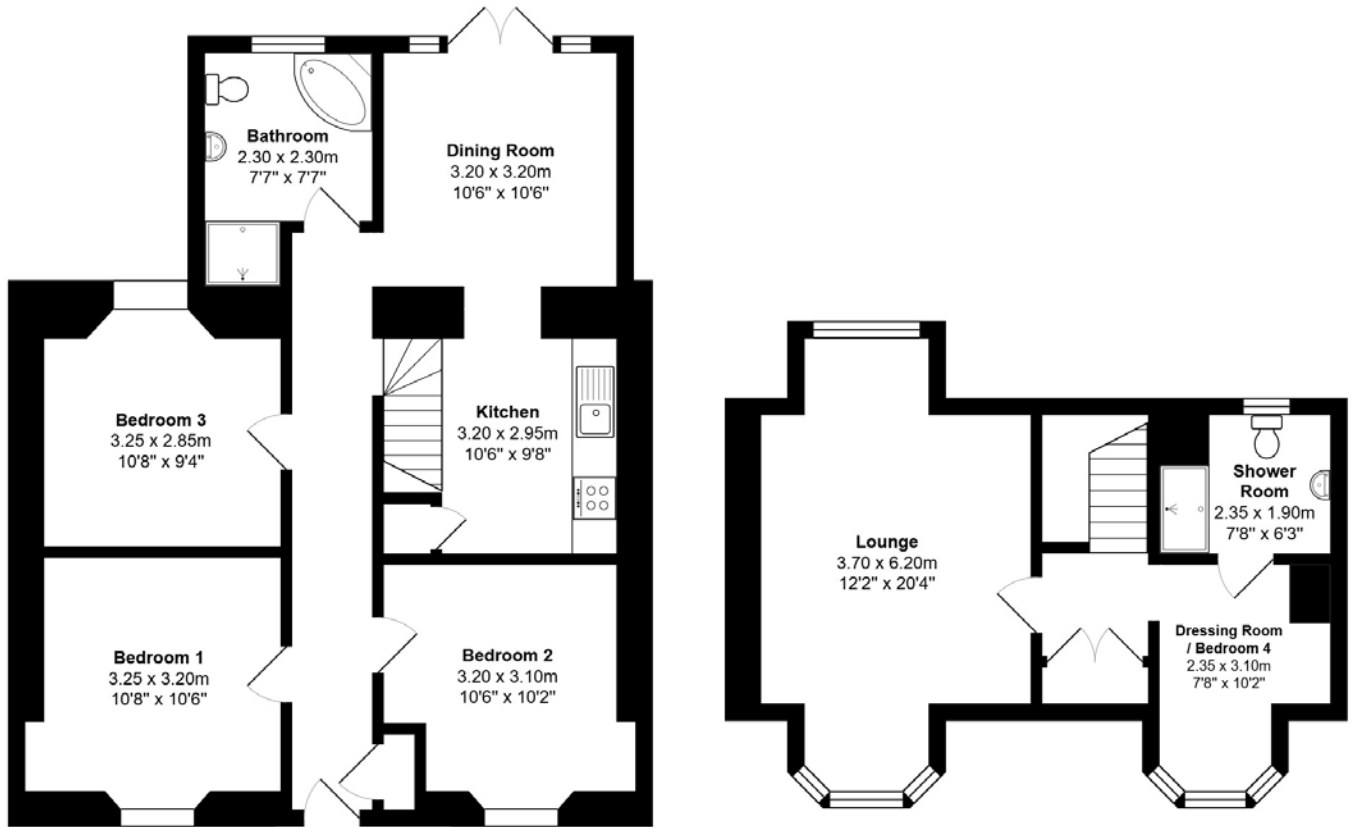
The home is kept warm and comfortable with double glazing and electric heating. The rear garden space offers stunning open views across the countryside and a great place to relax on sunnier days.

This great home would make an ideal buy for a family as a home, holiday home or even a great investment property for a smart Buy-To-Let investor. Early viewing is strongly advised for anyone seeking a great family property in an idyllic and captivating location

# EXTERNALS

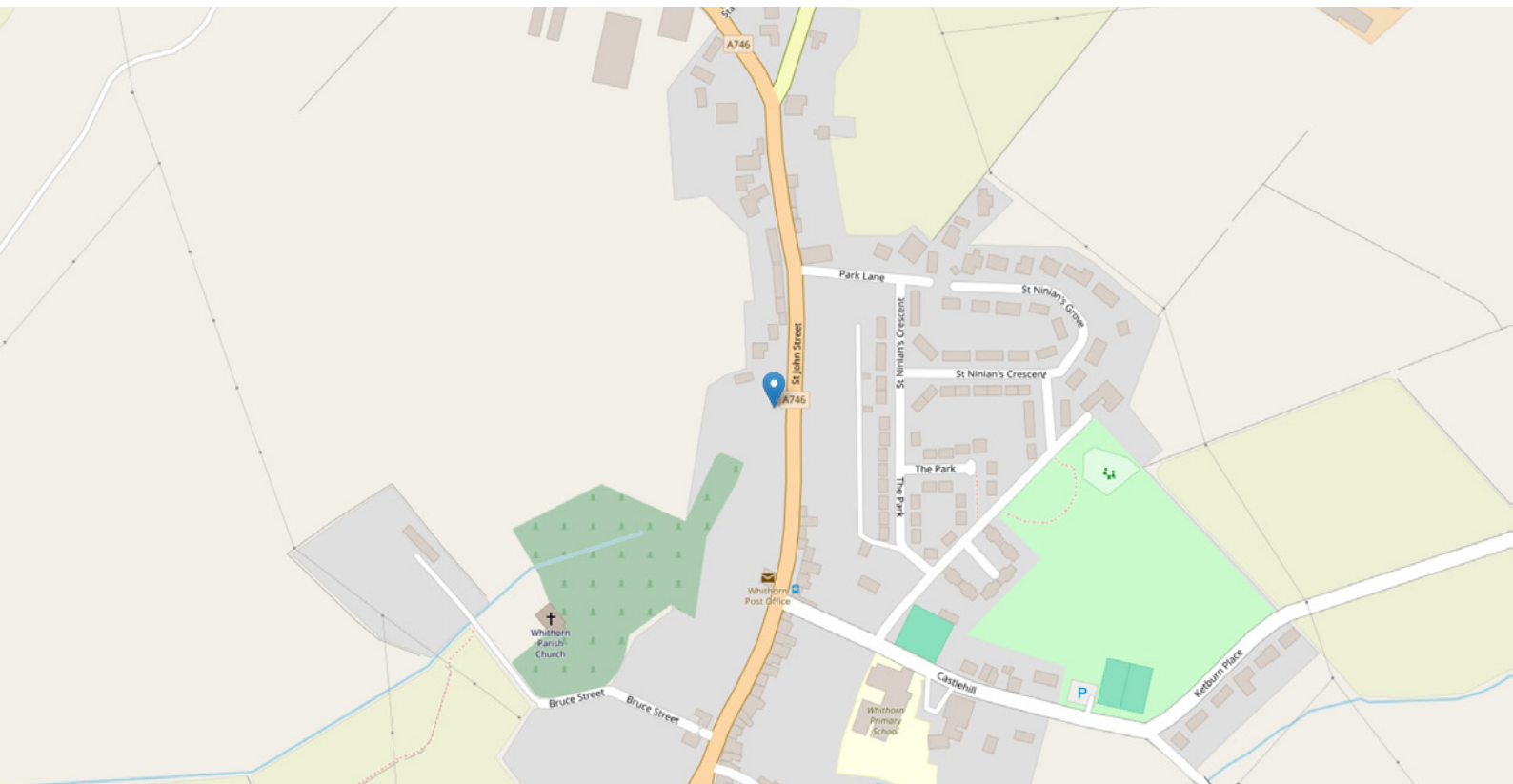


# FLOOR PLAN & DIMENSIONS



Approximate Dimensions (Taken from the widest point)

Gross internal floor area (m<sup>2</sup>): 94m<sup>2</sup> | EPC Rating: E



# THE LOCATION

Whithorn is located on the Machars Peninsula and is well known for its historical past, steeped in early Christian movements. These include strong historical connections with St Ninian, resulting in Whithorn being known as Scotland's Cradle of Christianity.

Whithorn is also a recognised UNESCO Biosphere community and is home to the smallest theatre in Scotland, The Swallow Theatre. Whithorn is popular with cyclists and walkers, as there are many great marked routes. There is also a selection of places to eat, drink and stay in Whithorn.



**McEwan Fraser Legal**

Solicitors & Estate Agents

Tel. 01387 218 080

[www.mcewanfraserlegal.co.uk](http://www.mcewanfraserlegal.co.uk)

[info@mcewanfraserlegal.co.uk](mailto:info@mcewanfraserlegal.co.uk)

Part  
Exchange  
Available



Text and description  
**KEN MEISAK**  
Area Sales Manager



Professional photography  
**CRAIG DEMPSTER**  
Photographer



Layout graphics and design  
**ALLY CLARK**  
Designer

**Disclaimer:** The copyright for all photographs, floorplans, graphics, written copy and images belongs to McEwan Fraser Legal and use by others or transfer to third parties is forbidden without our express consent in writing. Prospective purchasers are advised to have their interest noted through their solicitor as soon as possible in order that they may be informed in the event of an early closing date being set for the receipt of offers. These particulars do not form part of any offer and all statements and photographs contained herein are for illustrative purposes and are not guaranteed or warranted. Buyers must satisfy themselves for the accuracy and authenticity of the brochure and should always visit the property to satisfy themselves of the property's suitability and obtain in writing via their solicitor what's included with the property including any land. The dimensions provided may include, or exclude, recesses intrusions and fitted furniture. Any measurements provided are for guide purposes only and have been taken by electronic device at the widest point. Any reference to alterations to, or use of, any part of the property does not mean that any necessary planning, building regulations or other consent has been obtained. A buyer must find out by inspection or in other ways that all information is correct. None of the appliances/services stated or shown in this brochure have been tested by ourselves and none are warranted by our seller or MFL.