



## 8 Foundry Mews

, Trimdon Station, TS29 6GA

**Offers Over £264,500**

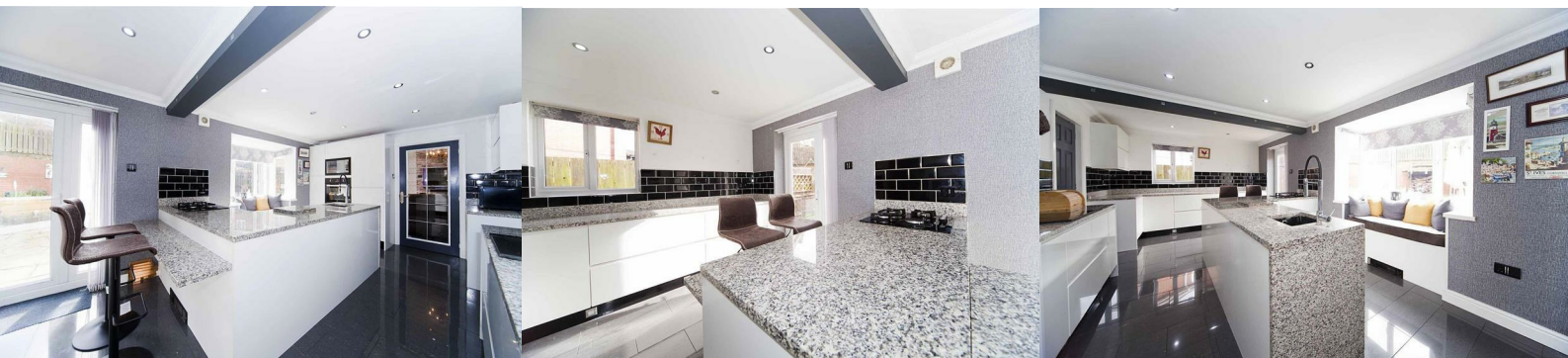


Nestled in the charming area of Foundry Mews, Trimdon Station, this impressive detached house offers a perfect blend of space and modern living. Boasting five generously sized bedrooms and five reception rooms, this property is ideal for families seeking comfort and versatility. The master bedroom features an en-suite bathroom, providing a private sanctuary for relaxation.

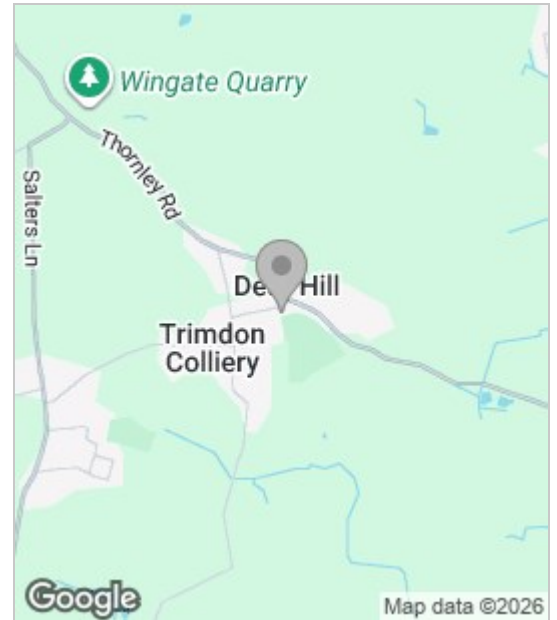
The heart of the home is undoubtedly the stunning granite kitchen, which is both stylish and functional, making it a delightful space for culinary enthusiasts. The expansive layout allows for seamless entertaining and family gatherings, with ample room for everyone to enjoy.

Set on a large corner south facing plot, this property benefits from a substantial outdoor space, perfect for children to play or for hosting summer barbecues. Additionally, the driveway accommodates up to four vehicles, ensuring convenience for residents and guests alike.

For those who commute, the location is excellent, with easy access to Durham, the A19 & is within 15 minutes to Hartlepool, making travel straightforward and efficient. This home truly offers a wonderful opportunity for those looking to settle in a peaceful yet well-connected area. With its spacious interiors and prime location, this property is not to be missed.



## Area Map



## Floor Plan



## Energy Efficiency Graph



These particulars, whilst believed to be accurate are set out as a general outline only for guidance and do not constitute any part of an offer or contract. Intending purchasers should not rely on them as statements of representation of fact, but must satisfy themselves by inspection or otherwise as to their accuracy. No person in this firm's employment has the authority to make or give any representation or warranty in respect of the property.