

Bramber Road, W14

£499,950

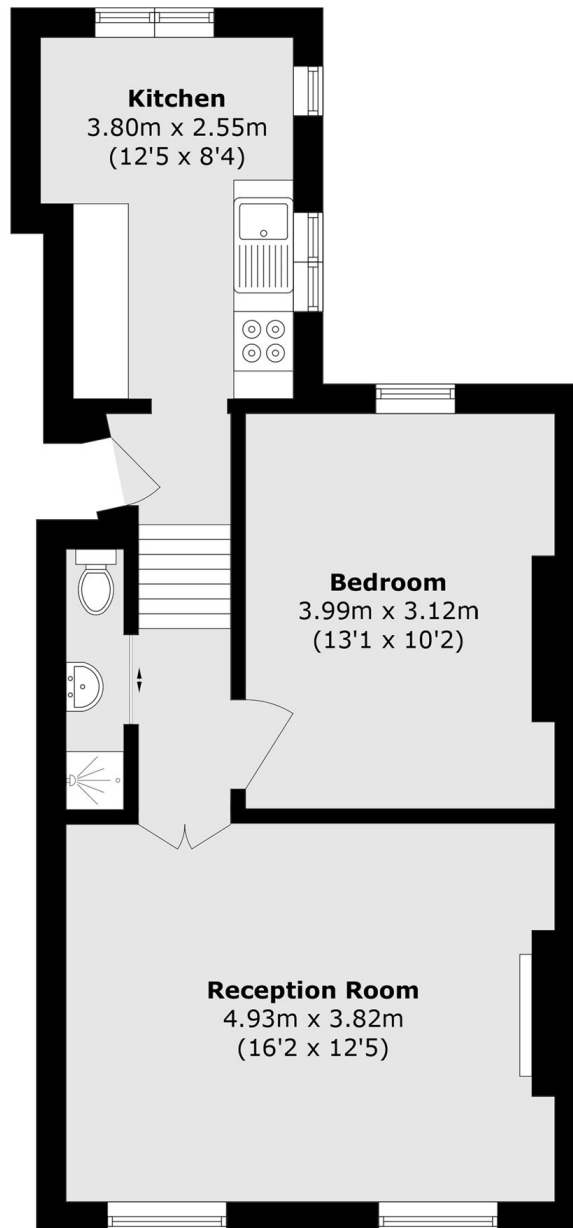
This split-level first floor flat is located in a sought after Victorian Period conversion, offering a bright and airy living space with plenty of natural light throughout. The property also has potential to extend upwards, making it an ideal first home or investment.

Bramber Road is located just off from North End Road on the edge of Fulham with numerous shops and bars. Moments away from West Brompton, West Kensington, Barons Court and Fulham Broadway stations.

Features

- One Bedroom
- Potential To Extend
- Close To Public Transport
- Split-Level
- Chain Free
- Plenty Of Light

Bramber Road, London, W14



Total area (approx.): 47.4 sq. m (510.2 sq. ft)