



## Northiam, N12

£5,850 Per calendar month

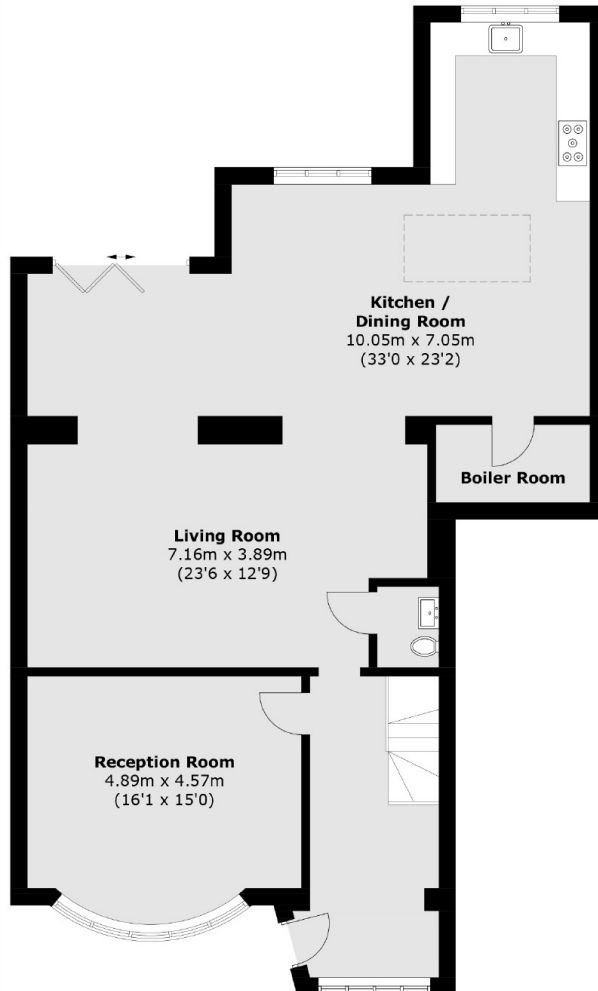
A modern five bedroom house, with a large reception, off street parking and modern kitchen and bathrooms. This property also has a guest WC and underfloor heating.

Located in central Woodside Park, moments from the Tube Station and all other local amenities

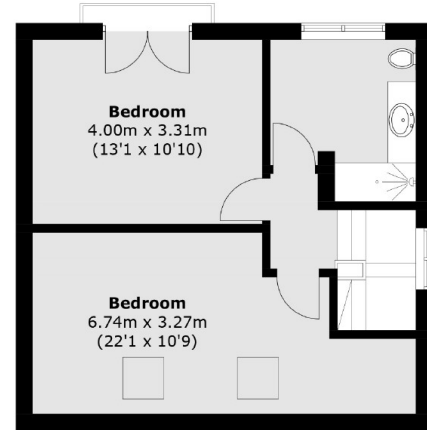
### Features

- Five Bedrooms
- Two Receptions
- Two Bathrooms
- Off Street Parking
- Underfloor Heating
- Modern

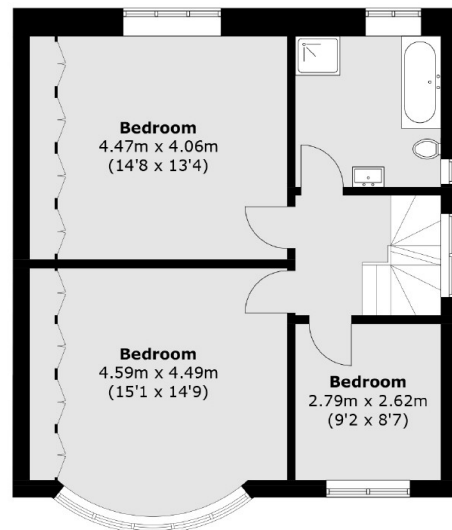
# Northiam, London, N12



**Ground Floor**



**Second Floor**



**First Floor**

Total area (approx.): 222.1 sq. m (2,390.6 sq. ft)