



Price
£500,000

Freehold

3x  1x  1x 

**Tufton Road, Chingford,
E4**

OVER 60?

Secure this property
for up to **59% less!**

 **DOUGLAS
ALLEN**
Helping you move forwards



Main features

- Three bed terraced house
- Chain-free
- Large rear garden
- Potential to extend to the rear and into the loft (STPP)
- Close to Chingford Mount

Accommodation

GROUND FLOOR

Lounge/Dining Room: 25'4 x 11'6
(7.73m x 3.51m)

Kitchen: 17'2 x 7'8 (5.24m x 2.34m)

FIRST FLOOR

Bedroom 1: 17'2 x 11'6 (5.24m x 3.51m)

Bedroom 2: 11'5 x 10'0 (3.48m x 3.05m)

Bedroom 3: 7'9 x 6'10 (2.36m x 2.08m)

Family Bathroom

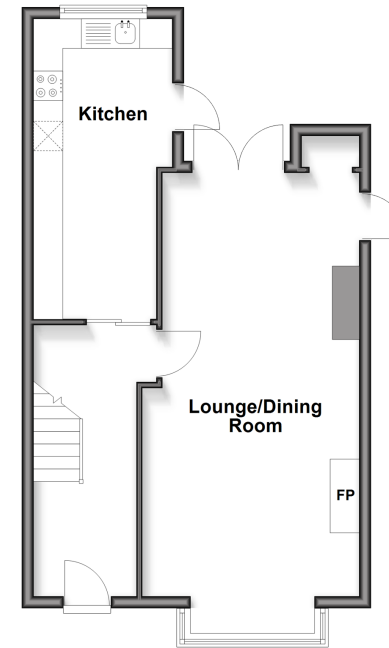
OUTSIDE

Front Garden

Rear Garden

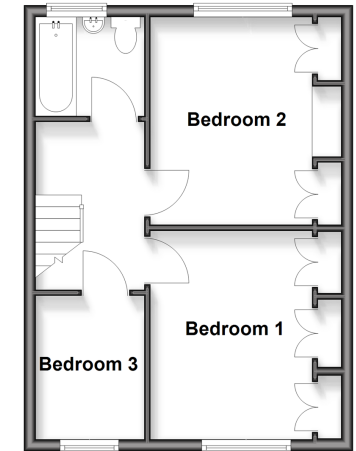
Ground Floor

Approx. 47.5 sq. metres (511.3 sq. feet)



First Floor

Approx. 37.5 sq. metres (403.6 sq. feet)



Call Chingford - 020 8524 6331 ■ douglasallen.co.uk

- A private rental licensing scheme applies to some properties in this area, please check with the Local Authority before proceeding
- Through a Homewise Home For Life Plan people aged 60+ can secure this property for up to 59% less, by purchasing a Lifetime Lease



901413BP/20260430/AR/RUM