




## Haycroft Close, Coulsdon

Guide Price £685,000

 4  2  2



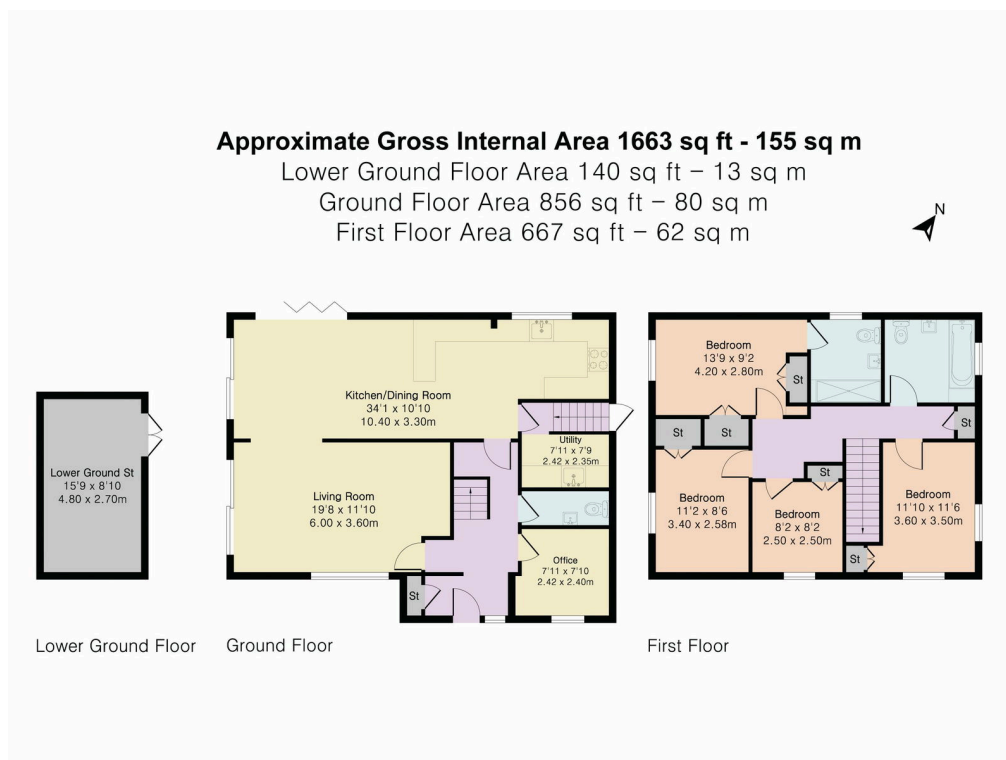
### Beautiful 4-Bedroom Family Home

Situated in the sought-after Haycroft Close, this modern and stylish 4-bedroom home offers the perfect blend of space, comfort, and contemporary design.

The heart of the home is a stunning open-plan kitchen/dining area, thoughtfully designed for both everyday living and entertaining. This bright and spacious room flows seamlessly into a cosy living room, creating a warm and inviting space for the whole family.

## Key Features

- Detached
- Large Kitchen-Dining Room
- Garden
- Gas Central Heating
- Council Tax - F
- 4 Bedrooms
- Garage
- Cul-de-sac
- Open Plan
- ECP - D



Floor plan produced in accordance with RICS Property Measurement 2nd Edition. Although Pink Plan Ltd ensures the highest level of accuracy, measurements of doors, windows and rooms are approximate and no responsibility is taken for error, omission or misstatement. These plans are for representation purposes only and no guarantee is given on the total square footage of the property within this plan. The figure icon is for initial guidance only and should not be relied on as a basis of valuation.