

for sale

£250,000 Freehold



Newbolt Street Walsall WS5 4PF

A substantial FOUR-BEDROOM SEMI-DETACHED home offering versatile accommodation throughout, featuring two reception rooms, two shower rooms, a generous rear garden, extensive driveway parking and a detached outbuilding. Ideal for growing families seeking space both inside and out.

Newbolt Street Walsall WS5 4PF

Hall

Welcoming entrance hall.

Living Room

12' 6" x 14' 5" (3.81m x 4.39m)

Spacious living room having double-glazed window to front aspect, feature fireplace and central heating radiator.

Kitchen

7' 3" x 18' 4" (2.21m x 5.59m)

Modern fitted kitchen having a range of wall and base units, stainless steel inset sink, double-glazed window to rear and door to rear garden.

Reception Room

20' 1" x 8' 2" (6.12m x 2.49m)

Generous reception room having double glazed sliding double doors to front aspect and central heating radiator.

Wet Room

Ground floor wet room having handheld shower and low-flush wc.

Landing

Bedroom One

10' 7" x 12' 6" (3.23m x 3.81m)

Generous double bedroom having double-glazed window to rear aspect and central heating radiator.

Bedroom Two

9' 2" x 18' 4" (2.79m x 5.59m)

Having double-glazed window to front and central heating radiator.

Bedroom Three

8' 2" x 9' 10" (2.49m x 3.00m)

Having double-glazed window to rear and central heating radiator.

Bedroom Four

9' 2" x 8' 2" (2.79m x 2.49m)

Having double-glazed window to front and central heating radiator.

Shower Room

8' 2" x 8' 2" (2.49m x 2.49m)



Generous family shower room comprising a shower cubicle, low-flush toilet, wash hand basin with vanity unit, feature spotlight fixtures and obscure glazed window to rear.

Rear Garden

Generous private rear garden with fenced boundaries mainly laid to lawn.

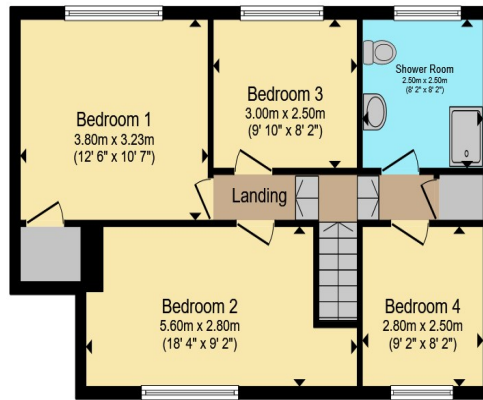
Shed/Outbuilding

Additional storage space.

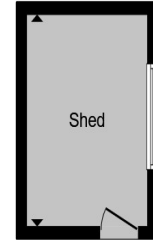




Ground Floor



First Floor



Outbuilding

Total floor area 115.1 m² (1,239 sq.ft.) approx

This floor plan is for illustrative purposes only. It is not drawn to scale. Any measurements, floor areas (including any total floor area), openings and orientation are approximate. No details are guaranteed, they cannot be relied upon for any purpose and they do not form part of any agreement. No liability is taken for any error, omission or misstatement. A party must rely upon its own inspection(s). Powered by www.propertybox.io



To view this property please contact Paul Dubberley on

T 01902 633323
E willenhall@pauldubberley.co.uk

14 New Road
 WILLENHALL WV13 2BG

Property Ref: PW1104623 - 0003
 Tenure:Freehold EPC Rating: C
 Council Tax Band: B

check out more properties at PaulDubberley.co.uk



1. MONEY LAUNDERING REGULATIONS Intending purchasers will be asked to produce identification documentation at a later stage and we would ask for your co-operation in order that there will be no delay in agreeing the sale. 2. These particulars do not constitute part or all of an offer or contract. 3. The measurements indicated are supplied for guidance only and as such must be considered incorrect. Potential buyers are advised to recheck measurements before committing to any expense. 4. We have not tested any apparatus, equipment, fixtures, fittings or services and it is in the buyers interest to check the working condition of any appliances.

Paul Dubberley is a trading name of Connells Residential which is registered in England and Wales under company number 1489613, Registered Office is Cumbria House, 16-20 Hockliffe Street, Leighton Buzzard, Bedfordshire, LU7 1GN. VAT Registration Number is 500 2481 05.

see all our properties at www.pauldubberley.co.uk | www.rightmove.co.uk | www.zoopla.co.uk