



Riverside, Deeping Gate
£240,000 Freehold

**Sharman
Quinney**

Key Features



- Cottage
- Two Bedrooms
- River Views
- Lounge/Diner
- Enclosed Rear South Facing Rear Garden

This well-appointed cottage located in a sought after area of the Deepings benefits from a lounge dining room, kitchen, shower room and two bedrooms to the first floor. An enclosed landscaped rear garden offers privacy and tranquillity.

Accommodation Includes

Door to:

Lounge Dining Room
3.79m max x 6.51m max (12'5" x 21'4"). Wood flooring, feature stone fire place with inset solid fuel fire, feature beams, radiator, two understairs storage cupboards, window to front aspect offering river views, stairs to first floor and landing.



Kitchen

2.90m x 2.23m (9'6" x 7'3"). Comprising a range of base and eye level units with worktops over, sink with mixer tap, plumbing for washing machine, electric oven and hob, space for fridge, skylight, French doors opening to enclosed rear garden.

Shower Room

Comprising shower cubicle, wash hand basin, wc, radiator, skylight.

Stairs to first floor and landing

Bedroom One

3.18m x 3.66m (10'5" x 12'). Wood flooring, window to front aspect, fitted wall to wall wardrobes.

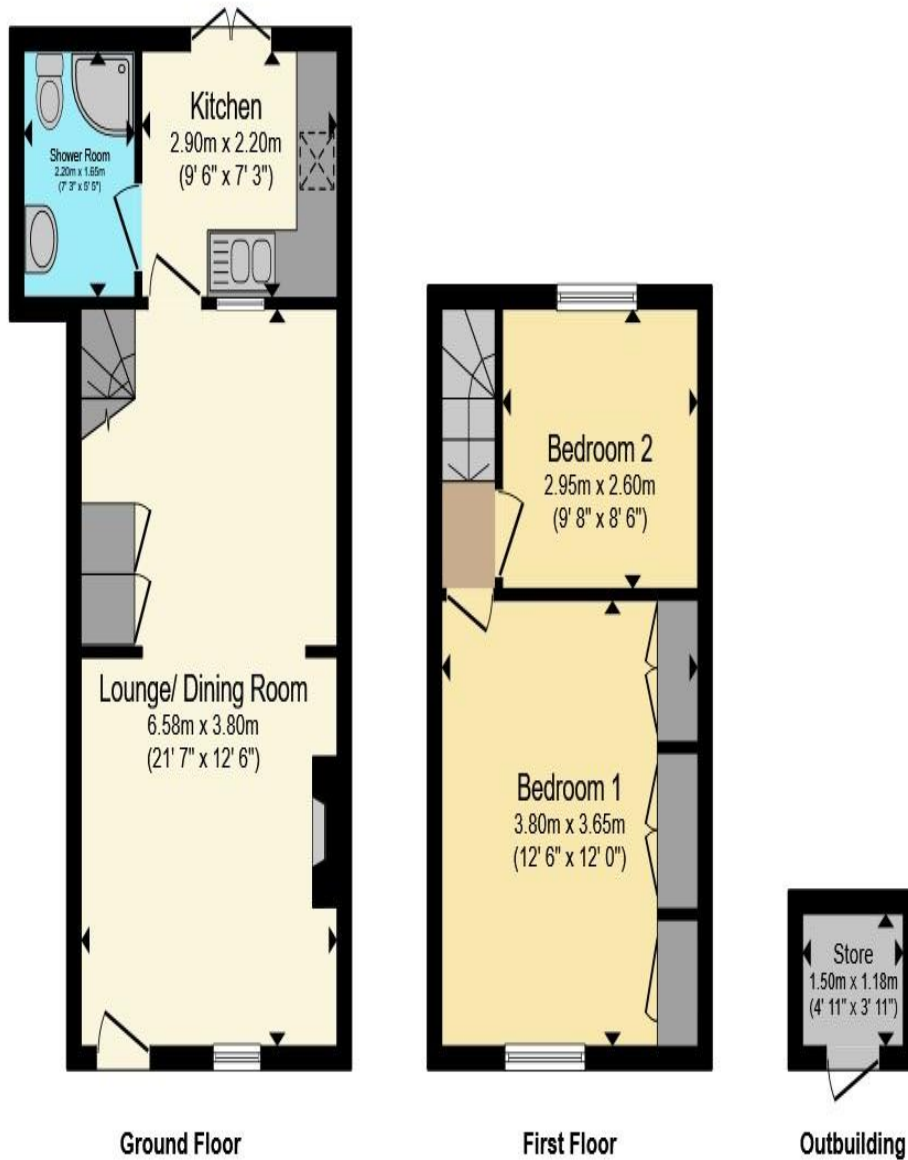
Bedroom Two

2.60m x 2.93m (8'6" x 9'7"), Window to rear aspect, electric panel, radiator.

Outside

To the front, the cottage overlooks the river Welland and to the rear the private enclosed and landscaped garden offers privacy with paved patio area with steps leading to a lawned area with a combination of shrubs plants and trees. An outhouse with power supply provides storage and the garden is enclosed with a timber fence and stonewall surround with side gate access.





Total floor area 62.4 m² (672 sq.ft.) approx

This floor plan is for illustrative purposes only. It is not drawn to scale. Any measurements, floor areas (including any total floor area), openings and orientation are approximate. No details are guaranteed, they cannot be relied upon for any purpose and they do not form part of any agreement. No liability is taken for any error, omission or misstatement. A party must rely upon its own inspection(s). Powered by www.propertybox.io

Sharman
Quinney

To view this property call Sharman Quinney on:
01778 343322

Selling your property?

Contact us to arrange a **FREE** home valuation.

 01778 343322

 25 Market Place, Market Deeping,
PETERBOROUGH, Cambridgeshire, PE6 8EA

 marketdeeping@sharmanquinney.co.uk

 www.sharmanquinney.co.uk



 SCAN ME



Sharman Quinney Holdings Limited is registered in England and Wales under company number 4174227, Registered Office is Cumbria House, 16-20 Hockliffe Street, Leighton Buzzard, Bedfordshire, LU7 1GN. VAT Registration Number is 500 2481 05.

1: These particulars do not constitute part or all of an offer or contract. 2: The measurements indicated are supplied for guidance only and as such must be considered incorrect. 3: Potential buyers are advised to recheck the measurements before committing to any expense. 4: Sharman Quinney has not tested any apparatus, equipment, fixtures, fittings or services and it is the buyers interests to check the working condition of any appliances. 5: Sharman Quinney has not sought to verify the legal title of the property and buyers must obtain verification from their legal representative. 6: Intending purchasers will be asked to produce identification documentation at a later stage and we would ask your co-operation in order that there will be no delay in agreeing the sale. Ref: MRD204563 - 0001

