



Shepherds Hill, N6

£925,000

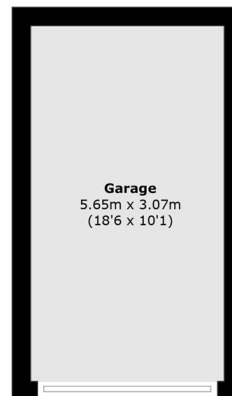
An outstanding, stylishly presented two double bedroom, two bathroom apartment located to the rear of this popular block, featuring an impressive 40ft south facing terrace ideal for entertainment.

Placed at the upper end of Shepherds Hill and therefore just 0.25 of a mile to Highgate tube, the vast selection of shops at Crouch End Broadway together with Highgate Village are within a mile.

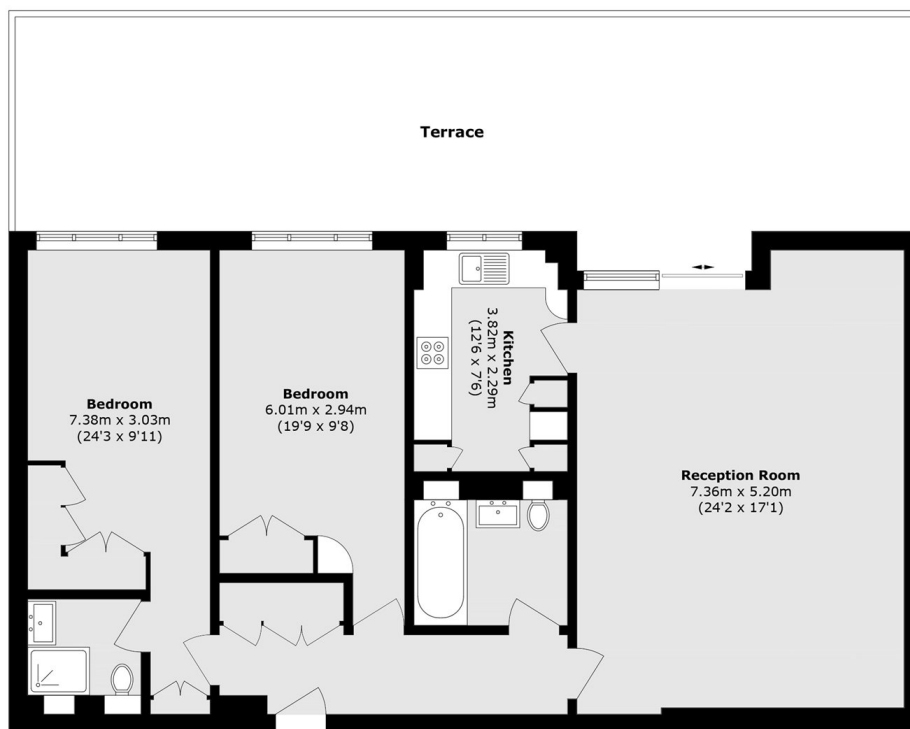
Features

- Two Double Bedrooms
- Separate Modern Kitchen
- Reception Room
- Two Modern Bathrooms
- South Facing Terrace
- Garage

Shepherds Hill, London, N6



Outbuilding
(Not Shown In Actual Location / Orientation)



Total area (approx.): 100.6 sq. m (1082.8 sq. ft)

Terrace area (approx.): 49.7 sq. m (534.9 sq. ft)

Garage area (approx.): 17.3 sq. m (186.2 sq. ft)