



382 Green Farm Beach Road

Scratby, NR29 3NW

£25,000



382 Green Farm Beach

Scratby, NR29 3NW

Aldreds are pleased to offer this very well presented and well equipped end terraced holiday chalet on this popular coastal village site. The property is sold with fixtures and fittings, furnished, and offers a covered entrance porch, living room, kitchenette, two bedrooms, shower room, communal gardens and close by parking. The property also benefits from double glazed windows and faces a westerly direction and is close to on site facilities.

Covered Entrance Porch

Double glazed French doors to front aspect, built in store, part double glazed pvc entrance door to:

Living Room

11'8" x 11'5" (3.58 x 3.48)

Double glazed window to front aspect, meter cupboard with fuse box and meter, tv point and tv, table and chairs, two 2 seater sofas, wood effect laminate flooring, wall mount tv point, open access to:

Kitchenette

8'0" x 5'4" (2.44 x 1.65)

Fitted kitchen with Wood effect wall and matching base units with work surface over and inset single drainer sink unit, part tiled walls, double glazed window to rear aspect, built in electric oven and hob, wood effect laminate flooring, fridge, built in airing cupboard housing the hot water heater with washing machine below.

Bedroom 1

8'0" x 7'6" (2.44 x 2.31)

Plus built in wardrobe cupboard, double glazed window, double bed, bedside cabinets, wood effect laminate flooring.

Inner Lobby

Wood effect laminate flooring, doors leading off to:

Bedroom 2

7'8" x 7'3" (2.36 x 2.21)

Plus built in wardrobe cupboard, double glazed window to rear aspect, electric heater, triple bunk bed, wood effect laminate flooring.





Shower Room

Corner quadrant tiled shower cubicle with electric shower fitting, vanity unit with inset wash basin, low level wc with concealed cistern, tiled walls and flooring, frosted double glazed window to rear aspect, extractor fan.

Outside

The chalet faces a westerly direction and immediately in front of the chalet are the communal lawned gardens. Located close by is communal parking.

Tenure

Leasehold.

84 Years from 1st April 1988

Site fees for 2052 = approximately £3,000 (tbc)

Site open 1 March - 31 October

Dogs allowed

Swimming pool on site.

Council Tax

Great Yarmouth Borough Council - Band 'A'

Location

California, Scratby is a coastal village approximately 5 miles north of Great Yarmouth. It has a Sandy beach backed by cliffs * Garden centre with general provisions store * First, Middle and High Schools are available in neighbouring village of Caister on Sea. Local bus services operate between the coastal villages and Great Yarmouth.

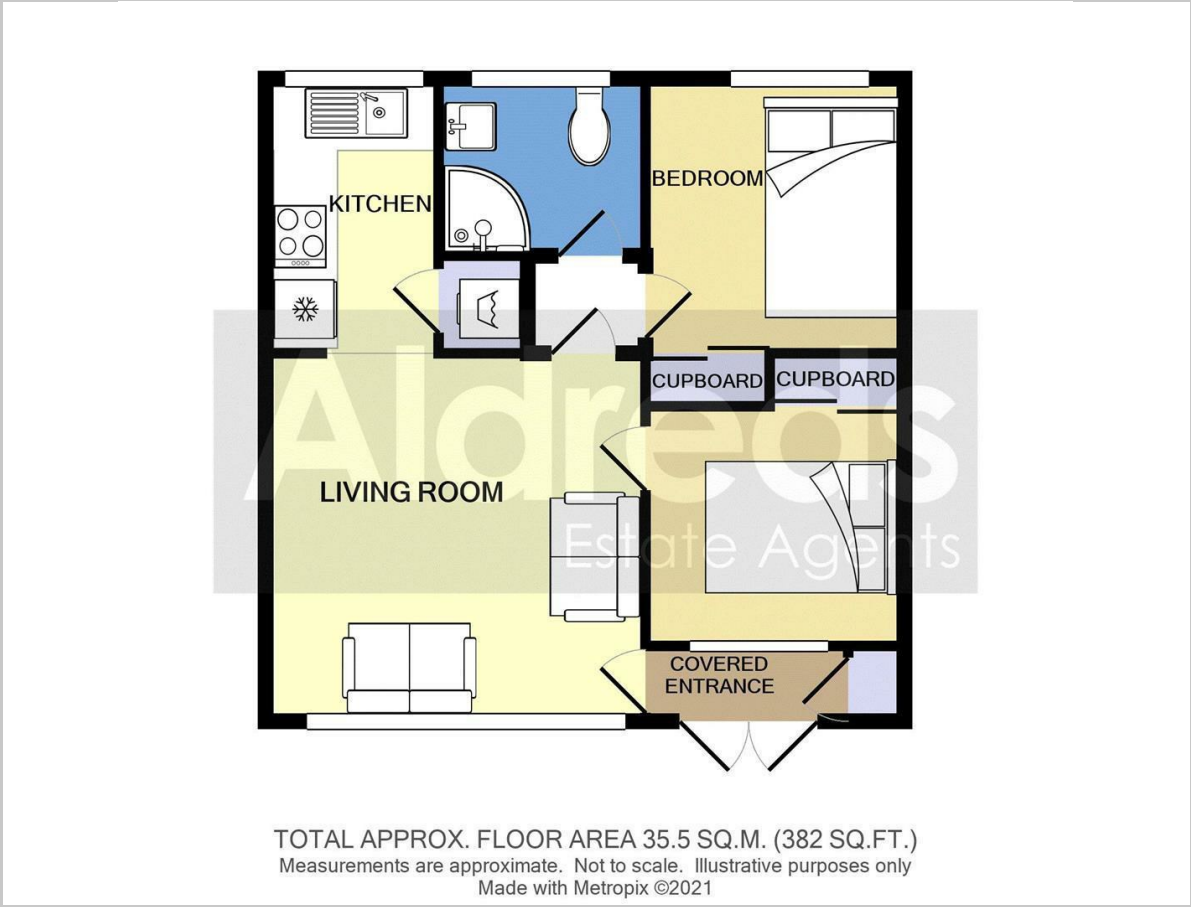
Directions

From the Yarmouth office head north along the A149 Caister road, continue past the Yarmouth Stadium, at the roundabout turn left onto the Caister Bypass, continue over the next roundabout into Jack Chase Way, continue over the roundabout into Scratby Road, turn right into California Road where California Sands Estate can be found on the left hand side. Turn in to the site and follow through the site passing the swimming pool and continue round the left hand bend and at the bottom bear left and the chalet can be found in the block on the right.

Ref: Y12481



Floor Plan

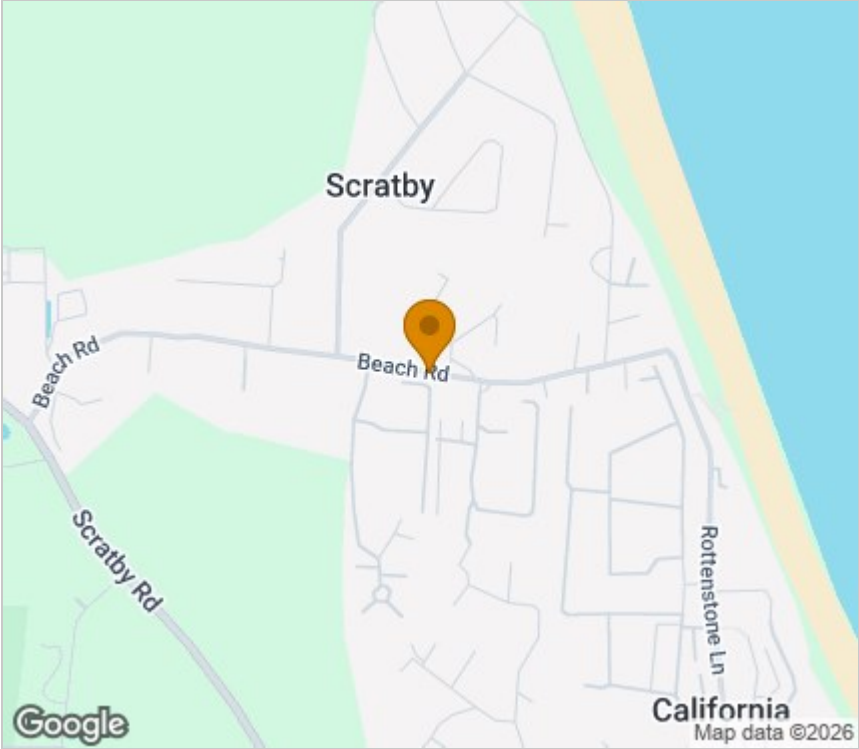


Viewing

Please contact our Aldreds Great Yarmouth Office on 01493 844891 if you wish to arrange a viewing appointment for this property or require further information.

Disclaimer
These particulars are issued on an understanding that all negotiations shall be conducted through Messrs. Aldreds. Please note: Messrs. Aldreds for themselves and for the vendors or lessors of this property whose agents they are given notice that: 1. Particulars are set out as a general outline only for guidance of intending purchasers or lessees, and do not constitute nor constitute part of, an offer or contract. 2. All descriptions, dimensions, references to condition and necessary permissions for use and occupation, and other details are given without responsibility and any intending purchasers or tenants should not rely on them as statements or representations of fact but must satisfy themselves by inspection or otherwise as to the correctness of each of them. 3. No person in the employment of Messrs. Aldreds has any authority to make or give any representation or warranty whatever in relation to this property. 4. If you are proposing to visit the property and are travelling some distance please check with Aldreds on the issue of availability prior to travelling. 5. Aldreds Property Consultants and associated services may offer additional services to the prospective purchaser for which they will be entitled to receive a commission.
Aldreds are pleased to be working with Mortgage Advice Bureau. They're an award-winning mortgage broker with over 1,400 advisers across the UK, and have access to over 12,000 mortgage products from over 90 lenders. Aldreds Estate Agents Ltd receive a commission of £200 on each completed case. Your home may be repossessed if you do not keep up repayments on your mortgage. There may be a fee for mortgage advice. The actual amount you pay will depend upon your circumstances. The fee is up to 1%, but a typical fee is 0.3% of the amount borrowed. Mortgage Advice Bureau is a trading name of Mortgage Seeker Limited which is an appointed representative of Mortgage Advice Bureau Limited and Mortgage Advice Bureau (Derby) Limited which are authorised and regulated by the Financial Conduct Authority. Mortgage Seeker Limited Registered Office: Lovewell Blake, Sixty Six North Quay, Great Yarmouth, Norfolk, NR30 1HE. Registered in England Number: 03721415. 6. Potential purchasers should check with their providers that the broadband and mobile phone coverage they would require is available.

Area Map



Energy Efficiency Graph

