

# DALGARNO GARDENS, W10





## Dalgarno Gardens, W10

A charming, terraced family house nestled on quiet street in North Kensington. This three-bedroom house, arranged on two floors only, offers spacious entertaining space and scope to extend into the loft (subject to planning permission). The well-established garden has a southerly aspect with direct access from the kitchen. Dalgarno Gardens is within walking distance of the shops, restaurants and transport links in and around North Kensington, Ladbrooke Grove, Portobello Road and Golborne Road. The wide open spaces of Little Scrubs and Wormwood Scrubs are just a stone's throw away. Westfield Shopping Centre is also within walking distance, as is White City underground station on the Central Line.





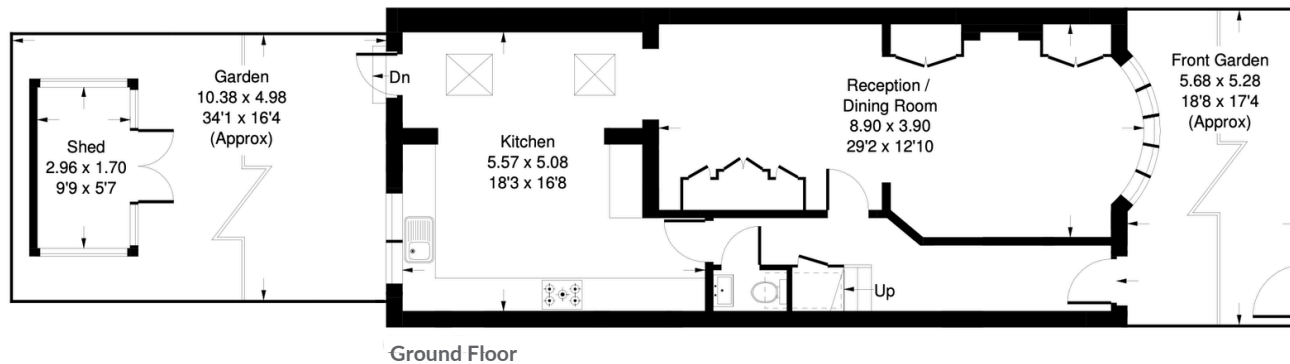
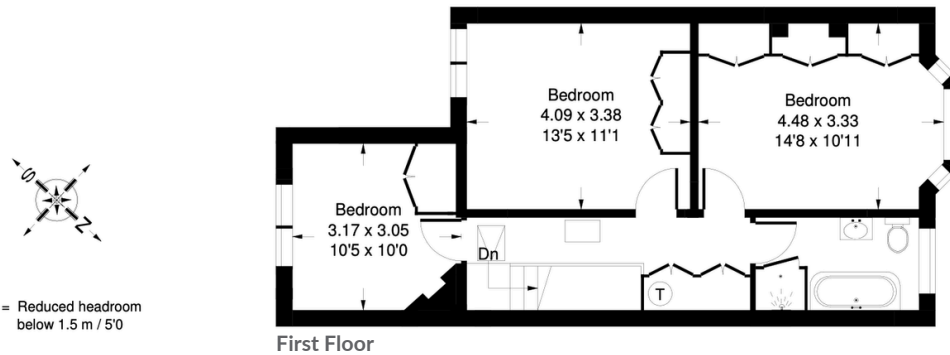




# Dalgarno Gardens, W10 - Freehold

Local Authority - Royal Borough of Kensington & Chelsea

Approx. Gross Internal Area = 122.8 sq m / 1322 sq ft  
Shed = 5 sq m / 54 sq ft  
Total = 127.8 sq m / 1376 sq ft



- Three bedrooms
- Double reception room
- Kitchen dining room
- Southerly facing garden
- EPC rating: C
- Council tax band: E



Whilst every attempt has been made to ensure the accuracy of the floor plan, measurements are approximate and not to scale. No guarantee is given on the total square footage of the property quoted on the plan. Figures given are for guidance. Plan is for illustration purposes only, not to be used for valuations.