



BEAUFORT GREEN



New Kings Road, SW6

£575,000



A two double-bedroom, two bathroom period conversion on the first floor of this period conversion. The property is set in the heart of Parsons Green and offers lateral living space with close proximity to amenities and transport links.



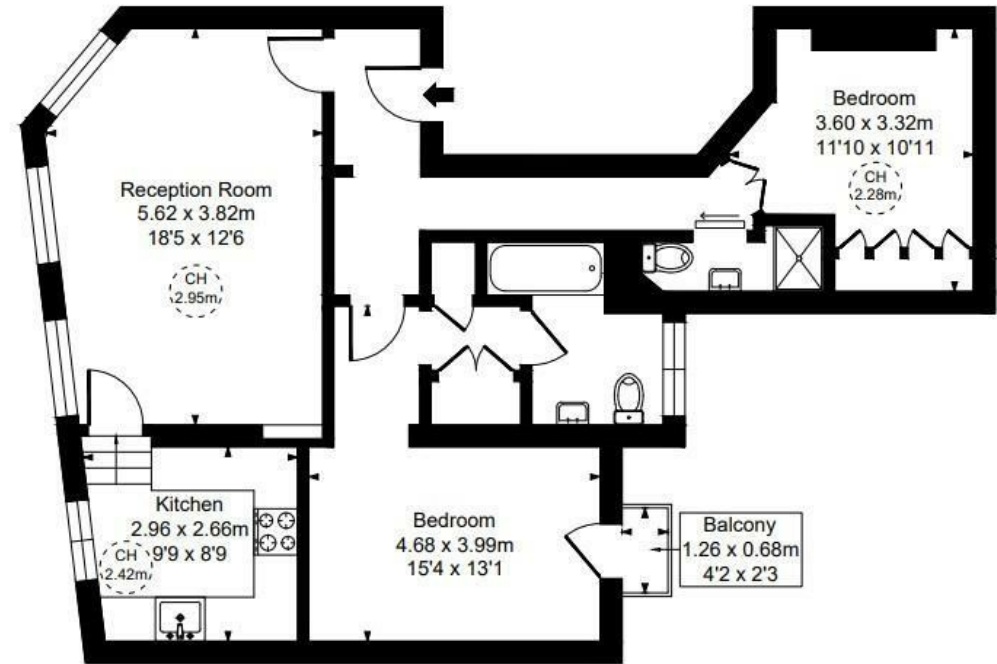


BEAUFORT GREEN



BEAUFORT GREEN

New Kings Road, SW6
Approximate Gross Internal Area
70.99 sq m / 764 sq ft
(CH = Ceiling Heights)



First Floor

At a Glance.

- Two Double Bedrooms
- First Floor Period Conversion
- Share of Freehold
- Two Bathrooms
- Close to Amenities and Transport Links
- Separate Kitchen Living Room

This plan is not to scale. It is for guidance and not for valuation purposes.
All measurements and areas are approximate only, and have been prepared in accordance with the current edition of the RICS Code of Measuring Practice.

BEAUFORT GREEN

02074594100

charlie@beaufortgreen.co.uk

263 New Kings Road
London
SW16 1DB