



## Carriage Grove, Bootle, Liverpool

£750 Per Month

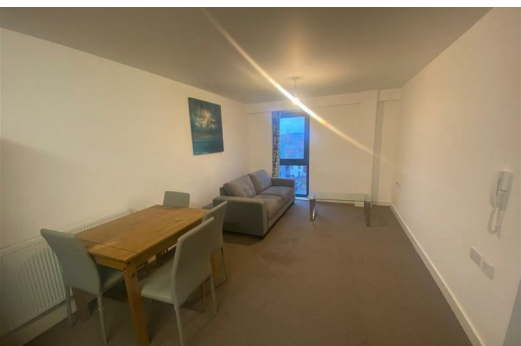
Ascend are pleased to offer for rent this modern two bedroom apartment.

A magnificent 2 bedroom newly renovated Apartment in a wonderful location, situated in Liverpool L20, offering amazing comfortable living and convenience with simplicity.

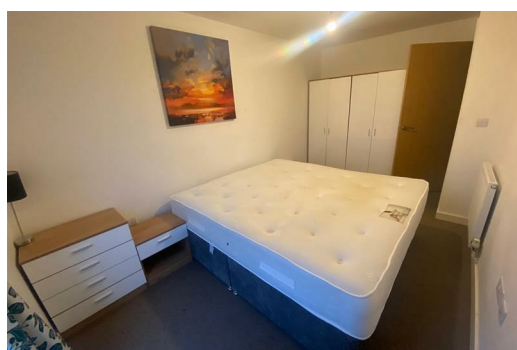
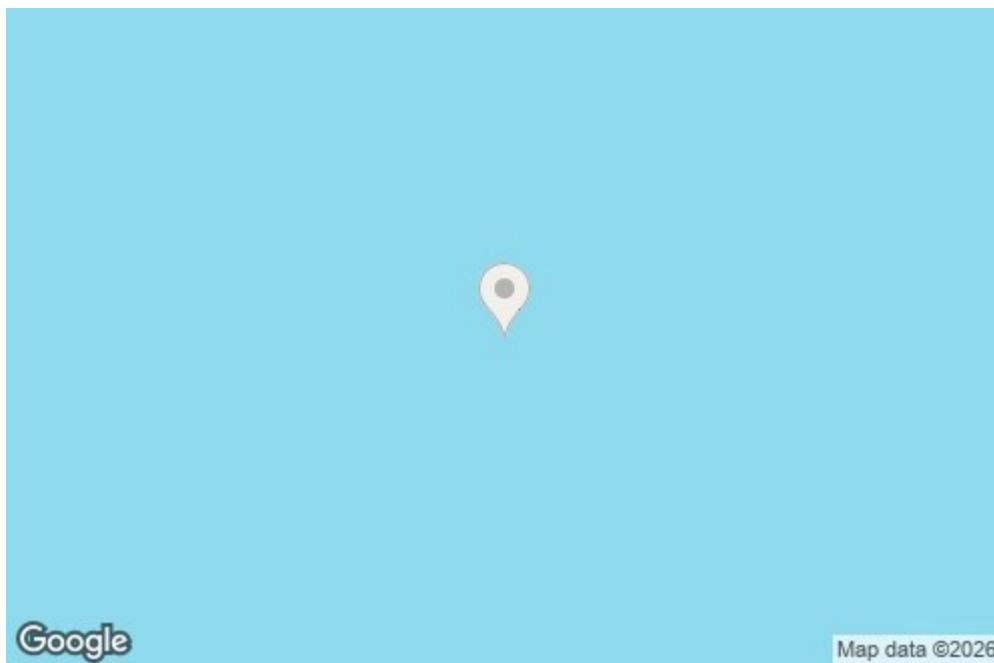
The Apartment is presented in outstanding condition and fitted with all the basic facilities like: Close to public transport, Communal Garden, Double glazing, Fitted Kitchen, Fully furnished to high spec, Intercom entry system.

Bills are not included in rental price.

\*Images are for marketing purposes only\*\*



9B Wishing Well Carriage Grove, Bootle, Liverpool, L20 3JF



Energy Efficiency Rating		Environmental Impact (CO <sub>2</sub> ) Rating	
Current	Potential	Current	Potential
100-109 kWh/m <sup>2</sup> (A)	100-109 kWh/m <sup>2</sup> (A)	100-109 g/m <sup>2</sup> (A)	100-109 g/m <sup>2</sup> (A)
81-100 kWh/m <sup>2</sup> (B)	81-100 kWh/m <sup>2</sup> (B)	110-129 g/m <sup>2</sup> (B)	110-129 g/m <sup>2</sup> (B)
61-80 kWh/m <sup>2</sup> (C)	61-80 kWh/m <sup>2</sup> (C)	130-149 g/m <sup>2</sup> (C)	130-149 g/m <sup>2</sup> (C)
41-60 kWh/m <sup>2</sup> (D)	41-60 kWh/m <sup>2</sup> (D)	150-179 g/m <sup>2</sup> (D)	150-179 g/m <sup>2</sup> (D)
21-40 kWh/m <sup>2</sup> (E)	21-40 kWh/m <sup>2</sup> (E)	180-209 g/m <sup>2</sup> (E)	180-209 g/m <sup>2</sup> (E)
1-20 kWh/m <sup>2</sup> (F)	1-20 kWh/m <sup>2</sup> (F)	210-239 g/m <sup>2</sup> (F)	210-239 g/m <sup>2</sup> (F)
0-20 kWh/m <sup>2</sup> (G)	0-20 kWh/m <sup>2</sup> (G)	240-279 g/m <sup>2</sup> (G)	240-279 g/m <sup>2</sup> (G)