



**CLIVEPEARCE**  
Now you're moving

4 Bedrooms

House - Detached

Asking Price

£499,950

Located in

Chacewater



[www.clivepearceproperty.com](http://www.clivepearceproperty.com)



Chacewater | | TR4 8PH



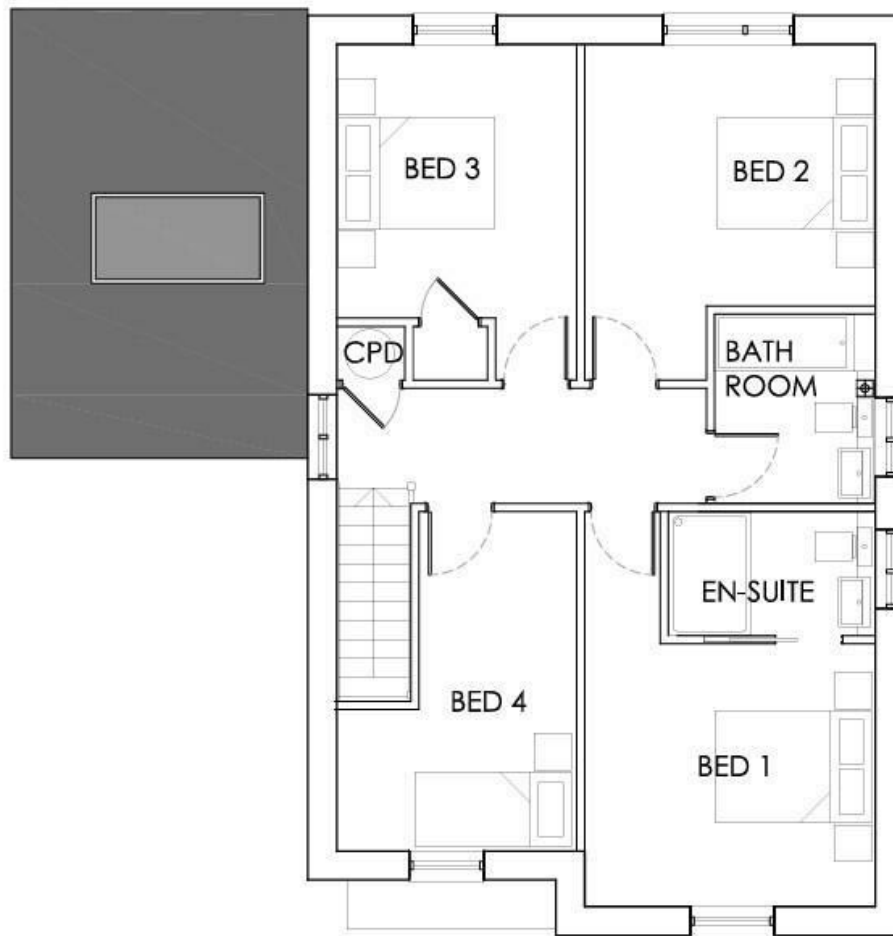
A brand new four bedroom detached energy efficient family house with exceptional rural views and conveniently located between Chiverton Cross and Threemilestone. Spacious double garage with electric door and EV charging plus driveway parking. Enclosed sunny rear garden with lawn, patio and views. Air source under floor heating and double glazing.



£499,950 Freehold



- Brand new house
- Superb rural views
- Energy efficient design
- Double garage with electric door and EV charging
- Enclosed sunny garden
- Four bedrooms
- NO ONWARD CHAIN
- Air source underfloor heating
- Driveway parking
- Opportunity to choose finishes if reserved early



## FIRST FLOOR

## Council Tax Band New Build

## Local Authority

Agents Note: Whilst every care has been taken to prepare these particulars, they are for guidance purposes only. All measurements are approximate and are for general guidance purposes only and whilst every care has been taken to ensure their accuracy, they should not be relied upon and potential buyers/tenants are advised to recheck the measurements.

31 Lemon Street

Truro

Cornwall

TR1 2LS



**CLIVEPEARCE**  
Now you're moving

hello@clivepearceproperty.com

01872 272622

www.clivepearceproperty.com