



Flat J, 6 Welch Way, Witney

In Excess of £180,000



Flat J

Brought to market with no onward chain is this modern two-bedroom second-floor apartment situated in Witney town centre.

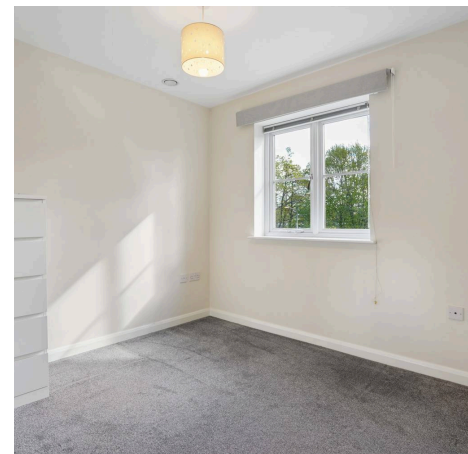
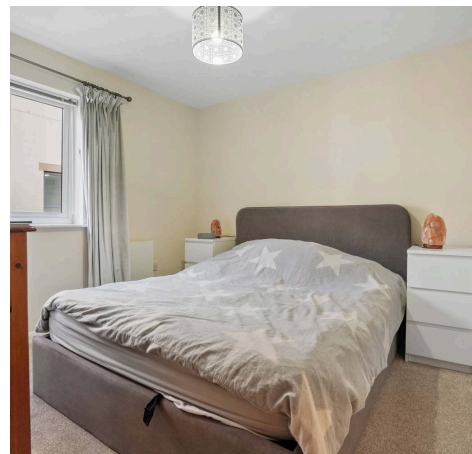
Council Tax band: C

Tenure: Leasehold

EPC Energy Efficiency Rating: C

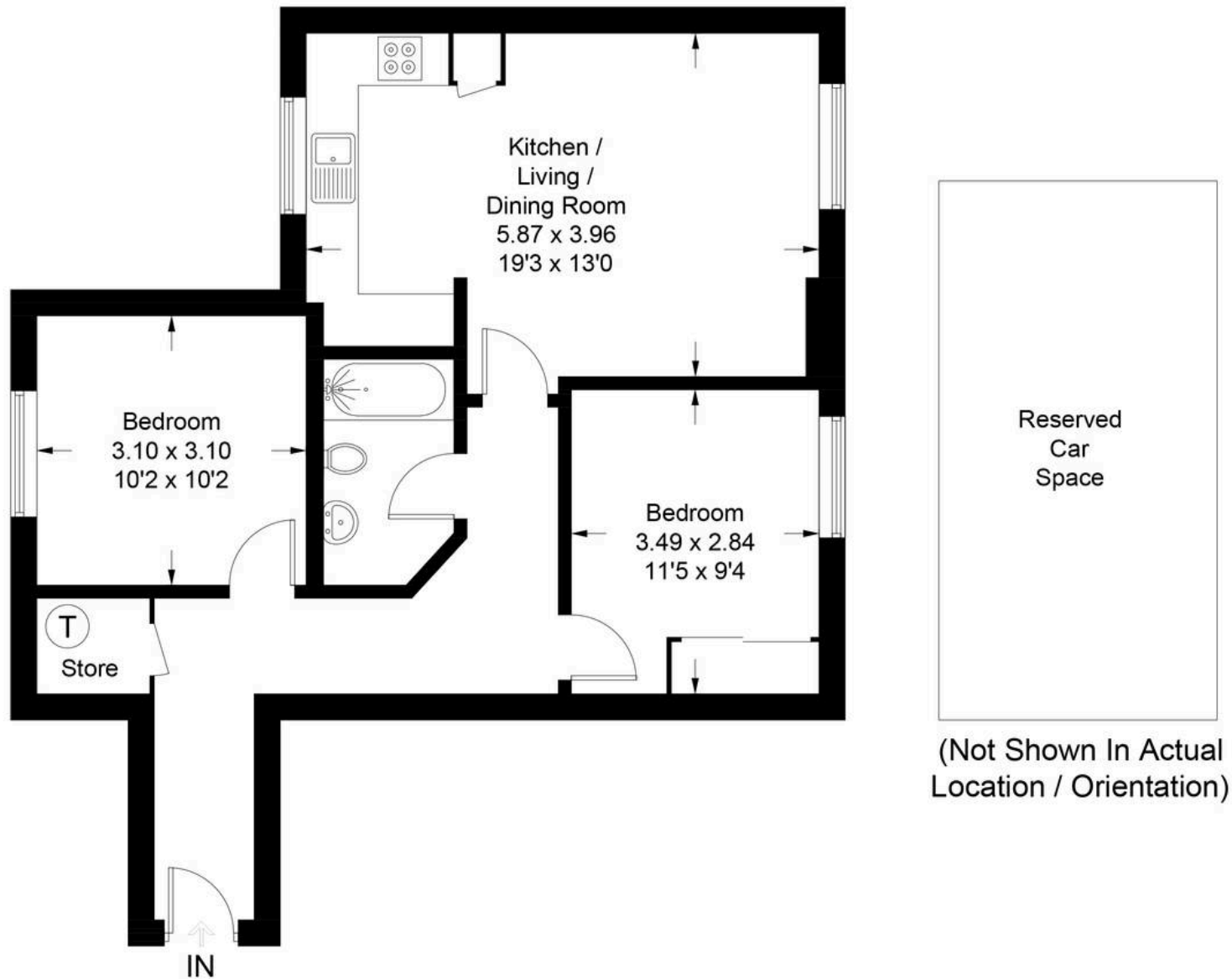
EPC Environmental Impact Rating: C

- Brought to market with no onward chain.
- A modern two-bedroom second-floor apartment situated in Witney town centre.
- Carport.
- Two double bedrooms.
- Open plan kitchen/dining/living room.
- Bathroom with bath and shower over.



Welch Way - Witney

Approximate Gross Internal Area = 61.4 sq m / 661 sq ft



(Not Shown In Actual Location / Orientation)

Illustration for identification purposes only, measurements are approximate, not to scale. Fourlabs.co © (ID1289283)



Simpsons Witney Branch

4 Langdale Court Witney, Oxfordshire - OX28 6AD

01993 835030 • witney@simpsonsproperty.com • www.simpsonsproperty.com/