

first for homes

first for property in life - [firstforhomes.co.uk](https://www.firstforhomes.co.uk)

Contact Allan England's Team

01592 752 944



Loyne Court, Glenrothes

Offers over £164,995

Loyne Court, Glenrothes

Beautifully Presented 2 Bedroom Semi-Detached Villa With Driveway & Timber Garage, Situated Within A Highly Sought-After Location North of Glenrothes!

Allan England's Award-Winning Team at First for Homes are proud to present to the market this fantastic first time buyers home, beautifully presented throughout, 2-bedroom semi-detached villa situated within the highly desirable area of Pitcairn, North of Glenrothes. This modern move in condition family home offers on the ground floor level: entrance hallway, inviting lounge, brand new kitchen/diner in 2024 with integrated fridge freezer, washing machine, oven, hob and wine cooler. Stairs to the upper level offer 2 well proportioned bedrooms with built in storage and modern family shower room with rain shower. Externally there are garden grounds to the front with a driveway for 2 cars leading to a timber single garage and a private landscaped rear garden with decking and lawn area. Viewing is essential to fully appreciate all this fantastic home has to offer.

EPC Rating- C
Council Tax Band- D
Home Report- £170,000

Don't miss out, call first for homes - first for trust... first for service... first for aftercare.

Glenrothes is regarded as one of the most successful Towns in Scotland with a wealth of local amenities including Kingdom Shopping Centre as well as sport and leisure at Michael Woods and a multi-screen cinema. Glenrothes boasts its very own 18-hole Golf course and both Primary and Secondary schooling are available. For the commuter the A92 allows swift access to Edinburgh and there are railway stations at both Thornton and Markinch.





SITUATION – Glenrothes

ENTRANCE HALLWAY

LOUNGE

12'5" x 11'8" (approx) (3.80m x 3.58m (approx))

OPEN PLAN KITCHEN/ DINER

14'11" x 8'4" (approx) (4.57m x 2.55m (approx))

STAIRS TO UPPER LEVEL

BEDROOM 1

11'10" x 9'3" (approx) (3.62m x 2.82m (approx))

BEDROOM 2

9'8" x 8'6" (approx) (2.97m x 2.61m (approx))

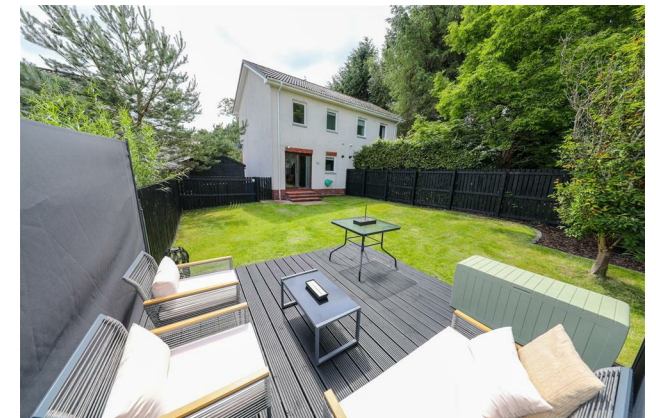
FAMILY SHOWER ROOM

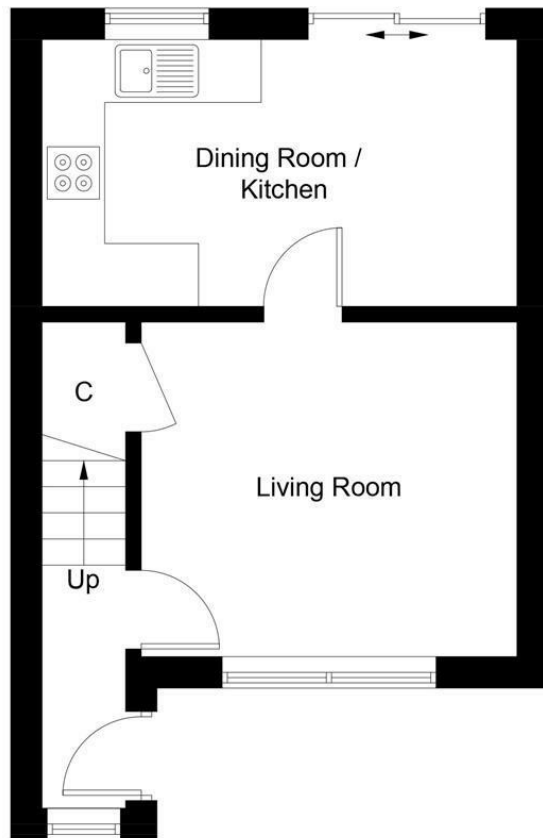
DRIVEWAY TO SIDE

TIMBER SINGLE GARAGE

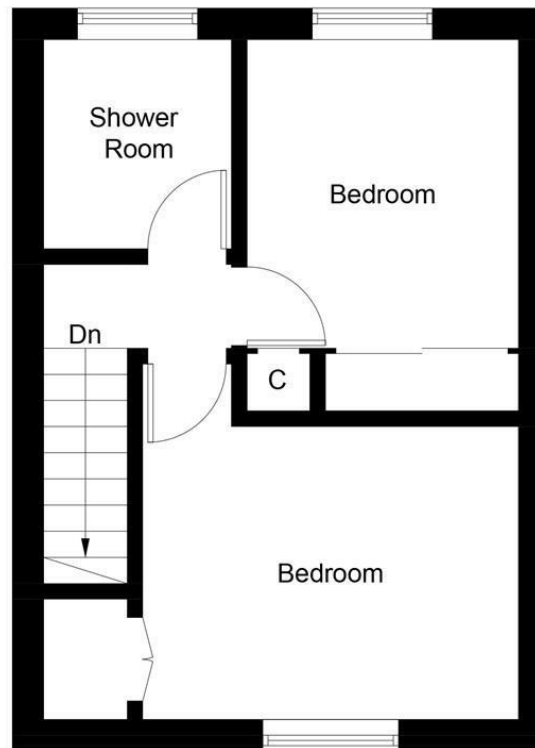
LANDSCAPED REAR GARDENS

INFORMATION





Ground Floor



First Floor

Illustration for identification purposes only, measurements are approximate, not to scale. Fourlabs.co © (ID1317029)

Information

These particulars are prepared on the basis of information provided by our clients. We have not tested the electrical system or any electrical appliances, nor where applicable, any central heating system. All sizes are recorded by electronic tape measurement to give an indicative, approximate size only. Prospective purchasers should make their own enquiries – no warranty is given or implied. This schedule is not intended to, and does not form any contract.

FREE Valuation

Selling Your Home?

Choose first for homes - a highly experienced estate agency team you can trust to sell your home at the highest possible price. Offering fantastic savings on selling fees, with no compromise on service, free professional photography highlighting your home in its best light, first for homes will be your first choice. Contact us today to arrange your appointment.



first for trust



first for service



first for aftercare

first for homes
first for property in life - firstforhomes.co.uk

Contact Allan England's Team
01592 752 944

32 North Street, Glenrothes, Fife KY7 5NA
Fax: 01592 807947
sales@firstforhomes.co.uk
www.firstforhomes.co.uk