



Wakehurst Road, SW11

£1,400,000



Wakehurst Road, SW11

This stunning four bedroom, end of terrace house, situated 'between the commons', features a double reception room, kitchen and dining room. The property contains a multitude of extra storage space and a beautiful south facing garden.

Upon entering the main hallway, you are greeted on the right by a spacious double reception room featuring two ornate fireplaces. Continuing straight through the hallway, you arrive at the kitchen with an adjoining dining room, ideal for entertaining. To the rear of the property is a beautifully landscaped, south-facing garden.

Ascending to the second floor you will find three of the bedrooms, with the principle bedroom featuring an abundance of natural light and space. Taking the spiral staircase up to the top of the property, you will find the fourth and final bedroom, with its own en suite bathroom. You will also find cellar underneath the stairs, perfect for any storage needs.

Wakehurst Road is situated between Clapham Common and Wandsworth Common. Clapham Junction station is just a short walk away. The vibrant Northcote Road is a few steps away, as are a number of excellent state and private schools.

Features

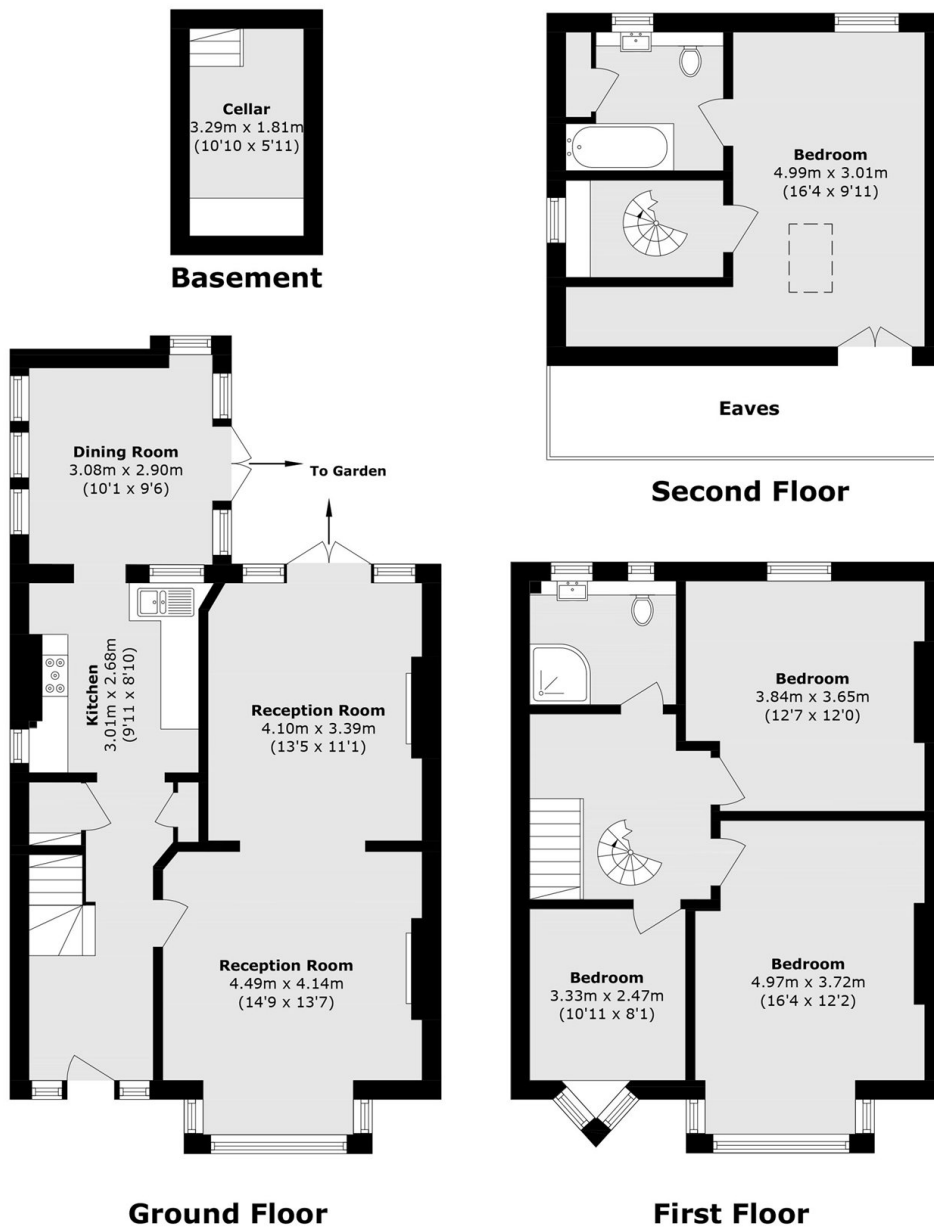
- Four Bedroom
- Double Reception
- Kitchen and Dining
- Two Bathrooms
- Basement
- Beautiful Garden







Wakehurst Road, London, SW11



Total area (approx.): 147.5 sq. m (1587.6 sq. ft)
(Excluding Eaves)