



**Guide Price**  
**£400,000**

**Freehold**

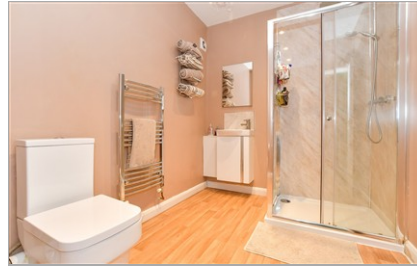
3x  2x  2x 

**Bridewell Park,  
Whitstable, Kent, CT5**

**OVER 60?**

Secure this property  
for up to **59% less!**

*Wards*  
Helping you move forwards



## Main features

- **Garage converted into a home office and shower room**
- **Replaced doors and windows throughout in the last 2-3 years, under warranty**
- **Peaceful residential cul-de-sac, a short walk from Whitstable train station**
- **Private rear garden with grass lawn and composite decking**
- **New gas fired boiler, less than 2 years old**

## Accommodation

### GROUND FLOOR

Hallway  
 Study: 11'0 x 8'1 (3.36m x 2.47m)  
 Shower Room  
 Kitchen: 13'0 x 8'8 (3.97m x 2.64m)  
 Lounge/Diner: 21'7 x 11'4 (6.58m x 3.46m)

### FIRST FLOOR

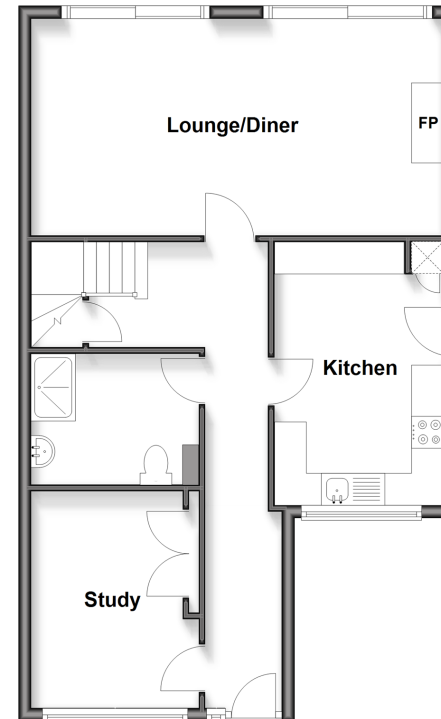
Landing  
 Bathroom  
 Separate WC  
 Bedroom 1: 12'5 x 11'1 (3.79m x 3.38m)  
 Bedroom 2: 13'9 x 8'10 (4.19m x 2.69m)  
 Bedroom 3: 10'3 x 8'9 (3.13m x 2.67m)

### OUTSIDE

Driveway  
 Front Garden  
 Rear Garden

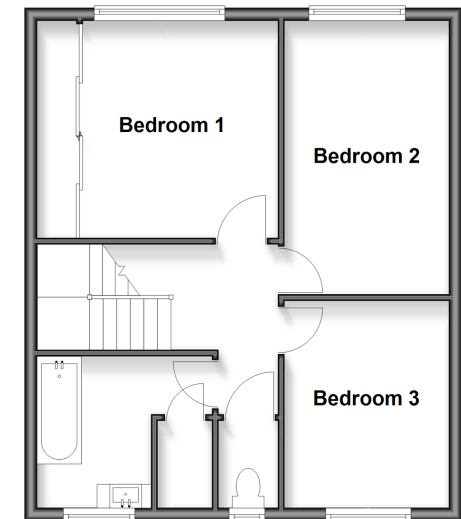
### Ground Floor

Approx. 61.9 sq. metres (666.5 sq. feet)



### First Floor

Approx. 49.4 sq. metres (531.5 sq. feet)



**Call Whitstable - 01227 772272 ■ [wardsokent.co.uk](http://wardsokent.co.uk)**

■ Legal advice should be taken to verify fixtures/fittings, planning, alterations and/or lease details  
 ■ Through a Homewise Home For Life Plan people aged 60+ can secure this property for up to 59% less, by purchasing a Lifetime Lease

■ Appliances & services are untested, dimensions are approximate and floor plans are not to scale



12033960/20260110/AR/NF