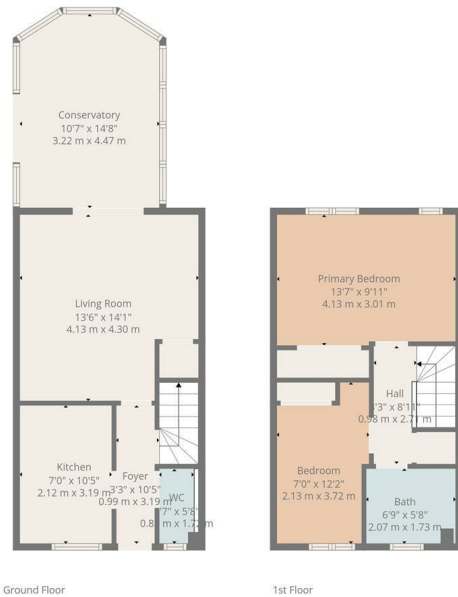




OFFERS OVER
£193,000
Buchanan Crescent
Livingston, EH54 7EF



TOTAL: 822 sq. ft, 76 m²
 Ground floor: 485 sq. ft, 45 m², 1st floor: 337 sq. ft, 31 m²
 EXCLUDED AREAS: WALLS: 97 sq. ft, 9 m²

Floor Plan Created By Cubicasa App. Measurements Deemed Highly Reliable But Not Guaranteed.



Energy Efficiency Rating		Current	Potential
Very energy efficient - lower running costs			
(92 plus)	A		
(81-91)	B		
(69-80)	C		
(55-68)	D		
(39-54)	E		
(21-38)	F		
(1-20)	G		
Not energy efficient - higher running costs			
Scotland		77	82
		EU Directive 2002/91/EC	

Agents Note: Whilst every care has been taken to prepare these particulars, they are for guidance purposes only. All measurements are approximate and are for general guidance purposes only and whilst every care has been taken to ensure their accuracy, they should not be relied upon and potential buyers/tenants are advised to recheck the measurements





HEMMINGS HOMES

OFFICE ADDRESS

8 Deer Park Avenue
Livingston
EH48 8AF

OFFICE DETAILS

01506 532422
enquiries@hemmingshomes.co.uk
hemmingshomes.co.uk