

# 4 Village Centre, £185,000\*

(Other charges apply)

RICHMOND  
VILLAGES

Part of Bupa

2F

1



1



EPC - B



## 1 bedroom second floor apartment

We are pleased to present this beautifully maintained one-bedroom apartment, ideally situated within the main village building and conveniently positioned close to the lift for easy access to all village amenities. The apartment benefits from close proximity to an excellent range of on-site facilities, including a restaurant, cinema, reception, library, Wellness Spa, and beautifully landscaped gardens and terraces.

### Specification

- Generously proportioned living room with electric flame-effect fireplace with decorative marble surround and underfloor heating.
- Modern fitted kitchenette with a range of wall and base units, stainless steel sink and drainer, and integrated under-counter fridge with freezer compartment.
- Spacious double bedroom with TV and telephone points with multiple power sockets.
- Modern en-suite shower room including shower, WC and washbasin.
- Welcoming entrance hall with double-door storage cupboard.
- TV and satellite points\*.
- Well stocked flower borders and lawns maintained by the Village Gardeners.
- Allocated parking space for one car.



\*Satellite subscription not included.

Important Notice: These particulars are intended to give a fair and substantially correct overall description. Other fees and charges apply, please contact the Village Advisers for further details. Properties are sold on a 125-year lease, which commenced in 2019.

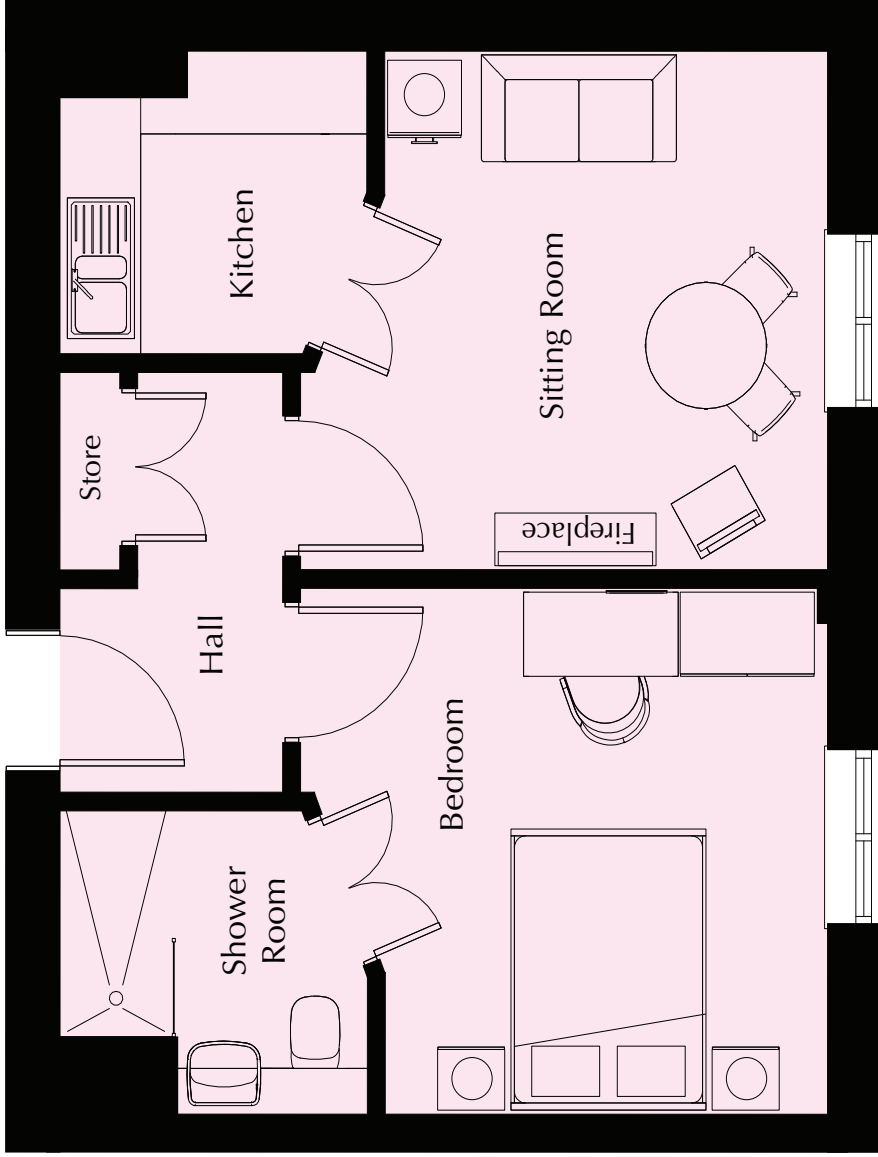
01386 862 222

woodnorton@richmond-villages.com

Richmond Villages Wood Norton,  
Evesham Road, Wood Norton, Evesham, Worcestershire WR11 4TY

# 4 Village Centre

## Second Floor



- Kitchen**  
2299mm x 2130mm  
7'7" x 7'
- Living Room**  
3940mm x 3667mm  
12'11" x 12'
- Bedroom**  
3940mm x 3731mm  
12'11" x 12'3"
- Shower Room**  
2300mm x 2215mm  
7'7" x 7'3"

These particulars are intended to give a fair and substantially correct overall description. Measurements have been taken at 1500mm skimming height. All dimensions are approximate. Bedroom measurements include the wardrobe if applicable. Room measurements include bay windows if applicable. Furniture layout is to give an indicative impression. Although all efforts have been made to ensure its accuracy at time of print dimensions, fixtures, fittings, finishes and specifications are subject to change without notice. The properties are sold unfurnished.

