



Southsea Avenue, Leigh-On-Sea

Price Guide £675,000

home.

149 Southsea Avenue

Leigh-On-Sea

SS9 2BH



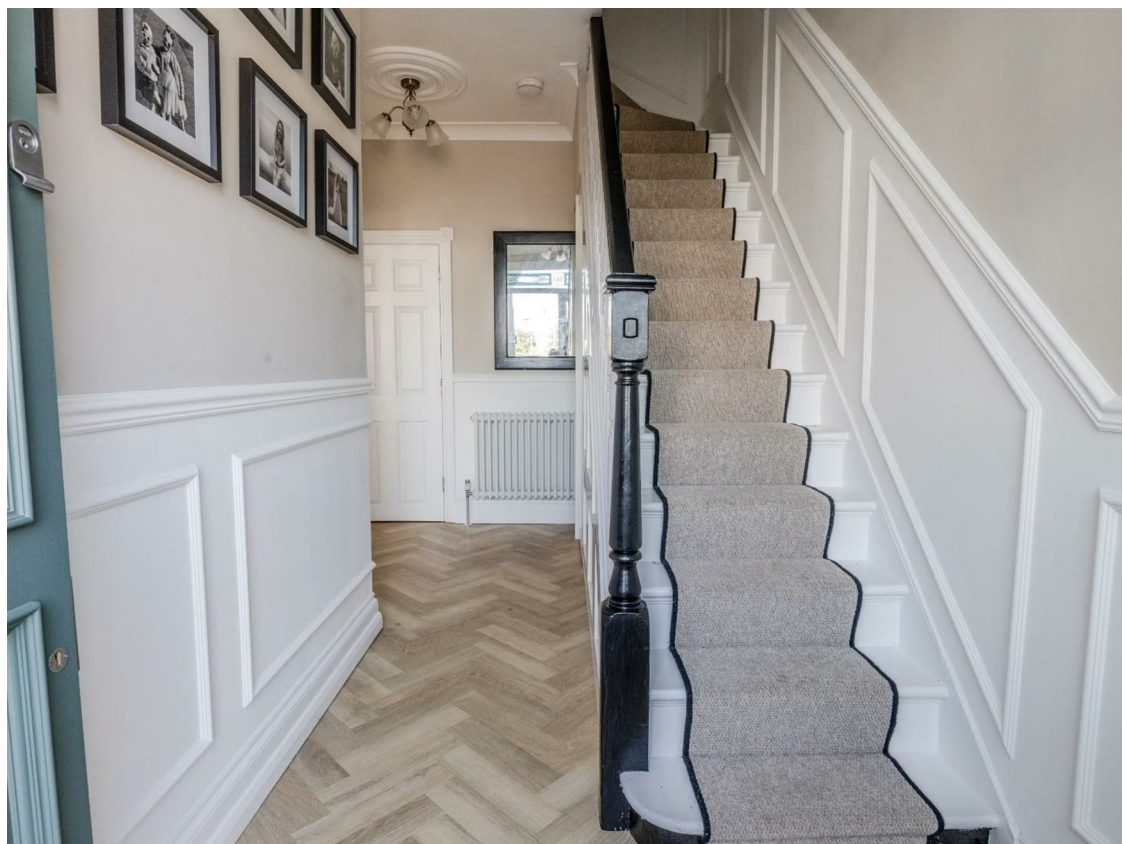
- Super Smart & Spacious Four Bedroom Terrace Home
- Welcoming Entrance Hall & Formal Lounge
- Stunning Open Plan Kitchen & Family Space With Bi-Folding Doors To Rear Garden
- Wonderful Master Bedroom With An En-Suite Shower Room
- South Of London Road
- Fabulous West Backing Rear Garden & Off Street Parking To The Front
- Perfectly Positioned For Leigh Broadway
- Within A Short Stroll Of The Old Town & Mainline Railway Station

Interested?

Give us a call or request a viewing below. Our team are always on-hand and willing to help you.

01702 480 033





*** Guide Price £675,000 - £700,000 ***

Home Of Leigh are very excited to offer for sale this super smart and surprisingly spacious four bedroom terraced house located south of the London Road and which benefits from a fabulous west backing rear garden and off street parking to the front.

The accommodation is cleverly spread out over three floors and boasts a welcoming entrance hall, ground floor guest cloakroom, utility room, formal lounge plus a stunning open plan kitchen & family space with bi folding doors opening out to the rear garden.

To the first floor there are three bedrooms and a spacious family bathroom, whilst to the second floor there is a wonderful master bedroom with an en suite shower room.

Located on Southsea Avenue in Leigh on Sea, this family home is perfectly positioned to take full advantage of being within walking distance of Leigh Broadway and its array of shops, bars, restaurants and cool boutiques, as well as being within a short stroll of the old town and mainline railway station offering direct access into London Fenchurch Street.

Accommodation Comprises

Double lead light doors leading to:

Entrance Hall

14'1 x 10'8 < 5'7

A great size entrance hall with Herringbone style flooring throughout, feature half panelling to surrounding walls, stairs leading to the first floor accommodation with understairs storage cupboard, coved to smooth plastered ceiling with two ceiling roses, cast iron effect radiator. Doors to:

Ground Floor Cloakroom

5'1 x 3'4

Modern two piece suite comprising; low level WC, wash hand basin with mixer tap and vanity cupboard beneath, half tiled to surrounding walls, tiled flooring, smooth plastered ceiling with inset spotlighting.

Lounge

14'5 x 12'6

Double glazed window to front aspect, carpeted, feature fireplace with bespoke fitted alcove storage cupboards to either side, coved to smooth plastered ceiling with central ceiling rose, radiator.

Open Plan Kitchen and Family Room

26'3 x 18'2 < 9'2

An incredible west facing open plan living space with double glazed bi-folding doors to the entire width of the rear accessing the garden and feature roof lantern. The kitchen is fitted to include a modern sink unit with mixer tap inset into a range of worksurfaces with an abundance of cupboards and drawers beneath, built-in Siemens oven and matching microwave, further integrated dishwasher and wine fridge, concealed boiler (n/t), Siemens four ring

electric hob with extractor hood above, Herringbone wood flooring throughout, smooth plastered ceiling with inset spotlighting, feature cast iron effect radiator, feature fireplace to snug area.

Utility Room

5'4 x 5'1

Appliance space and plumbing for washing machine, range of fitted matching base and eye level cupboards, wood flooring, smooth plastered ceiling with inset spotlighting.

First Floor Landing

8'4 x 7'4

Carpeted, smooth plastered ceiling, feature half panelling to surrounding walls, stairs leading to the second floor accommodation. Doors to:





Bedroom Two

14'5 x 10'11

Double glazed bay window to front aspect, carpeted, coved to smooth plastered ceiling with inset spotlighting, radiator.

Bedroom Three

12'3 x 11'2

Double glazed window to rear aspect, carpeted, smooth plastered ceiling, range of fitted wardrobes, radiator.

Bedroom Four

7'4 x 7'1

Double glazed window to front aspect, carpeted, coved to smooth plastered ceiling with inset spotlighting, radiator.

Family Bathroom

8'8 x 7'8

Double glazed obscure window to rear aspect. Modern suite comprising; panelled bath with mixer tap and shower attachment, low level WC, twin wash hand basins with mixer tap, coved to smooth plastered ceiling with inset spotlighting, tiled flooring, radiator.

Second Floor Master Bedroom

16'10 x 13'10 < 8'10

Two Velux windows to front and double glazed window to rear, carpeted, built-in eaves storage cupboard, smooth plastered ceiling with inset spotlighting. Door to:

En-Suite Shower Room

6'2 x 5'6

Double glazed obscure window to rear aspect. Modern three piece suite comprising; fully tiled walk-in shower, low level WC, wash hand basin with mixer tap, smooth plastered ceiling with inset spotlighting, tiled flooring, heated towel rail.

Externally:

Rear Garden:

The property benefits from a great size west backing rear garden which commences with an attractive paved patio area to the immediate rear with the remainder being laid to lawn and enclosed by screen panelled fencing, garden shed, outside lighting and water tap.

Front Garden:

The front of the property is paved providing off street parking for one vehicle.







COFFEE?

WINE?

WORK

MERLOT

OLIVE
YOU

WINE



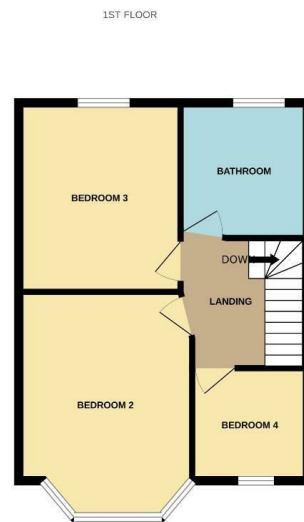
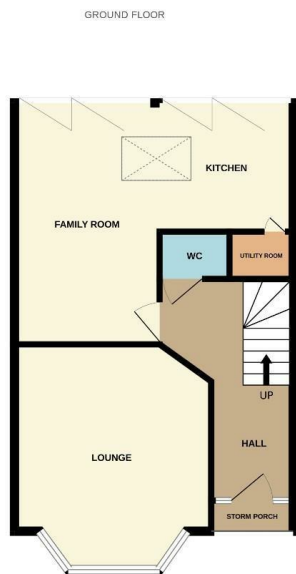


Property Details

4 Bedrooms
2 Bathrooms
2 Reception Rooms
House - Terraced

Approx. sq ft
EPC band: D
Tenure: Freehold
Council Tax Band: D

£675,000



Made with Metropix ©2026

Interested?

Give us a call or request a viewing below. Our team are always on-hand and willing to help you.

01702 480 033

home.



Scan QR code for
our Instagram

homeofleigh.com

The Old Bank, 26 Broadway
Leigh-on-Sea, SS9 1AW

01702 480 033

