



Lower Square, TW7

£425,000

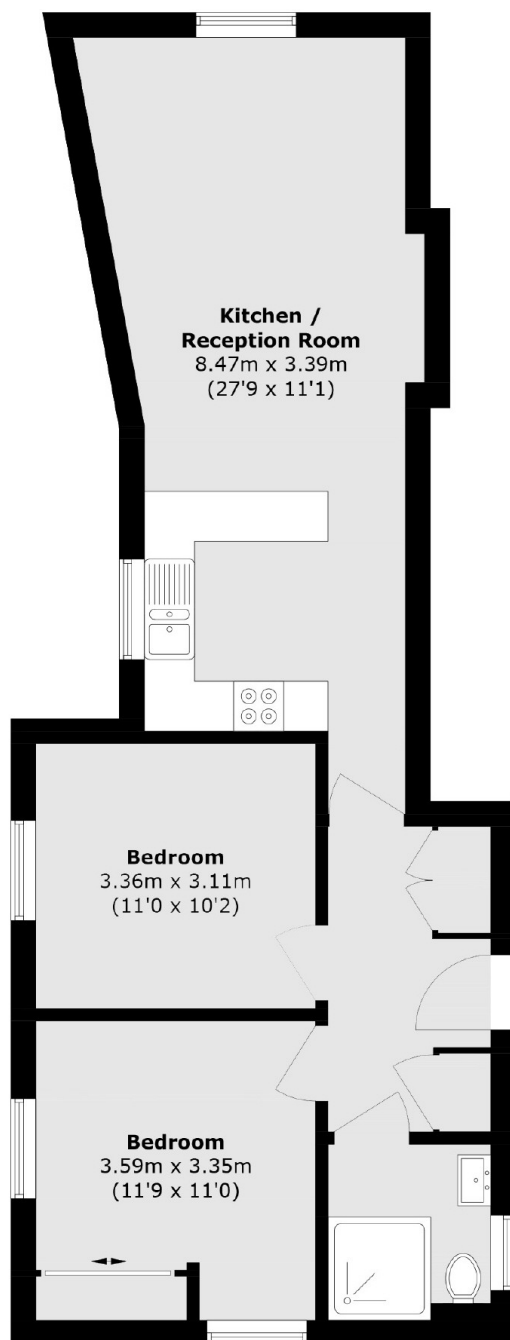
Located on the first floor of an impressive grade II listed period building, is this bright and spacious two double bedroom apartment. The property has a well designed and practical layout featuring an open-plan kitchen/reception area and a modern shower room. The dual aspect windows in the master bedroom flood the room with natural light enhancing the airy feel of this apartment and the built in wardrobes provide ample storage space. Further benefits include secure allocated off-street parking.

Lower Square is a quiet picturesque spot in Old Isleworth on the banks of the River Thames. The apartment is situated within 1.0 mile of St Margarets village with its boutique shops, cafes and train station which has direct links to London Waterloo. Redlees Park and Syon Park are close by.

Features

- Grade II Listed Building
- First Floor Apartment
- Two Double Bedrooms
- Open Plan Kitchen
- Integrated Storage Space
- Allocated Secure Parking

Lower Square, Old Isleworth, TW7



Total area (approx.): 65.5 sq. m (705.0 sq. ft)