



Finchley Road, NW11

£550,000

A spacious two bedroom apartment located on the sixth floor (with a lift) of this modern development with a large balcony. The property has two bathrooms and will be sold with no onward chain

Close to Golders Green tube, Cricklewood, Thameslink and a number of bus routes on the doorstep. There is also the open spaces of Hampstead Heath and Golders Hill Park close by.

Features

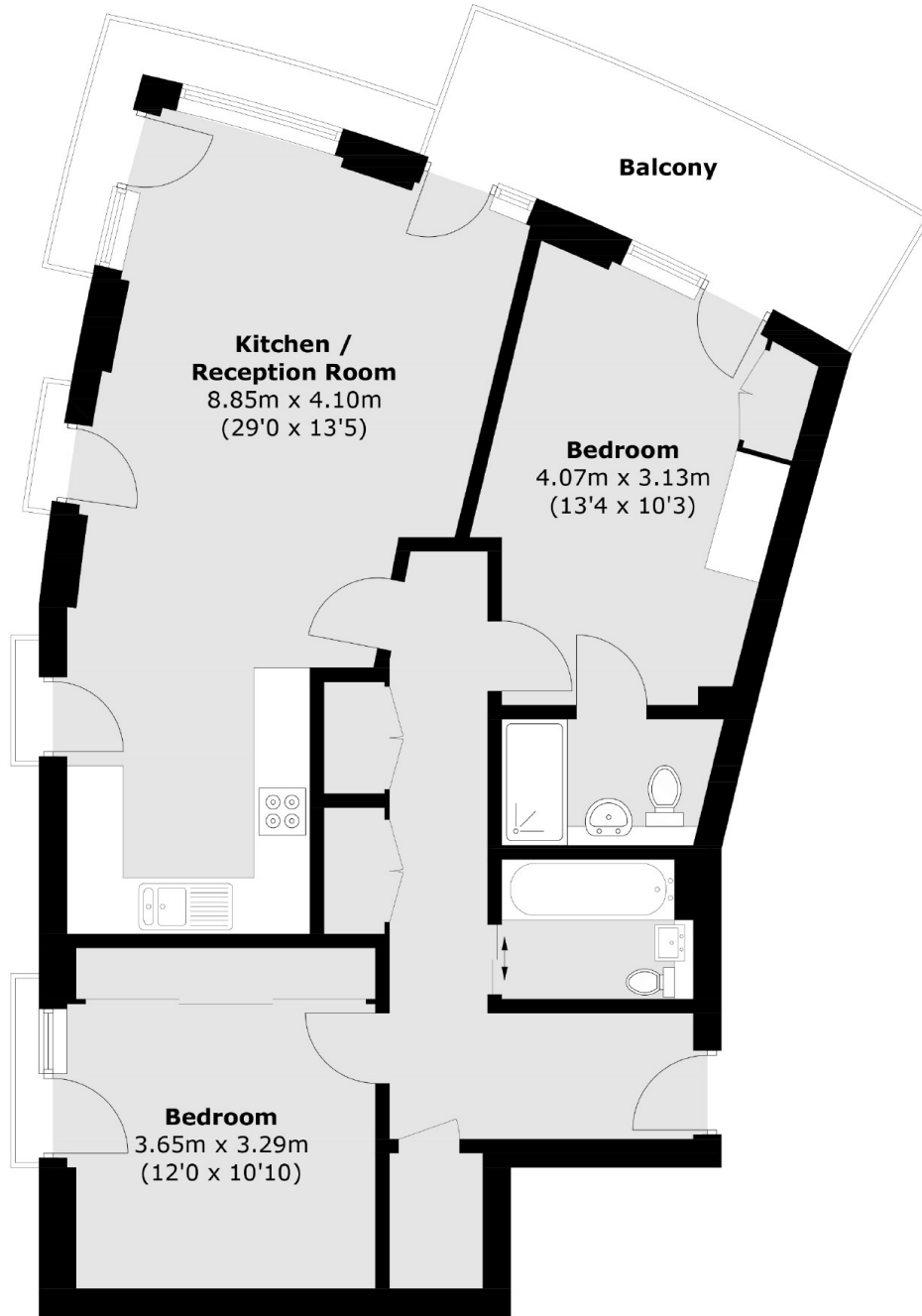
- Two Bedrooms
- Lift
- Two Bathrooms
- Terrace
- No Onward Chain
- Underground Parking



Finchley Road, NW11



Finchley Road, London, NW11



Sixth Floor

Total area (approx.): 78.4 sq. m (843.9 sq. ft)