



## Lockton Close, Manchester, M1

Offers Over £240,000

3 1



Fantastic transport links such as Metrolink, train & bus links are only a short stroll away.

A superb buy, the property comprises of : Second floor private entrance , fitted kitchen, spacious living room with balcony which bathes the space in light, stairs to first floor landing, three generous sized bedrooms and a family sized bathroom with three piece suite in white with shower over the bath.

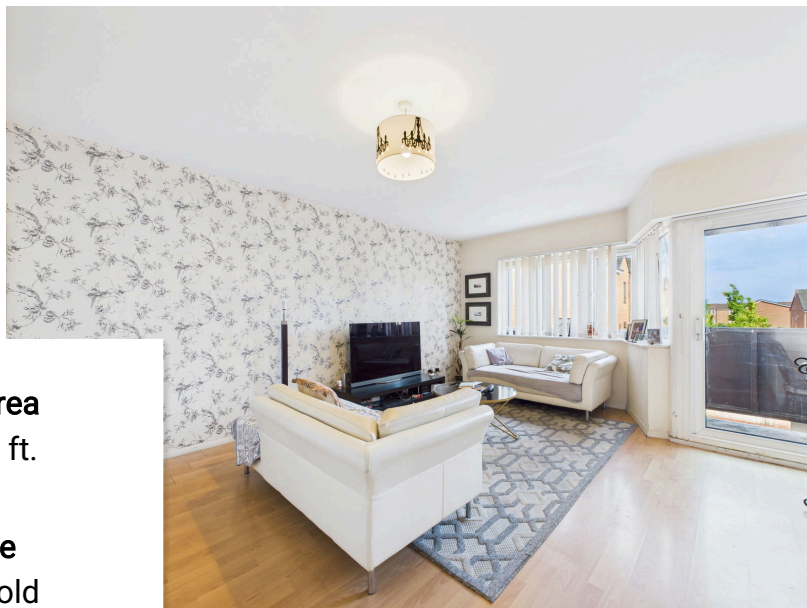
Currently sold with no chain.

The property is fully UPVC double glazed and further complimented by gas central heating.

Externally parking is available by registration with the council for resident permit parking.







**Floor Area**  
936 sq. ft.

**Tenure**  
Leasehold

**Service Charge**  
£2000 per annum

**Ground Rent**  
£10 per annum



**UK Offices** | Canary Wharf - E14    Nine Elms - SE1    Royal Docks - E16    Bow - E3    Hayes, Middlesex - UB3    Manchester - M2  
**International Offices** | Dublin    Abu Dhabi    Hong Kong    Singapore

