



ALISON MCCAREY POWERED BY exp TM UK

@ alison.mccarey@exp.uk.com

alisonmccarey.exp.uk.com

07506 730 460

King Edward VII Apartments, Kings Drive, Midhurst

Guide Price £465,000

2 2

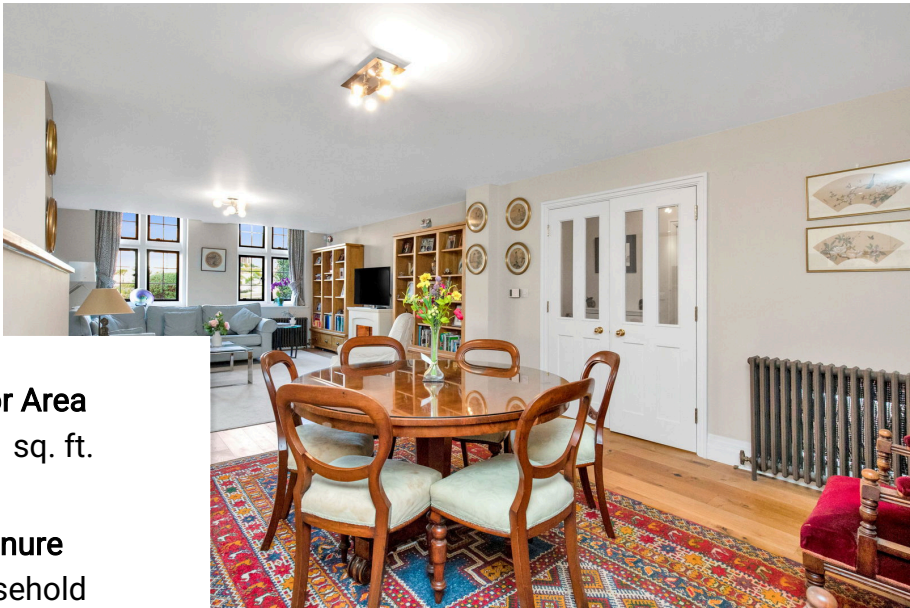


A spacious and light filled two bedroom ground floor apartment with open plan living dining area and two luxury tiled bathrooms. Located in the main building not far from the main entrance you have easy access to the residents luxurious lounges and the beautiful restored Edwardian Gardens. This spacious apartment has a modern kitchen with premium integrated appliances, quartz worktops and a handy storage and utility room. Living on this country estate offers truly modern living within an area of outstanding natural beauty and yet is situated just over one hour from London.

The property comes with two allocated car parking spaces in the secure underground car park, use of on-site indoor heated pool, steam room and gym. Dogs are welcome at the estate with 165 acres of woodland walks and superb communal gardens. Nearby Cowdray estate offers Golf and a Farmshop & Cafe.

Quote AM0249 for viewing appointments with you local



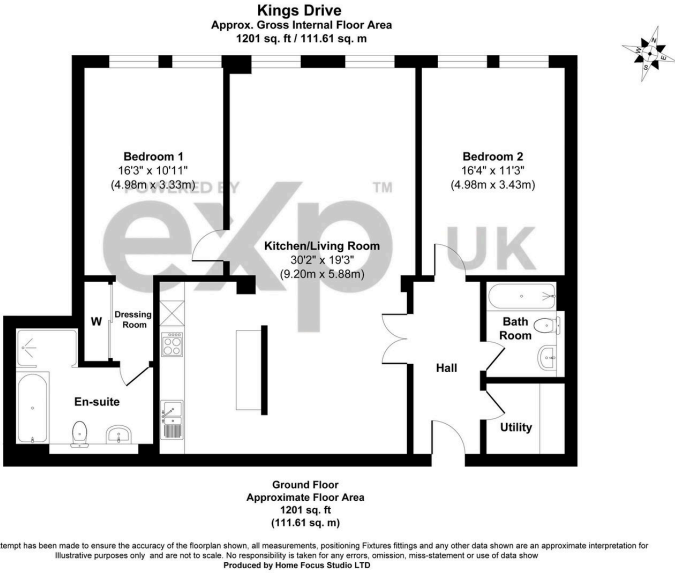


Floor Area
1201 sq. ft.

Tenure
Leasehold

Service Charge
£6122.22 per annum

Ground Rent
£250 per annum



Score	Energy rating	Current	Potential
92+	A		
81-91	B	82 B	86 B
69-80	C		
55-68	D		
39-54	E		
21-38	F		
1-20	G		

The graph shows this property's current and potential energy rating.