



Stoneacre  
Properties



## Fulneck Court

Pudsey, LS28 8SB

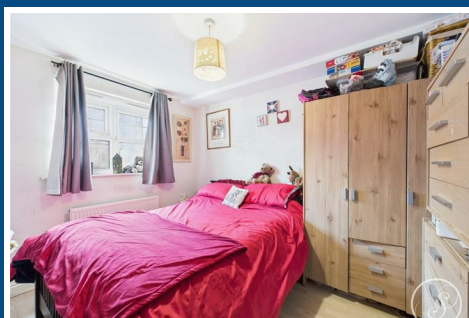
£124,000



# Fulneck Court

Pudsey, LS28 8SB

£124,000



## Entrance

Entering the apartment you are welcomed into the hallway which offers access throughout the flat. Laminate flooring runs from the hallway throughout the apartment.

## Lounge

Large spacious and naturally bright formal lounge offers ample space for seating as well as French doors out to the communal grounds.

## Kitchen

Modern kitchen is made up of wall and base units and comprises integrated fridge/freezer, oven, gas hob with extractor above, sink with drainer, plumbing for washing machine and ample storage. There is also space for a dining table.

## Bedroom 1

Large primary bedroom with space for wardrobe and drawer storage. Access is offered to the bathroom, although this door is not currently used.

## Bedroom 2

Second bedroom also ideal as a home office.

## Bathroom

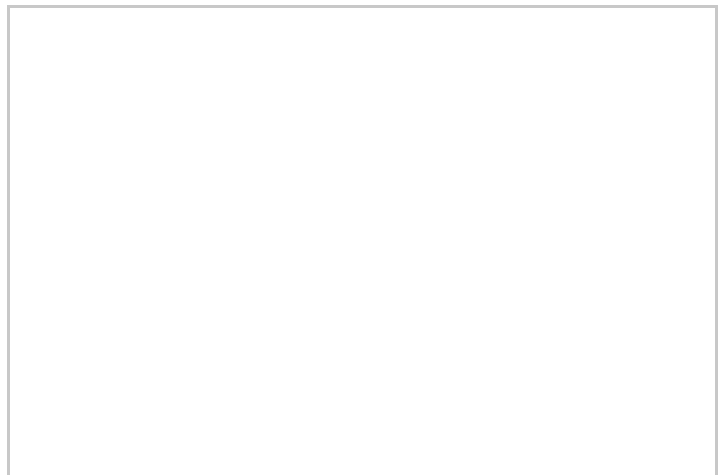
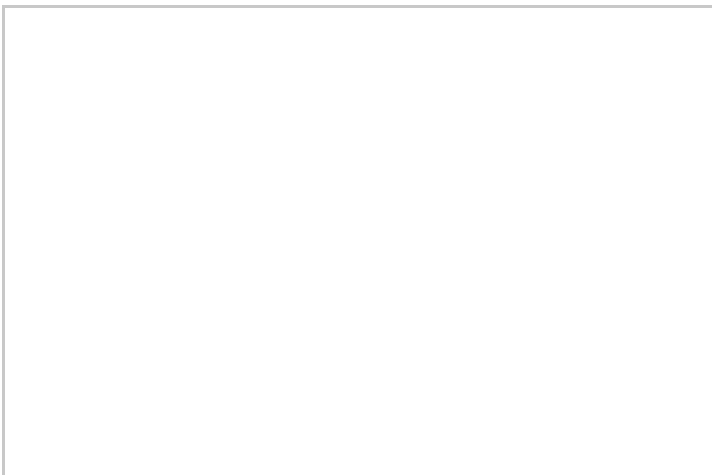
Part tiled bathroom with shower over bath, toilet and sink. The bathroom can be accessed from the hallway and bedroom 1.

## External

Externally, the property boasts well maintained grounds and the apartment comes complete with an allocated parking space.

## Lease

We are advised by the vendor that the property is leasehold with an original term of 999 years from 2004. The current service charge is approximately £153.09 per month and the ground rent is £100 per annum. A buyer is advised to obtain verification from their solicitor or legal advisor.



## Road Map



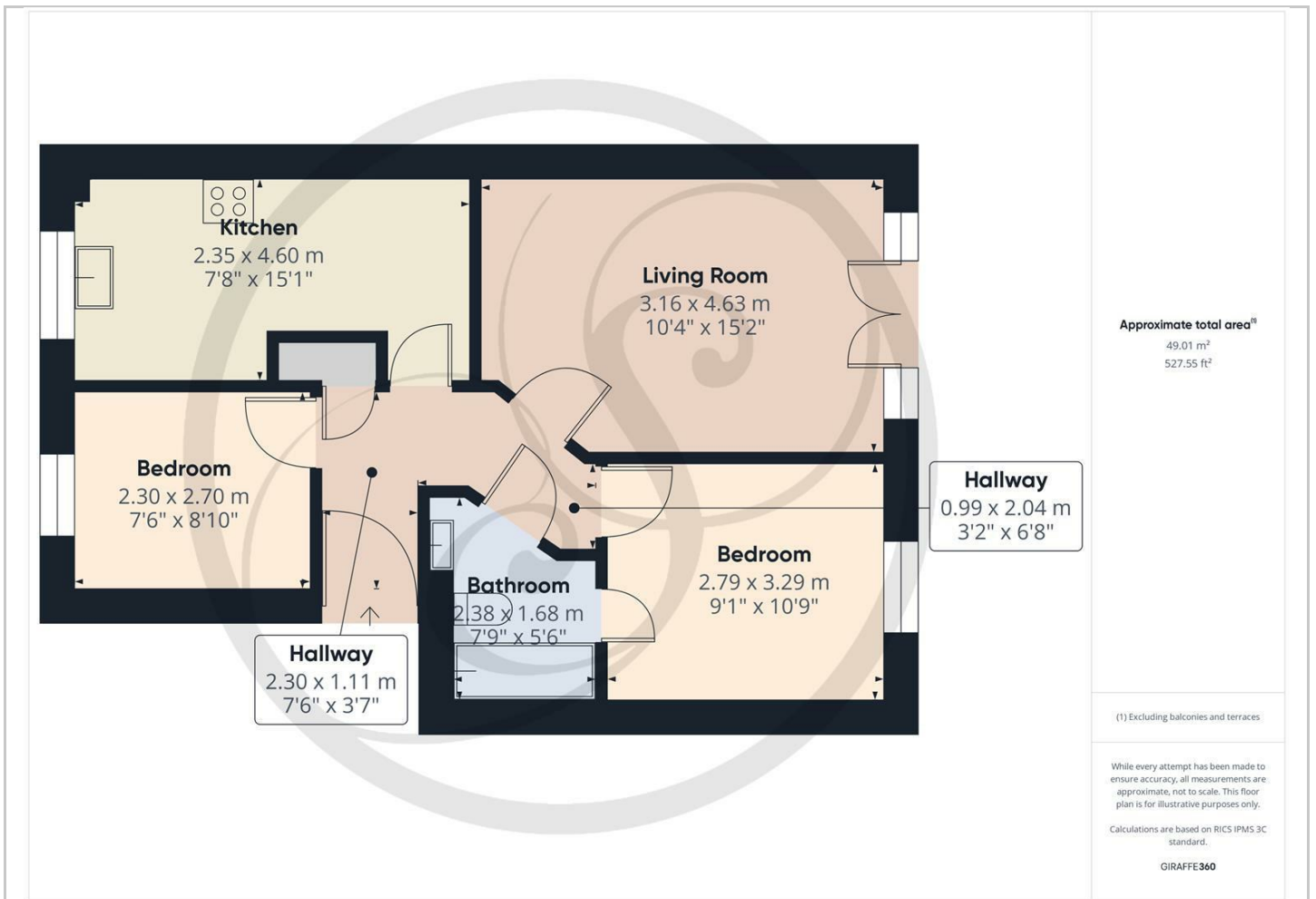
## Hybrid Map



## Terrain Map



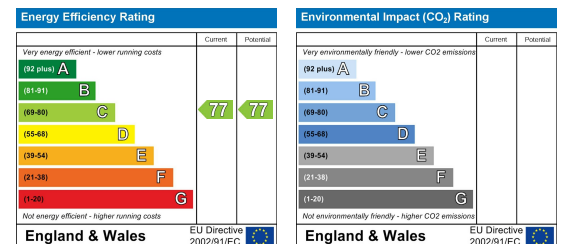
## Floor Plan



## Viewing

Please contact our Chapel Allerton Sales Office on 0113 237 0999 if you wish to arrange a viewing appointment for this property or require further information.

## Energy Efficiency Graph



These particulars, whilst believed to be accurate are set out as a general outline only for guidance and do not constitute any part of an offer or contract. Intending purchasers should not rely on them as statements of representation of fact, but must satisfy themselves by inspection or otherwise as to their accuracy. No person in this firm's employment has the authority to make or give any representation or warranty in respect of the property.