



NO.99 SEAGRAVE ROAD, SILEBY, LOUGHBOROUGH

GUIDE PRICE: £ 490,000



Nestled in the heart of Sileby village, ideally positioned between Loughborough and Leicester, this beautifully extended detached chalet bungalow blends character charm with modern family living. Behind its modest façade lies a surprisingly spacious home, thoughtfully upgraded and designed for comfort and versatility. Featuring four/ five bedrooms across two floors, an impressive open-plan kitchen and living space, and a private, sun-soaked rear garden with multiple seating areas, this property perfectly suits both growing families and those seeking flexible accommodation. With excellent local amenities, a nearby train station, and convenient road links, it delivers the ideal balance of village life and commuter convenience.



Stepping inside, a solid oak door opens to a welcoming hallway that sets the tone for the home's warmth and character, featuring a mix of traditional detailing and contemporary style. The ground floor hosts three generous double bedrooms, each bright and well-proportioned, complemented by a sleek, fully tiled shower room with a modern white suite and chrome fixtures. To the rear, the extension creates a striking open-plan lounge and dining area—a versatile, light-filled hub with a large skylight, elegant wall panelling, and French doors opening onto the garden.







The adjoining kitchen-diner continues the theme of quality and space, showcasing an extensive range of fitted units, integrated appliances, and a central island with breakfast bar. Designed for both everyday family life and entertaining, this room enjoys abundant natural light through dual aspect windows and patio doors leading directly to the garden.





Upstairs, the home offers two further bedrooms and a stylish family bathroom. The principal bedroom is a generous retreat featuring exposed timber beams, a skylight, and charming views, while the additional room—currently used as a dressing room—would also make for an excellent study or creche . The upstairs bathroom is tastefully appointed, complete with a shower-over-bath, tiled surrounds, and a heated towel rail, continuing the home's cohesive, modern finish.





Outside, the landscaped rear garden is a private oasis with two tiled patio areas, artificial lawns framed by sleeper borders, and a timber pergola with seating and firepit—perfect for summer evenings. A solid timber workshop adds practicality, while the gated driveway to the front provides ample off-road parking bordered by reclaimed brickwork, wall lighting, and mature planting.



Lovingly enhanced to combine 1920s character with modern luxury, this outstanding Sileby home—offered by REZIDE—represents a rare opportunity to enjoy generous, stylish living in a highly sought-after village location.

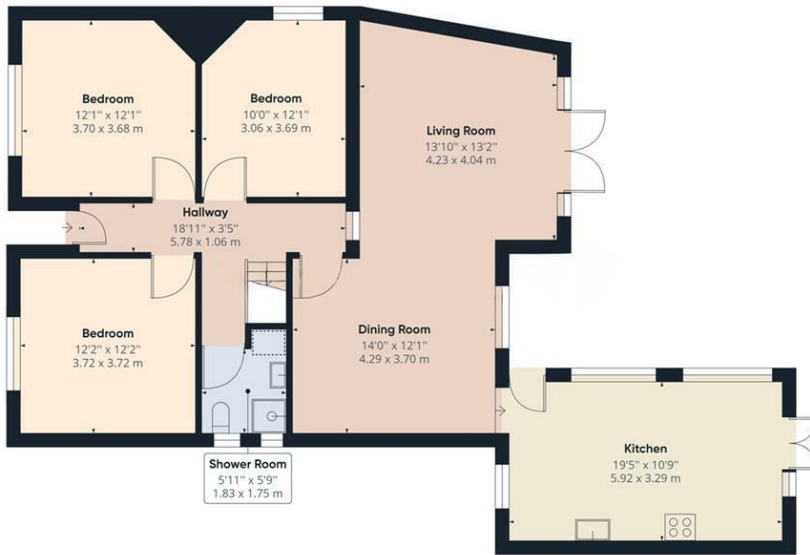






KEY FEATURES:

- EXTENDED 4/5 BEDROOM PROPERTY
- MODERN FINISH THROUGHOUT
- EXCELLENT FOR ENTERTAINING
- LANDSCAPED REAR GARDEN
- FOUR DOUBLE BEDROOMS + DRESSING ROOM
- OFF ROAD PARKING



Ground Floor

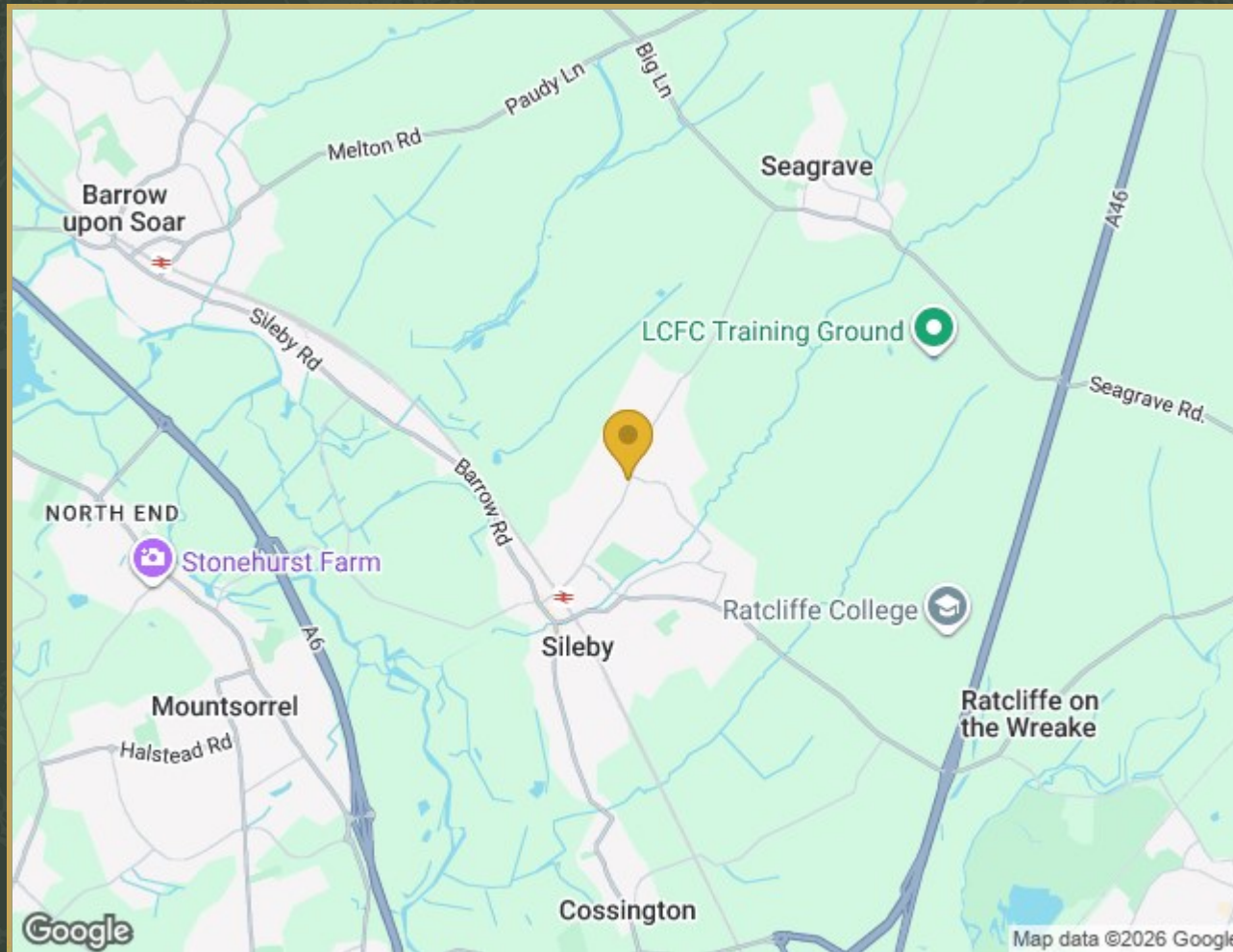


Floor 1



Energy Efficiency Rating		Environmental Impact (CO ₂) Rating			
	Current	Potential		Current	Potential
Very energy efficient - lower running costs				Very environmentally friendly - lower CO ₂ emissions	
(92 plus) A				(92 plus) A	
(81-91) B				(81-91) B	
(69-80) C				(69-80) C	
(55-68) D				(55-68) D	
(39-54) E				(39-54) E	
(21-38) F				(21-38) F	
(1-20) G				(1-20) G	
Not energy efficient - higher running costs				Not environmentally friendly - higher CO ₂ emissions	
England & Wales		EU Directive 2002/91/EC		England & Wales	

Property Location



99 Seagrave Road, Sileby, Loughborough, LE12 7TW

MEET YOUR *Local Agents*



As a family-run business with over 20 years of experience in the property industry, we pride ourselves in bringing a personal touch to every property journey. Our tailored approach is designed to meet your unique needs, whether you are looking to buy, sell, or explore discreet marketing options.

With exclusive access to properties through our Buyer's Club and a commitment to providing confidential sales for premium homes, we offer services that go beyond the ordinary.