

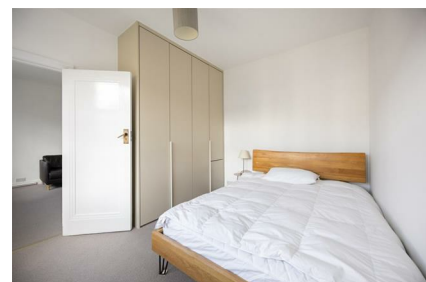
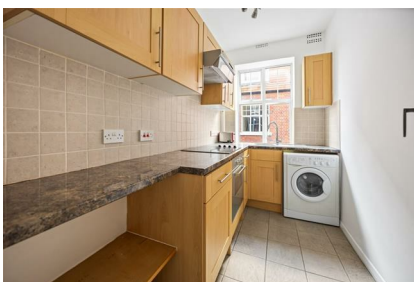
# Parkheath

*Sold on Service*

---

## Belsize Grove NW3

**£2,000 PCM (£462 per week) - Camden Band D**

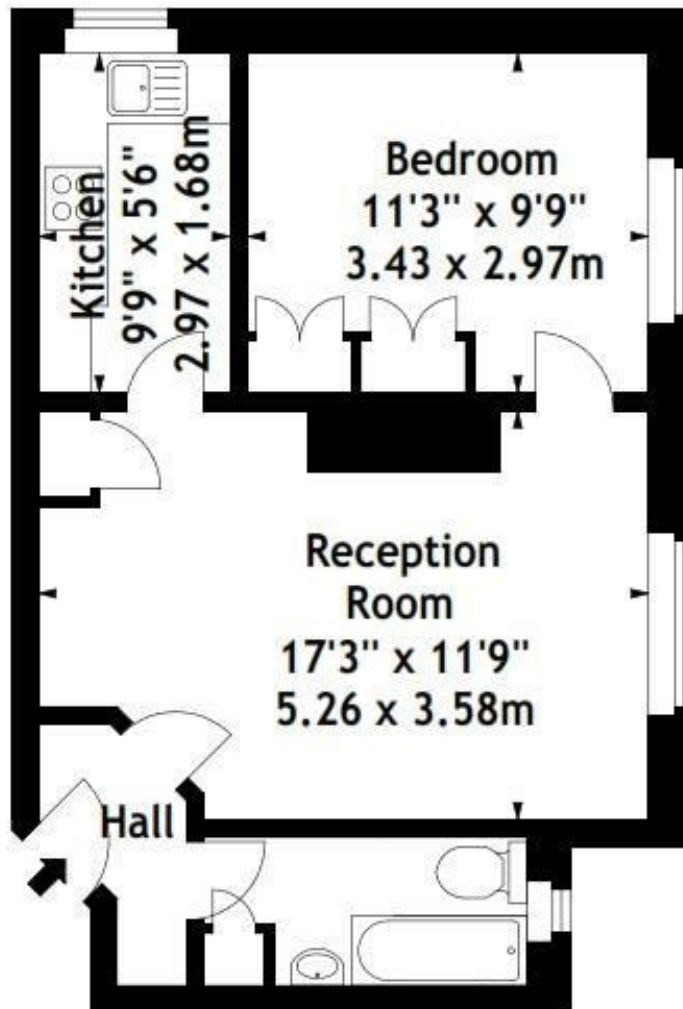


Bright and well presented 1 bedroom apartment  
Lift, communal gardens and porter  
Modern kitchen with washing machine  
3 piece bathroom  
Moment to Belsize Park tube

2nd floor in purpose built block  
Reception with garden views  
Double bedroom  
Communal heating and hot water  
EPC: Rating C, Council Tax: Camden band D

Belsize Park Office 020 7431 3104

Holmefield Court,  
Belsize Grove, NW3  
Approx. Gross Internal Area  
443 Sq Ft - 41.15 Sq M



## Second Floor

Measured in accordance with RICS guidelines. Every attempt is made to ensure accuracy, however all measurements are approximate.

This floor plan is for illustrative purposes only and is not to scale.

© Datography Ltd 2016

Photographs \* Floorplans \* Virtual Tours

Tel: 0845 643 4401 [www.datography.com](http://www.datography.com)

The particulars do not constitute part of an offer or contract. The particulars, including text, photographs and plans, are for the guidance only of prospective purchasers/tenants and must not be relied upon as statements of fact. The descriptions provided therein represent the opinion of the author and whilst given in good faith should not be construed as statements of fact. Nothing in these particulars shall be deemed a statement that the property is in good condition or otherwise or that any services or facilities are in good working order. All measurements are approximate