



62 Addison Drive, Stratford-Upon-Avon

Offers in Region of **£175,000**

62 Addison Drive

Stratford-Upon-Avon, Stratford-Upon-Avon

Spacious two bedroom flat with open plan living, modern kitchen, en-suite, extra bathroom, gas heating, double glazing, secure entry, and allocated parking in a convenient location.

Council Tax band: C

Tenure: Leasehold

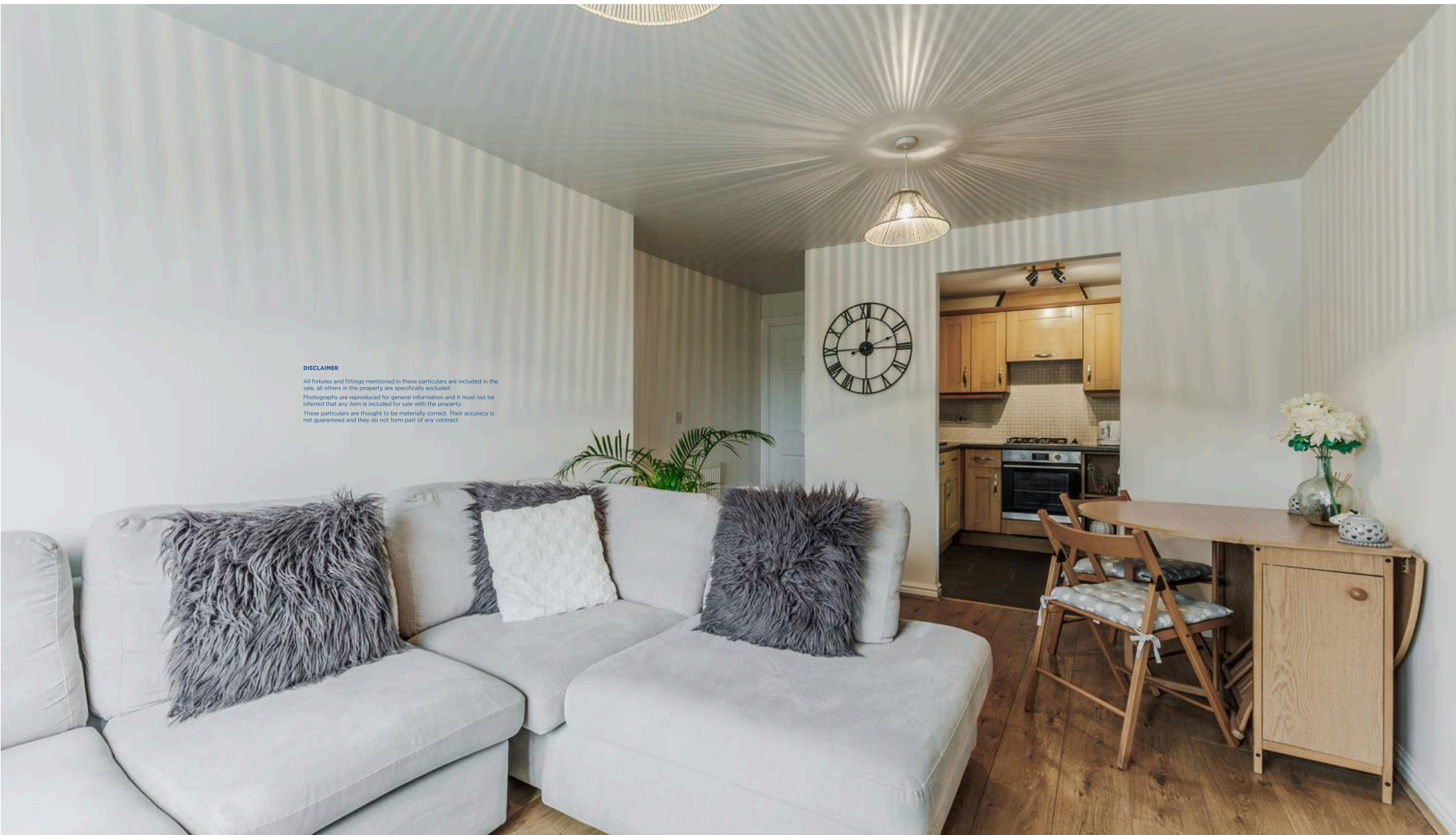
EPC Energy Efficiency Rating:

EPC Environmental Impact Rating:

- Popular Cul-de-Sac Location Close To Town Centre
- Two Bedroom First Floor Apartment
- Ideal First Time Purchase Or Investment
- Open Plan Lounge Diner
- En-Suite To Main Bedroom
- Further Bathroom
- Gas Central Heating
- Allocated Parking With Further Visitor Spaces
- EPC Rating B
- No Onward Chain







DISCLAIMER

All fixtures and fittings mentioned in these particulars are included in the sale, all others in the property are specifically excluded.
Photographs are reproduced for general information and it must not be inferred that any item is included for sale with the property.
These particulars are thought to be materially correct. Their accuracy is not guaranteed and they do not form part of any contract.

Sheldon Bosley Knight Evesham & Pershore

Sheldon Bosley Knight, 1 Bridge Street, Evesham - WR11 4SQ

01386444900 · eveshamsales@sheldonbosleyknight.co.uk · www.sheldonbosleyknight.co.uk/

DISCLAIMER

All fixtures and fittings mentioned in these particulars are included in the sale, all others in the property are specifically excluded.

Photographs are reproduced for general information and it must not be inferred that any item is included for sale with the property.

These particulars are thought to be materially correct. Their accuracy is not guaranteed and they do not form part of any contract.