



Elf Row, E1W

£3,600 Per month

 4  1  2  C

- Four Bedrooms House
- Two Bathrooms
- Fitted Kitchen Diner

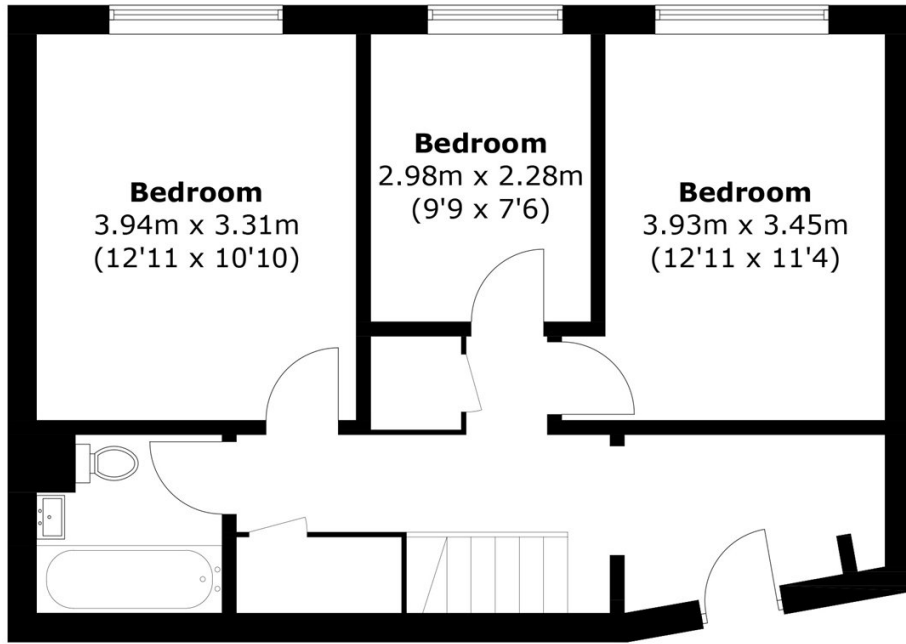
- Private Garden
- Wapping Location
- Close to Station



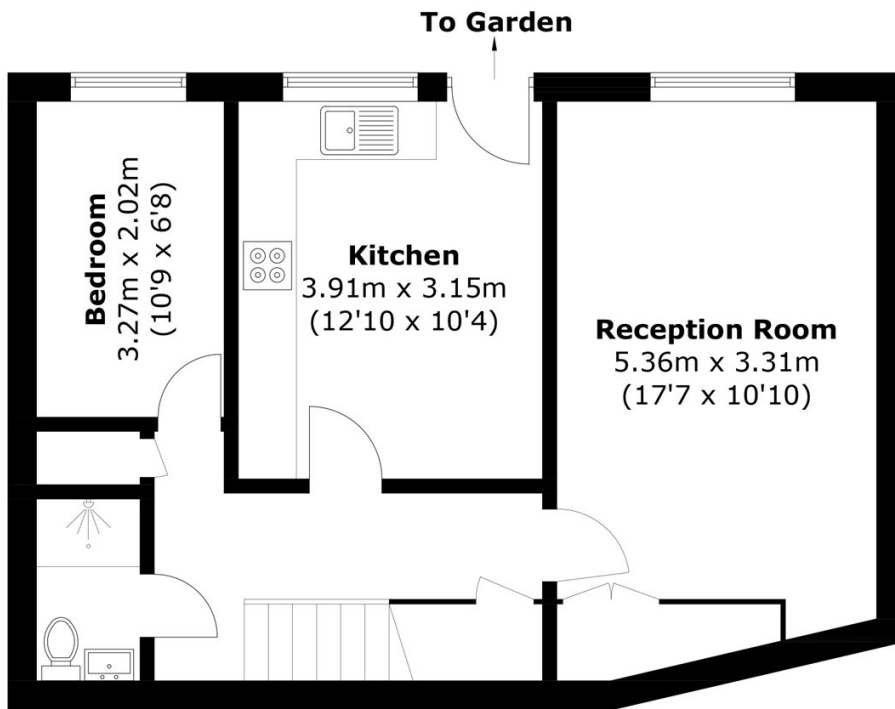
Spacious four bedroom house with a garden located in this quiet cul de sac in Wapping. This home would suit for a growing family or sharers and offers two bathrooms, a spacious reception, a separate fitted kitchen and a private garden, ideal for dinner parties and entertaining.

Conveniently located close to Limehouse and Shadwell stations, and local bus routes providing an easy access to the City, London Bridge, Canary Wharf & Shoreditch. Walking distance from Wapping Saturday market and St Katharine's Docks with a wide selection of pubs, bars, restaurants and cafés nearby. Just a short walk to the King Edward Memorial Park and the River Thames.





Ground Floor



Lower Ground Floor

Total area: Approx. 103.6 sq. meters (1,115.2 sq. feet)

35A Wapping High Street,
 London, E1W 1NR
 020 7702 3456
 ea2group.com



Energy Rating: C We aim to make our particulars both accurate and reliable. However they are not guaranteed; nor do they form part of an offer or contract. If you require clarification on any points then please contact us, especially if you're travelling some distance to view. Please note that appliances and heating systems have not been tested and therefore no warranties can be given as to their good working order.